

LOC I-PMD <b>110.7</b>	APP CRS <b>254°</b>	Rwy Idg TDZE Apt Elev	<b>12002</b> <b>2503</b> <b>2543</b>
---------------------------	------------------------	-----------------------------	--

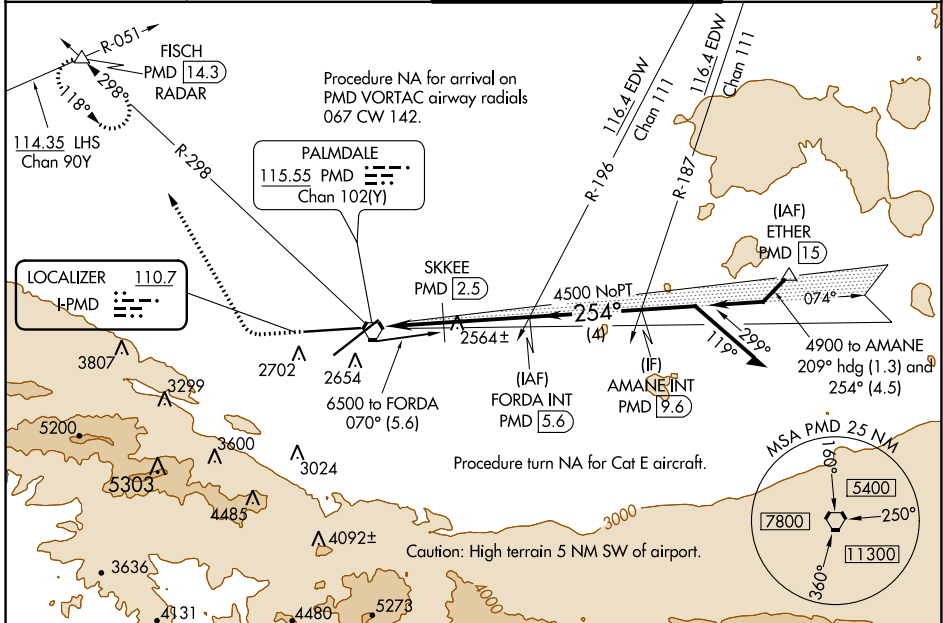
# ILS or LOC RWY 25

PALMDALE USAF PLANT 42 (PMD)

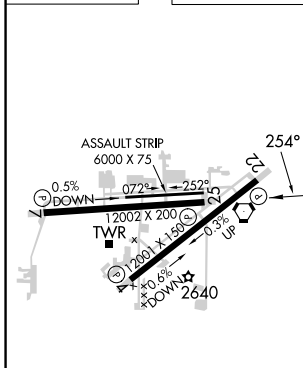
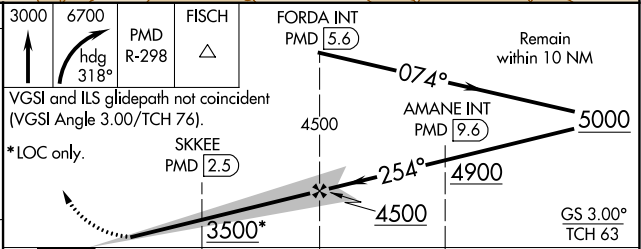
**▽** DME from PMD VORTAC.  
**△** Simultaneous reception of I-PMD and PMD DME required.  
 Circling NA for Cats C, D, and E south of Rwy 4 and 25.

MISSED APPROACH: Climb to 3000 then climbing right turn to 6700 on heading 318° and on PMD VORTAC R-298 to FISCH INT/PMD 14.3 DME/RADAR and hold, continue climb-in-hold to 6700.

ATIS <b>118.275</b>	JOSHUA APP CON <b>124.55 363.0</b>	<b>PALMDALE TOWER *</b> <b>123.7 (CTAF) 0 317.6</b>	GND CON <b>121.9 317.6</b>
------------------------	---------------------------------------	--	-------------------------------



ELEV 2543	TDZE 2503
-----------	-----------



REIL Rwy 4, 7, 22 and 25  
 HIRL Rwy 4-22 and 7-25

FAF to MAP 6.1 NM

Knots	60	90	120	150	180
Min:Sec	6:06	4:04	3:03	2:26	2:02

CATEGORY	A	B	C	D	E
S-ILS 25	2703- <sup>3</sup> / <sub>4</sub> 200 (200- <sup>3</sup> / <sub>4</sub> )				
S-LOC 25	3500-1 <sup>1</sup> / <sub>4</sub> 997 (1000-1 <sup>1</sup> / <sub>4</sub> )	3500-1 <sup>1</sup> / <sub>2</sub> 997 (1000-1 <sup>1</sup> / <sub>2</sub> )	3500-3 997 (1000-3)		
<b>C</b> CIRCLING	3500-1 <sup>1</sup> / <sub>4</sub> 957 (1000-1 <sup>1</sup> / <sub>4</sub> )	3500-1 <sup>1</sup> / <sub>2</sub> 957 (1000-1 <sup>1</sup> / <sub>2</sub> )	3500-3 957 (1000-3)	3740-3 1197 (1200-3)	3760-3 217 (1300-3)
SKKEE FIX MINIMUMS (DME REQUIRED)					
S-LOC 25	2820-1 317 (300-1)		2820- <sup>7</sup> / <sub>8</sub> 317 (300- <sup>7</sup> / <sub>8</sub> )		
<b>C</b> CIRCLING	3020-1 477 (500-1)	3060-1 517 (600-1)	3140-1 <sup>1</sup> / <sub>2</sub> 597 (600-1 <sup>1</sup> / <sub>2</sub> )	3740-3 1197 (1200-3)	3760-3 217 (1300-3)

SW-3, 11 JUL 2024 to 08 AUG 2024

SW-3, 11 JUL 2024 to 08 AUG 2024