

WAAS CH <b>86520</b> <b>W25A</b>	APP CRS <b>254°</b>	Rwy Idg TDZE Apt Elev	<b>12002</b> <b>2503</b> <b>2543</b>
--	------------------------	-----------------------------	--

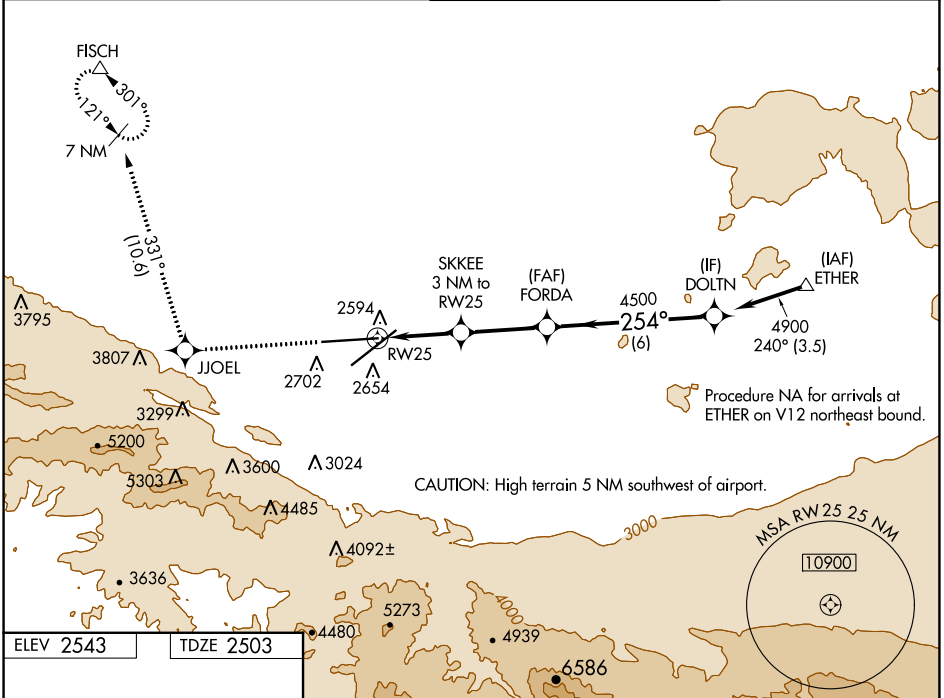
# RNAV (GPS) RWY 25

PALMDALE USAF PLANT 42 (PMD)

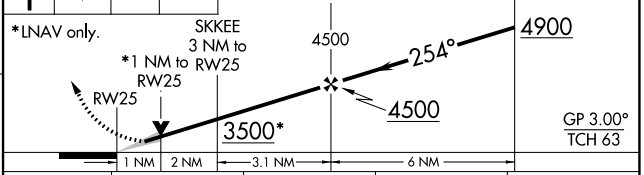
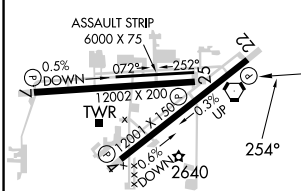
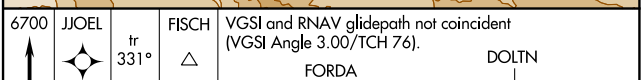
**⚠** For uncompensated Baro-VNAV systems, LNAV/VNAV NA below -6°C (22°F) or above 50°C (123°F). Circling NA for Cats C and D south of Rwy 4 and 25.  
DME/DME RNP-0.3 NA.

**MISSED APPROACH:** Climb 6700 direct JJOEL and on track 331° direct FISCH and hold, continue climb-in-hold to 6700.

ATIS <b>118.275</b>	JOSHUA APP CON <b>124.55 363.0</b>	PALMDALE TOWER * <b>123.7 (CTAF) 317.6</b>	GND CON <b>121.9 317.6</b>
------------------------	---------------------------------------	---	-------------------------------



ELEV 2543	TDZE 2503
-----------	-----------



CATEGORY	A	B	C	D
LPV DA		2703-3/4	200 (200-3/4)	
LNAV/VNAV DA		2806-1	303 (300-1)	
LNAV MDA		2880-1	377 (400-1)	
<b>CIRCLING</b>	3020-1 477 (500-1)	3060-1 517 (600-1)	3140-1½ 597 (600-1½)	3740-3 1197 (1200-3)

REIL Rwy 4, 7, 22 and 25  
HIRL Rwy 4-22 and 7-25

SW-3, 11 JUL 2024 to 08 AUG 2024

SW-3, 11 JUL 2024 to 08 AUG 2024