

WAAS CH 53441 W07A	APP CRS 077°	Rwy ldg 12002 TDZE 2540 Apt Elev 2543
--	------------------------	--

RNAV (GPS) RWY 7

PALMDALE USAF PLANT 42 (PMD)

RNP APCH.
 Circling NA for Cats C and D south of Rwy 4 and 25.

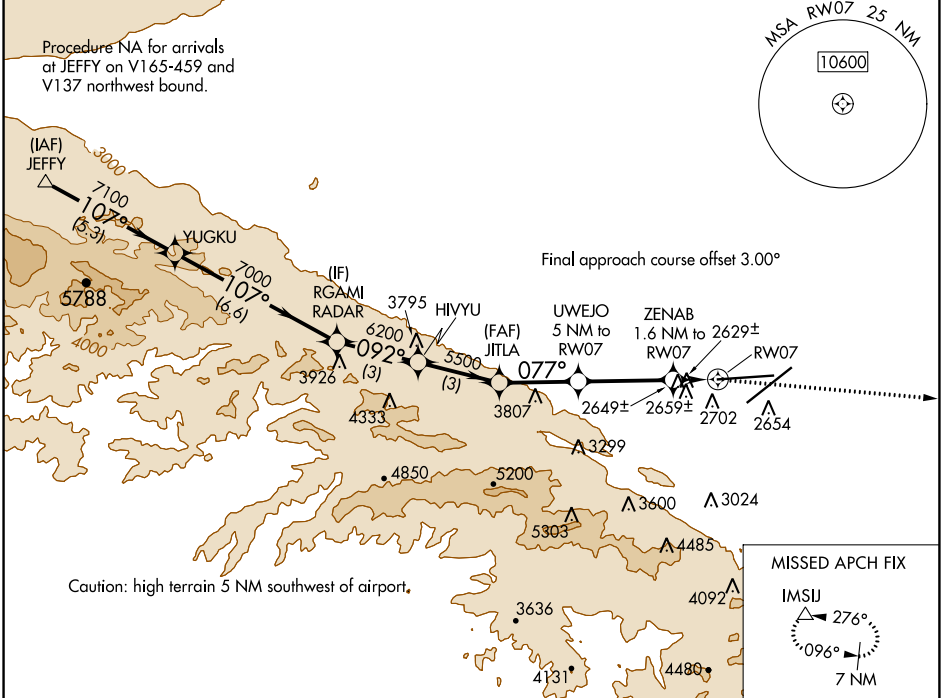
MISSED APPROACH: Climbing right turn to 7000 direct IMSJ and hold.

ATIS
118.275

JOSHUA APP CON
124.55 363.0

PALMDALE TOWER *
123.7 (CTAF) 0 317.6

GND CON
121.9 317.6



SW-3, 11 JUL 2024 to 08 AUG 2024

SW-3, 11 JUL 2024 to 08 AUG 2024

JEFFY	YUGKU	RGAMI	HIVYU	JITLA	UWEJO	ZENAB	IMSJ
8000	7100	7000	6200	5500	4440	3180	7000
-5.3 NM		-6.6 NM		3 NM	3 NM	2.8 NM	3.4 NM
				-0.8 NM			-0.8 NM

VGSI and descent angles not coincident (VGSI Angle 3.00/TCH 78).

077°

0.8 NM to RW07

3.50° TCH 50

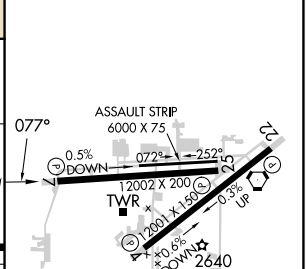
5 NM to RW07

1.6 NM to RW07

0.92°

077°

ELEV 2543	TDZE 2540
-----------	-----------



CATEGORY	A	B	C	D
LP MDA	2880-1 340 (400-1)			
LNAV MDA	2920-1 380 (400-1)			
CIRCLING	3020-1 477 (500-1)	3060-1 517 (600-1)	3140-1½ 597 (600-1½)	3740-3 1197 (1200-3)

REIL Rwy 4, 7, 22 and 25

HIRL Rwy 4-22 and 7-25