

PANAMA CITY, FLORIDA

RNAV (GPS) RWY 32L

WAAS CH 71279 W32B	APCH CRS 319°	Rwy ldg TDZE Arpt Elev	9135 17 17
--	-------------------------	------------------------------	---------------------------------------

(USAF)

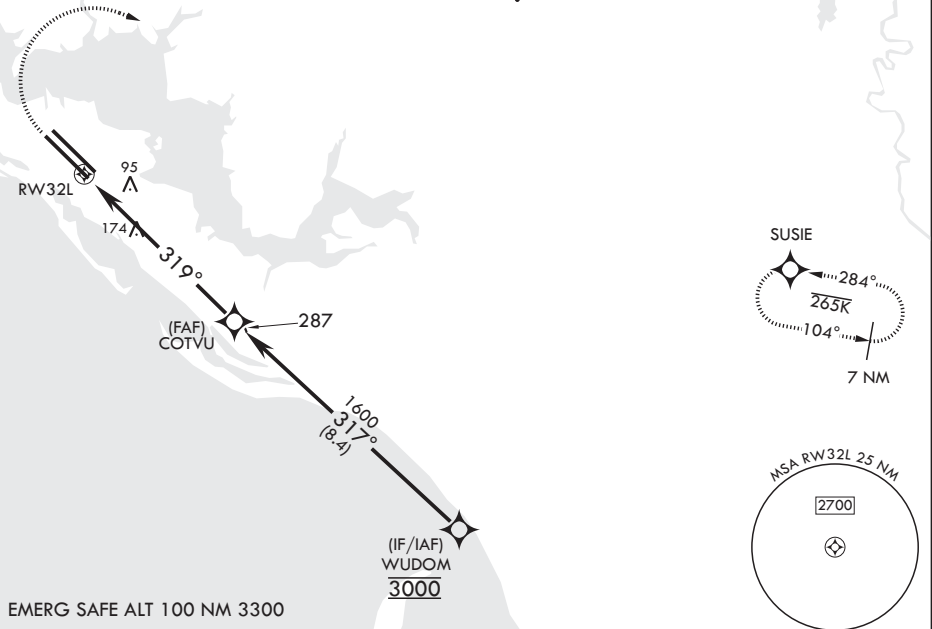
TYNDALL AFB (KPAM)

RNP APCH MISSED APPROACH: Climb to 600 then climbing right turn to 3000 direct SUSIE and hold.

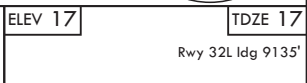
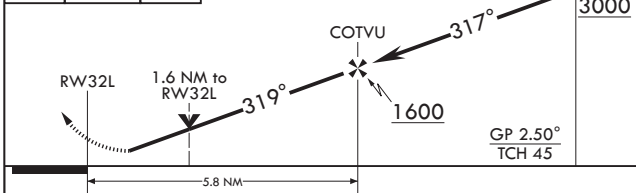
ATIS ★ 254.4	APP CON/DEP CON 119.775 317.45 BLW 5000' 124.15 338.35 ABV 5000'	TOWER ★ 133.95 263.15	GND CON 121.9 259.3	CLNC DEL 118.05 348.7	ASR/PAR
------------------------	--	---------------------------------	-------------------------------	---------------------------------	---------

For uncompensated Baro-VNAV systems, Procedure NA below 16°C (61°F) or above 54°C (130°F).
Average Cold Temperature based on standard -30.00°C ISA deviation.

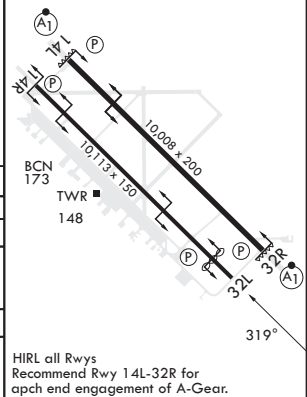
115



EMERG SAFE ALT 100 NM 3300



CATEGORY	A	B	C	D	E
LPV DA	217- ³ / ₄		200	(200- ³ / ₄)	
LNAV/VNAV DA	291- ⁷ / ₈ 274 (300- ⁷ / ₈)	302- ⁷ / ₈ 285 (300- ⁷ / ₈)	310- ⁷ / ₈ 293 (300- ⁷ / ₈)	321- ⁷ / ₈	304 (400- ⁷ / ₈)
LNAV MDA	480-1	463 (500-1)	480-1 ¹ / ₂	463	(500-1 ¹ / ₂)
CIRCLING	540-1	523 (600-1)	540-1 ¹ / ₂ 523 (600-1 ¹ / ₂)	580-2 563 (600-2)	620-2 ¹ / ₄ 603 (700-2 ¹ / ₄)



PANAMA CITY, FLORIDA

30°04'N - 85°34'W

TYNDALL AFB (KPAM)

Amdt 3 22APR21

RNAV (GPS) RWY 32L

SE-3, 11 JUL 2024 to 08 AUG 2024

SE-3, 11 JUL 2024 to 08 AUG 2024