

PATUXENT RIVER, MARYLAND

HI-TACAN Y RWY 14

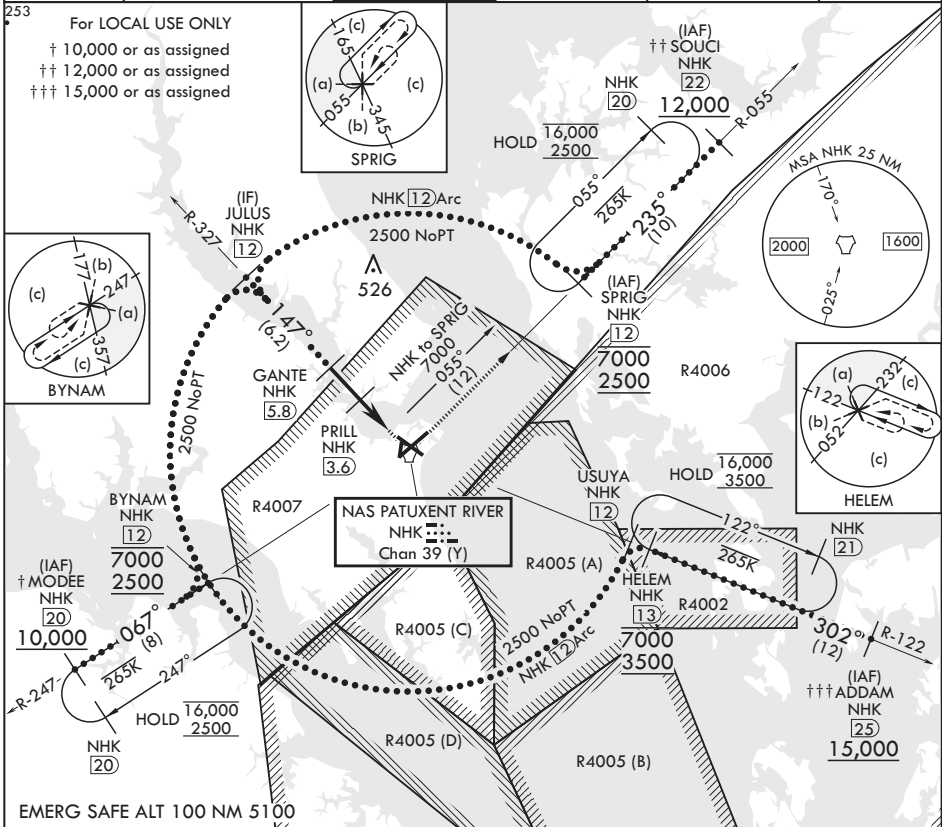
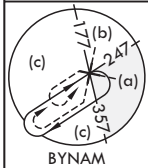
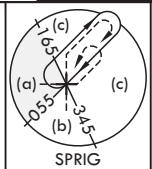
TACAN NHK Chan 39 (Y)	APCH CRS 147°	Rwy ldg TDZE 27	Arpt Elev 39
-----------------------	---------------	-----------------	--------------

- (USN) PATUXENT RIVER NAS (TRAPNELL FLD) (KNHK)

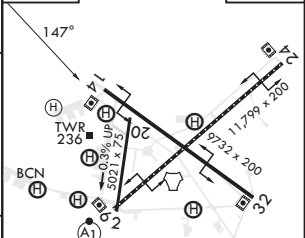
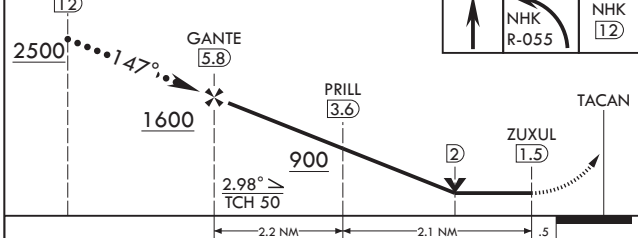
MISSED APPROACH: Climb to 500, then climbing left turn to 2500 on NHK TACAN R-055 to SPRIG and hold.

ATIS 322.425	APP CON/DEP CON 121.0 250.3	TOWER 123.7 343.65	GND CON 120.6 336.4	CLNC DEL 135.2 316.125	ASR/PAR
--------------	-----------------------------	--------------------	---------------------	------------------------	---------

253 For LOCAL USE ONLY
 † 10,000 or as assigned
 †† 12,000 or as assigned
 ††† 15,000 or as assigned



JULUS 12	500	2500	SPRIG NHK 12	ELEV 39	TDZE 27
----------	-----	------	--------------	---------	---------



CATEGORY	C	D	E
S-14	400-1	373	(400-1)
CIRCLING	620-1½ 581 (600-1½)	680-2 641 (700-2)	800-2¾ 761 (800-2¾)

HIRL Rwy 6-24, 14-32
 TDZL/CL Rwy 6

PATUXENT RIVER, MARYLAND

38°17'N - 76°25'W PATUXENT RIVER NAS (TRAPNELL FLD) (KNHK)

Orig 02DEC21

HI-TACAN Y RWY 14

NE-3, 11 JUL 2024 to 08 AUG 2024

NE-3, 11 JUL 2024 to 08 AUG 2024