

PATUXENT RIVER, MARYLAND

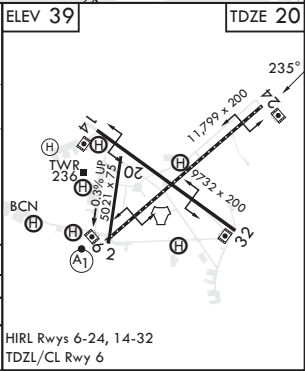
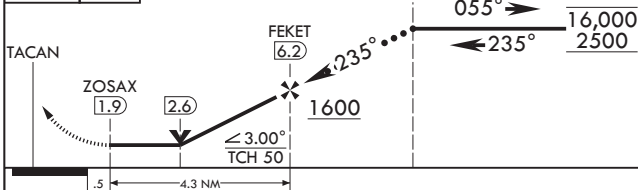
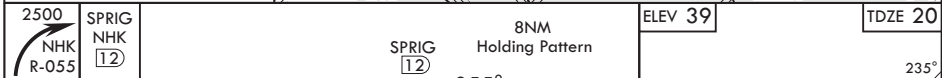
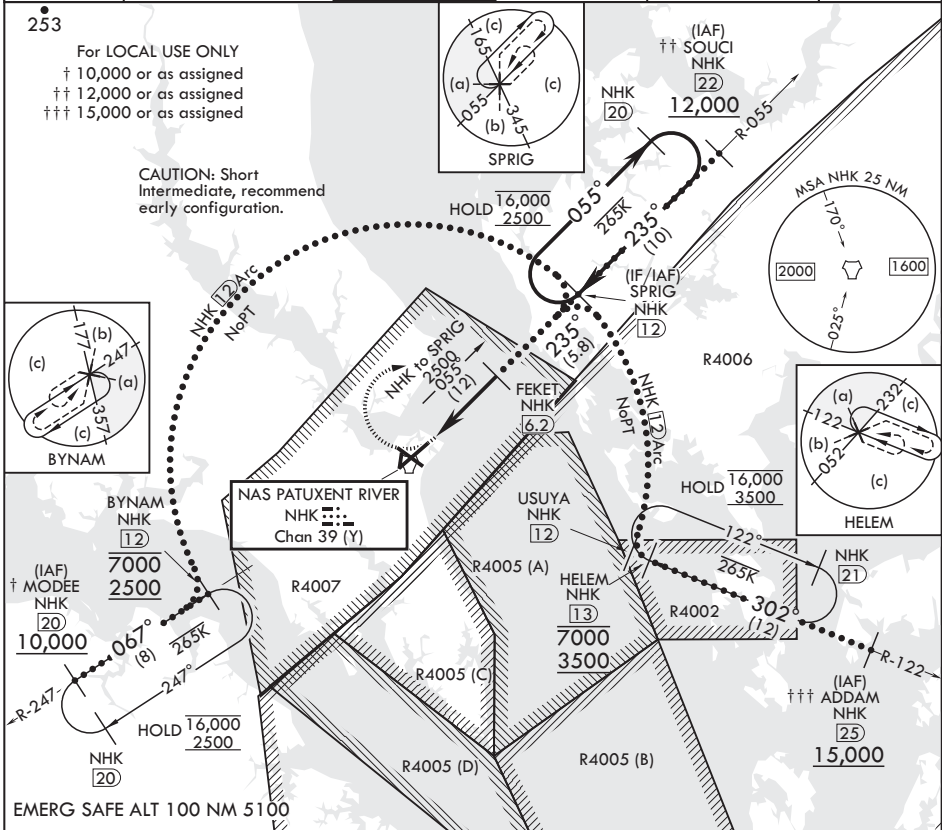
HI-TACAN Y RWY 24

TACAN NHK Chan 39 (Y)	APCH CRS 235°	Rwy ldg TDZE 20	11,799
		Arprt Elev 39	

(-USN) PATUXENT RIVER NAS (TRAPNELL FLD) (KNHK)

▽ MISSED APPROACH: Climbing right turn to 2500 and intercept NHK TACAN R-055 to SPRIG and hold.

ATIS 322.425	APP CON/DEP CON 121.0 250.3	TOWER 123.7 343.65	GND CON 120.6 336.4	CLNC DEL 135.2 316.125	ASR/PAR
--------------	-----------------------------	--------------------	---------------------	------------------------	---------



CATEGORY	C	D	E
S-24	440-1½	420	(500-1½)
C CIRCLING	620-1½ 581 (600-1½)	680-2 641 (700-2)	800-2¾ 761 (800-2¾)

HIRL Rwy 6-24, 14-32 TDZL/CL Rwy 6

PATUXENT RIVER, MARYLAND

38°17'N - 76°25'W PATUXENT RIVER NAS (TRAPNELL FLD) (KNHK)

Orig 02DEC21

HI-TACAN Y RWY 24

NE-3, 11 JUL 2024 to 08 AUG 2024

NE-3, 11 JUL 2024 to 08 AUG 2024