

PATUXENT RIVER, MARYLAND

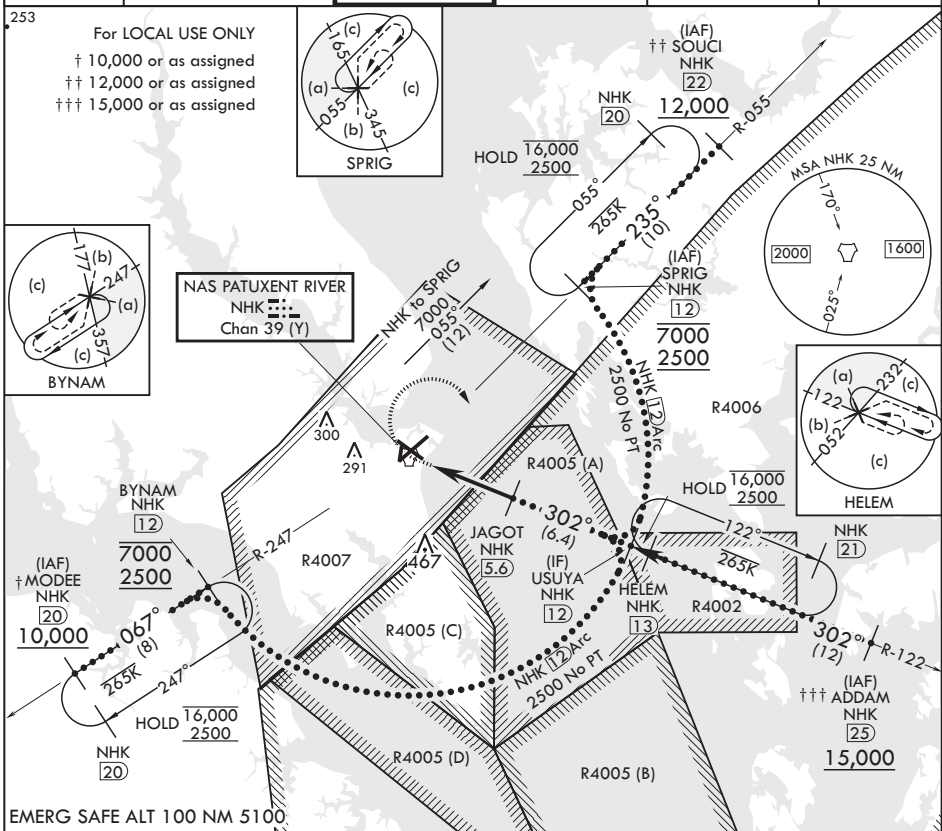
HI-TACAN Y RWY 32

TACAN NHK Chan 39 (Y)	APCH CRS 302°	Rwy ldg TDZE 18	9732
		Arprt Elev 39	

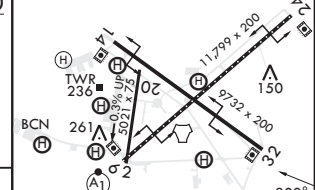
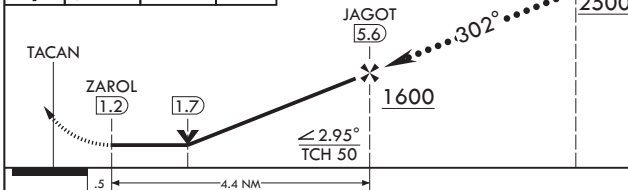
(-USN) PATUXENT RIVER NAS (TRAPNELL FLD) (KNHK)

MISSED APPROACH: Climb to 500, then climbing right turn to 2500 on NHK TACAN R-122 to HELEM and hold.

ATIS 322.425	APP CON/DEP CON 121.0 250.3	TOWER 123.7 343.65	GND CON 120.6 336.4	CLNC DEL 135.2 316.125	ASR/PAR
--------------	-----------------------------	--------------------	---------------------	------------------------	---------



500	2500	HELEM NHK 13	USUYA 12	ELEV 39	TDZE 18
-----	------	--------------	----------	---------	---------



CATEGORY	C	D	E
S-32	400-1½	382	(400-1½)
CIRCLING	620-1½ 581 (600-1½)	680-2 641 (700-2)	800-2¾ 761 (800-2¾)

HIRL Rwy 6-24, 14-32
TDZL/CL Rwy 6

PATUXENT RIVER, MARYLAND 38°17'N - 76°25'W PATUXENT RIVER NAS (TRAPNELL FLD) (KNHK)

HI-TACAN Y RWY 32



NE-3, 11 JUL 2024 to 08 AUG 2024

NE-3, 11 JUL 2024 to 08 AUG 2024