

PATUXENT RIVER, MARYLAND

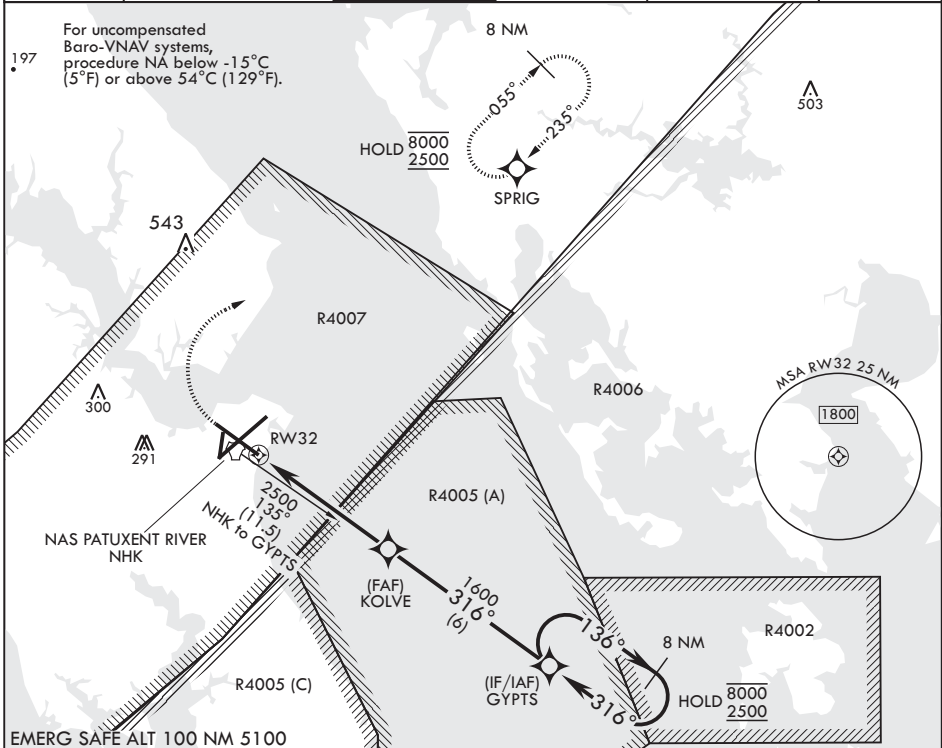
RNAV (GPS) RWY 32

APCH CRS	Rwy Idg	9732
316°	TDZE	18
	Arprt Elev	39

- (USN) PATUXENT RIVER NAS (TRAPNELL FLD) (KNHK)

RNP APCH	MISSED APPROACH: Climb to 600, then climbing right turn to 2500 direct SPRIG and hold.
----------	--

ATIS 322.425	APP CON/DEP CON 121.0 250.3	TOWER 123.7 343.65	GND CON 120.6 336.4	CLNC DEL 135.2 316.125	ASR/PAR
-----------------	--------------------------------	-----------------------	------------------------	---------------------------	---------

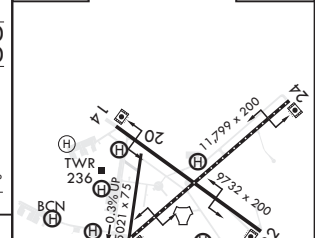
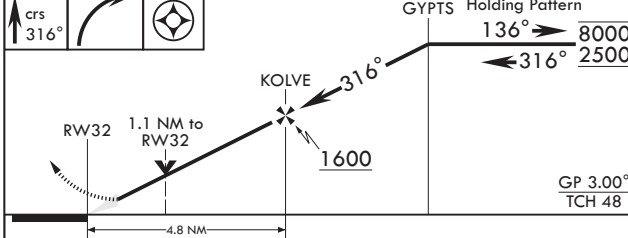


EMERG SAFE ALT 100 NM 5100

600 2500 SPRIG

crs 316°

ELEV 39 TDZE 18



CATEGORY	A	B	C	D	E
LNAV/VNAV DA	295- ⁷ / ₈ 277 (300- ⁷ / ₈)	306- ⁷ / ₈ 288 (300- ⁷ / ₈)	314- ⁷ / ₈ 296 (300- ⁷ / ₈)	325- ⁷ / ₈	307 (300- ⁷ / ₈)
LNAV MDA	420-1	402 (400-1)	420-1 ¹ / ₂	402	(400-1 ¹ / ₂)
CIRCLING	540-1 501 (600-1)	560-1 521 (600-1)	620-1 ¹ / ₂ 581 (600-1 ¹ / ₂)	680-2 641 (700-2)	820-2 ³ / ₄ 781 (800-2 ³ / ₄)

HIRL Rws 6-24, 14-32
TDZL/CL Rwy 6

PATUXENT RIVER, MARYLAND 38°17'N - 76°25'W PATUXENT RIVER NAS (TRAPNELL FLD) (KNHK)

Amdt 4 07SEP23

RNAV (GPS) RWY 32

NE-3, 11 JUL 2024 to 08 AUG 2024

NE-3, 11 JUL 2024 to 08 AUG 2024