

PATUXENT RIVER, MARYLAND

RNAV (GPS) RWY 6

APCH CRS	Rwy Idg	11,799
059°	TDZE	39
	Arpt Elev	39

-(USN)

PATUXENT RIVER NAS (TRAPNELL FLD) (KNHK)

RNP APCH

ALSF-1

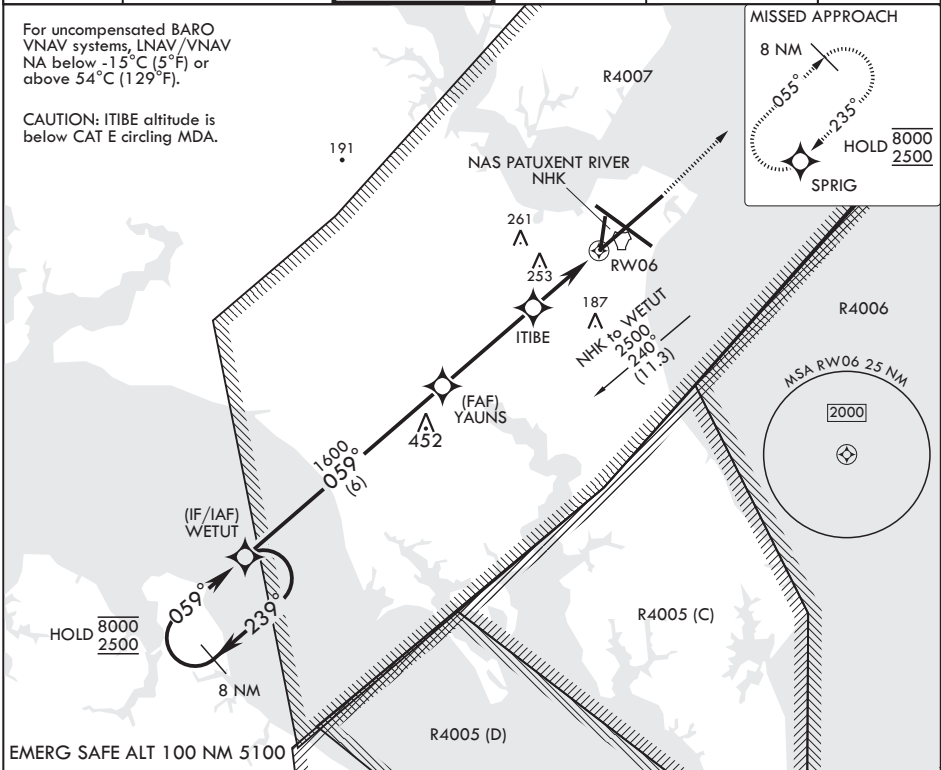
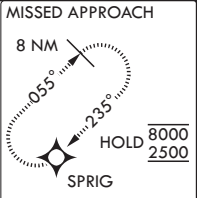
MISSED APPROACH: Climb to 700 then climbing left turn to 2500 direct SPRIG and hold.

* When ALS inop, increase vis to 1 3/8 miles.
** When ALS inop, increase CAT AB vis to 1 mile, CAT CD vis to 1 3/8 miles.

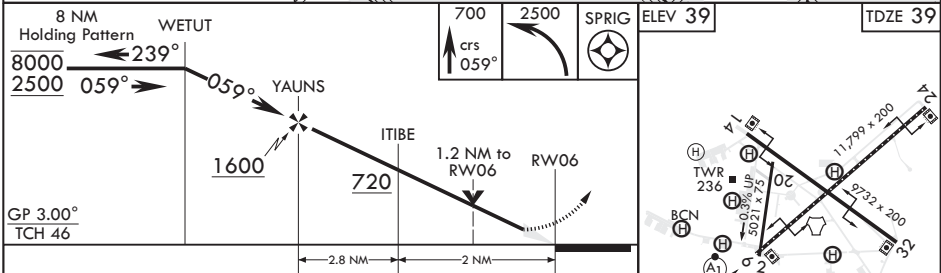


ATIS 322.425	APP CON/DEP CON 121.0 250.3	TOWER 123.7 343.65	GND CON 120.6 336.4	CLNC DEL 135.2 316.125	ASR/PAR
-----------------	--------------------------------	-----------------------	------------------------	---------------------------	---------

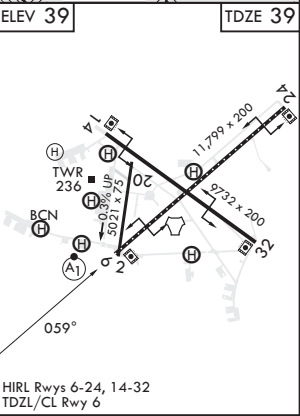
For uncompensated BARO VNAV systems, LNAV/VNAV NA below -15°C (5°F) or above 54°C (129°F).
CAUTION: ITIBE altitude is below CAT E circling MDA.



EMERG SAFE ALT 100 NM 5100



CATEGORY	A	B	C	D	E
LNAV/VNAV DA*	480-1 $\frac{3}{8}$		441	(500-1 $\frac{3}{8}$)	
LNAV MDA**	480-1	441 (500-1)	480-1 $\frac{3}{8}$	441	(500-1 $\frac{3}{8}$)
C CIRCLING	540-1 501 (600-1)	560-1 521 (600-1)	620-1 $\frac{1}{2}$ 581 (600-1 $\frac{1}{2}$)	680-2 641 (700-2)	820-2 $\frac{3}{4}$ 781 (800-2 $\frac{3}{4}$)



PATUXENT RIVER, MARYLAND

38°17'N - 76°25'W PATUXENT RIVER NAS (TRAPNELL FLD) (KNHK)

Amdt 3 07SEP23

RNAV (GPS) RWY 6

NE-3, 11 JUL 2024 to 08 AUG 2024

NE-3, 11 JUL 2024 to 08 AUG 2024