

SWABY NINE DEPARTURE (SWABY9, SWABY)

PATUXENT RIVER NAS (TRAPNELL FIELD) (KNHK)

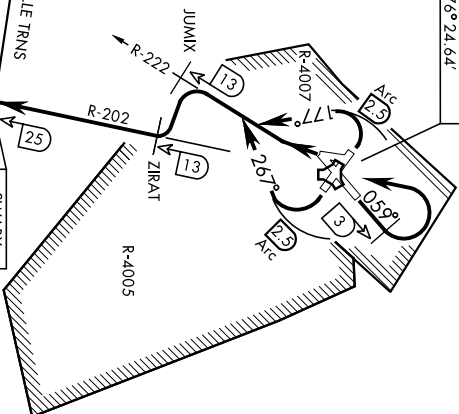
Alt-31.4 [USN]	PATUXENT RIVER, MARYLAND					
Knots	60	120	180	240	300	360
V/W [fpm]	310	620	930	1240	1550	1860

ATC Climb Rate to 9000

Departure Rwy 2-20 not authorized.
Minimum filing dh 10,000'.

- 285
- ATIS 322.425
- CLNC DEL 135.2 316.125
- GND CON 120.6 336.4
- PATUXENTOWER 123.7 343.65
- PATUXENT ARF/DEP CON 121.0 250.3

NAS PATUXENT RIVER
Chan 39 (Y) NHK
N38° 16.86'
W76° 24.64'



GORDONSVILLE
115.6 GVE
Chan 103
N38°00.82'
W78°09.18'

L-36, H-10

HOPEWELL
112.0 HPW
Chan 57
N37°19.73'
W77°06.96'

L-34-36, H-10-12

HARCUM
108.8 HCM
Chan 25
N37°26.97'
W76°42.66'

L-34-36, H-10-12

SWABY
N37° 52.38'
W76° 31.20'
9000

CAPE CHARLES
112.2 CCV
Chan 59
N37°20.85'
W75°59.86'

L-34-36, H-10-12

**ATC BRIEF
REQUIRED**

135.2 316.125

TACAN REQUIRED

Note: Chart not to scale
(Continued on next page)

SWABY NINE DEPARTURE (SWABY9, SWABY)

**PATUXENT RIVER, MARYLAND
PATUXENT RIVER NAS (TRAPNELL FIELD) (KNHK)**

▼ DEPARTURE ROUTE DESCRIPTION

TAKEOFF RWY 6: Climb heading 059°, at NHK TACAN 3 DME turn left direct NHK thence...

TAKEOFF RWY 14: Climbing right turn heading 267° within NHK TACAN 2.5 DME to intercept NHK R-222, thence...

TAKEOFF RWY 24: Climbing left turn to intercept NHK TACAN R-222, thence...

TAKEOFF RWY 32: Climbing left turn heading 177°, to intercept NHK TACAN R-222, thence...

...Then on NHK R-222 to JUMX. Climbing left turn to intercept 13 DME arc to ZIRAT, then turn right on R-202 to SWABY. Then on assigned transition or expect radar vectors.

GORDONSVILLE TRANSITION (SWABY9.GVE): Cross SWABY at or above 9,000, then on GVE VORTAC R-102 to GVE.

HARCUM TRANSITION (SWABY9.HCM): Cross SWABY at or above 9,000, then on HCM VORTAC R-027 to HCM.

HOPEWELL TRANSITION (SWABY9.HPW): Cross SWABY at or above 9,000, then on HPW VORTAC R-047 to HPW.

STEIN TRANSITION (SWABY9.STEIN): Cross SWABY at or above 9,000, then on NHK R-202 to UNNAC, then on CCV VORTAC R-323 to STEIN.