

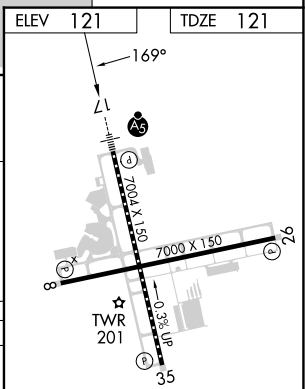
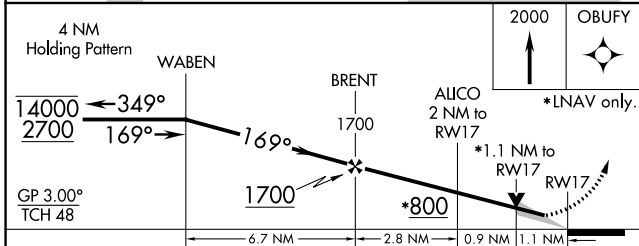
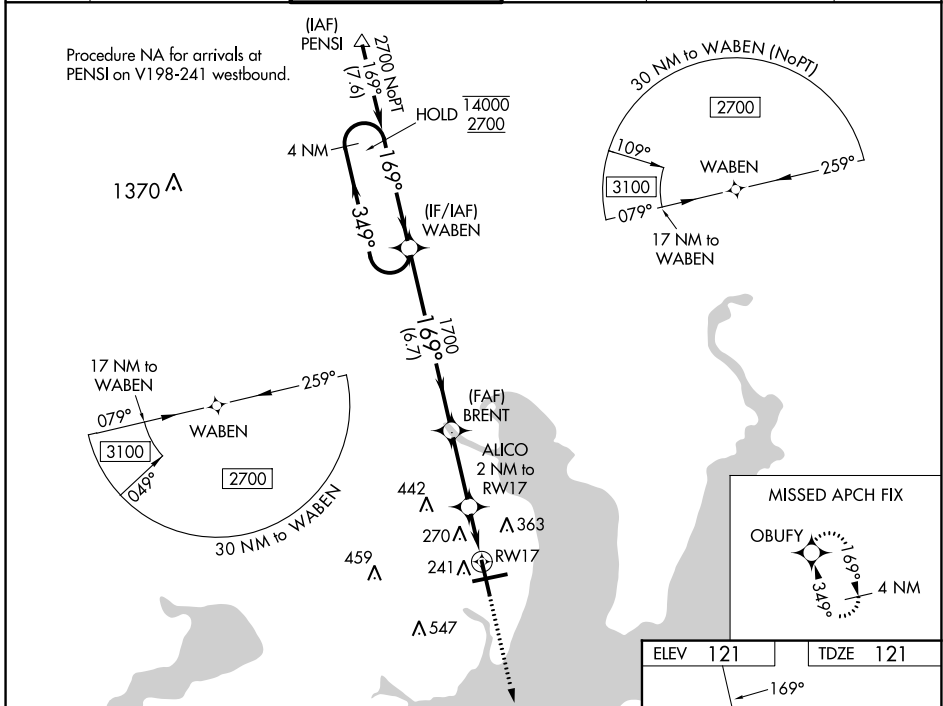
WAAS CH <b>97319</b> <b>W17A</b>	APP CRS <b>169°</b>	Rwy Idg TDZE Apt Elev	<b>7004</b> <b>121</b> <b>121</b>
--	------------------------	-----------------------------	---

# RNAV (GPS) RWY 17

PENSACOLA INTL (PNS)

RNP APCH.		MISSED APPROACH: Climb to 2000 direct OBUFY and hold.	
For uncompensated Baro-VNAV systems, LNAV/VNAV NA below 1°C or above 54°C. CAUTION: Intensive VFR student training in vicinity of airport.			

ATIS <b>121.25</b>	PENSACOLA APP CON <b>119.0 269.375</b>	PENSACOLA TOWER ★ <b>119.9 (CTAF) 0 257.8</b>	GND CON <b>121.9 348.6</b>	CLNC DEL <b>123.725 256.875</b>	UNICOM <b>122.95</b>
-----------------------	---	--	-------------------------------	------------------------------------	-------------------------



CATEGORY	A	B	C	D
LPV DA		321/18	200 (200-½)	
LNAV/VNAV DA		542/40	421 (500-¾)	
LNAV MDA	520/24	399 (400-½)	520/35	399 (400-¾)
CIRCLING	580-1 459 (500-1)	680-1 559 (600-1)	860-2 739 (800-2)	860-2 ¼ 739 (800-2 ¼)

REIL Rwy 8, 26 and 35  
TDZ/CL Rwy 17  
HIRL Rwy 8-26 and 17-35

SE-3, 11 JUL 2024 to 08 AUG 2024

SE-3, 11 JUL 2024 to 08 AUG 2024