

CEDAR LAKE NINE ARRIVAL

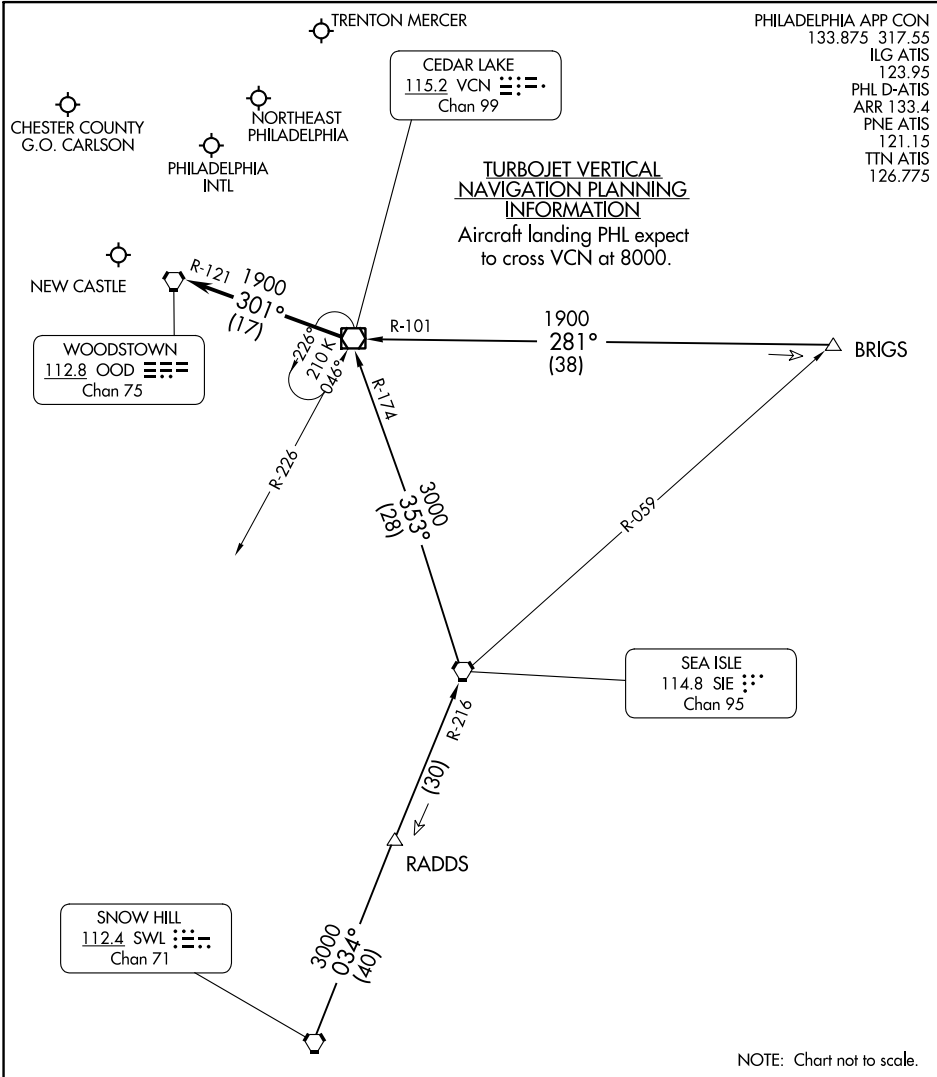
PHILADELPHIA, PENNSYLVANIA

PHILADELPHIA APP CON
 133.875 317.55
 ILG ATIS 123.95
 PHL D-ATIS ARR 133.4
 PNE ATIS 121.15
 TTN ATIS 126.775

CEDAR LAKE
 115.2 VCN Chan 99

TURBOJET VERTICAL NAVIGATION PLANNING INFORMATION

Aircraft landing PHL expect to cross VCN at 8000.



NE-4, 11 JUL 2024 to 08 AUG 2024

NE-4, 11 JUL 2024 to 08 AUG 2024

NOTE: Chart not to scale.

BRIGS TRANSITION (BRIGS.VCN9): From over BRIGS on VCN R-101 to VCN VOR/DME. Thence. . . .

SNOW HILL TRANSITION (SWL.VCN9): From over SWL VORTAC on SWL R-034 and SIE R-216 to SIE VORTAC, then on SIE R-353 and VCN R-174 to VCN VOR/DME. Thence. . . .

. . . from over VCN VOR/DME: Turbojets expect RADAR vectors to final approach course. Non-Turbojets continue on the VCN R-301 and the OOD R-121 to OOD VORTAC; expect RADAR vectors to final approach course.

CEDAR LAKE NINE ARRIVAL

PHILADELPHIA, PENNSYLVANIA