

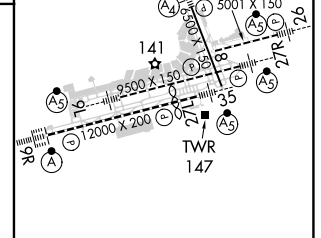
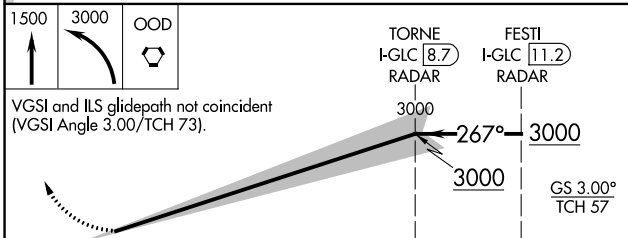
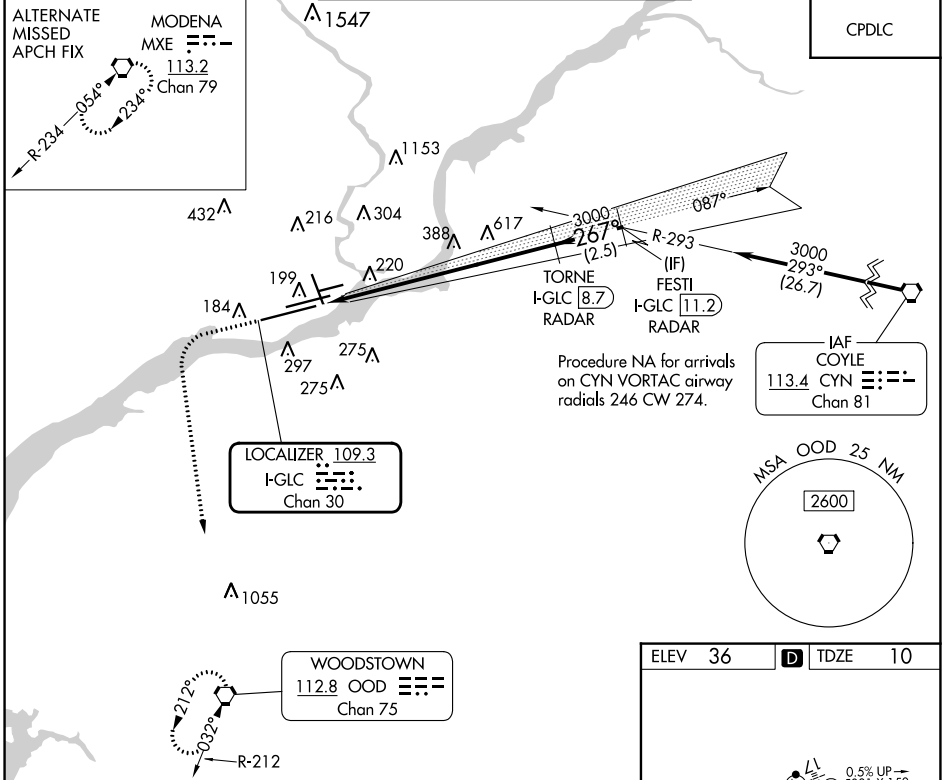
LOC/DME I-GLC 109.3 Chan 30	APP CRS 267°	Rwy Idg TDZE 10 Apt Elev 36	9912
--	------------------------	--	-------------

ILS RWY 27L (SA CAT II)

PHILADELPHIA INTL (PHL)

DME or RADAR required.	MALSR	MISSED APPROACH: Climb to 1500 then climbing left turn to 3000 direct OOD VORTAC and hold.
Requires specific OPSPEC, MSPEC, or LOA approval.		

D-ATIS ARR 133.4 DEP 135.925	PHILADELPHIA APP CON 124.35 319.15	PHILADELPHIA TOWER 118.5 327.05 (Rwys 9L/27R, 8/26 and 17/35) 135.1 327.05 (Rwy 9R/27L)	GND CON 121.9 348.6	CLNC DEL 118.85 348.6
--	--	---	-------------------------------	---------------------------------



ELEV 36	D TDZE 10			
1500	3000	OOD		
VGSI and ILS glidepath not coincident (VGSI Angle 3.00/TCH 73).				
TORNE I-GLC 8.7 RADAR				
FESTI I-GLC 11.2 RADAR				
3000				
267°				
3000				
GS 3.00°				
TCH 57				
109.3				
9.2 NM				
2.5 NM				
CATEGORY	A	B	C	D
S-ILS 27L	SA CAT II RA 100/12 100 DA 110			
SA CATEGORY II ILS - SPECIAL AIRCREW & AIRCRAFT CERTIFICATION REQUIRED				
TDZ/CL Rwy 9R			HIRL all Rwys	
REIL Rwys 9L and 35				

NE-4, 11 JUL 2024 to 08 AUG 2024

NE-4, 11 JUL 2024 to 08 AUG 2024