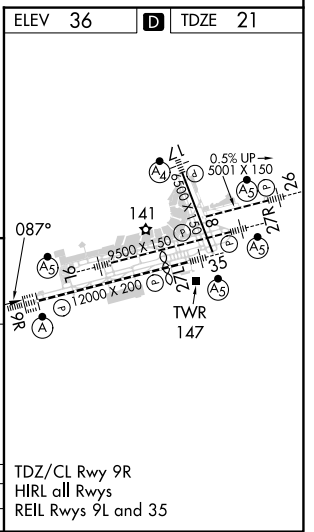
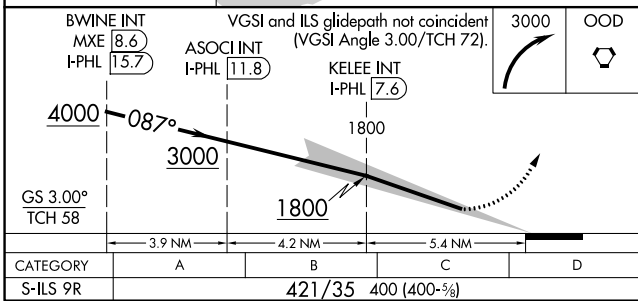
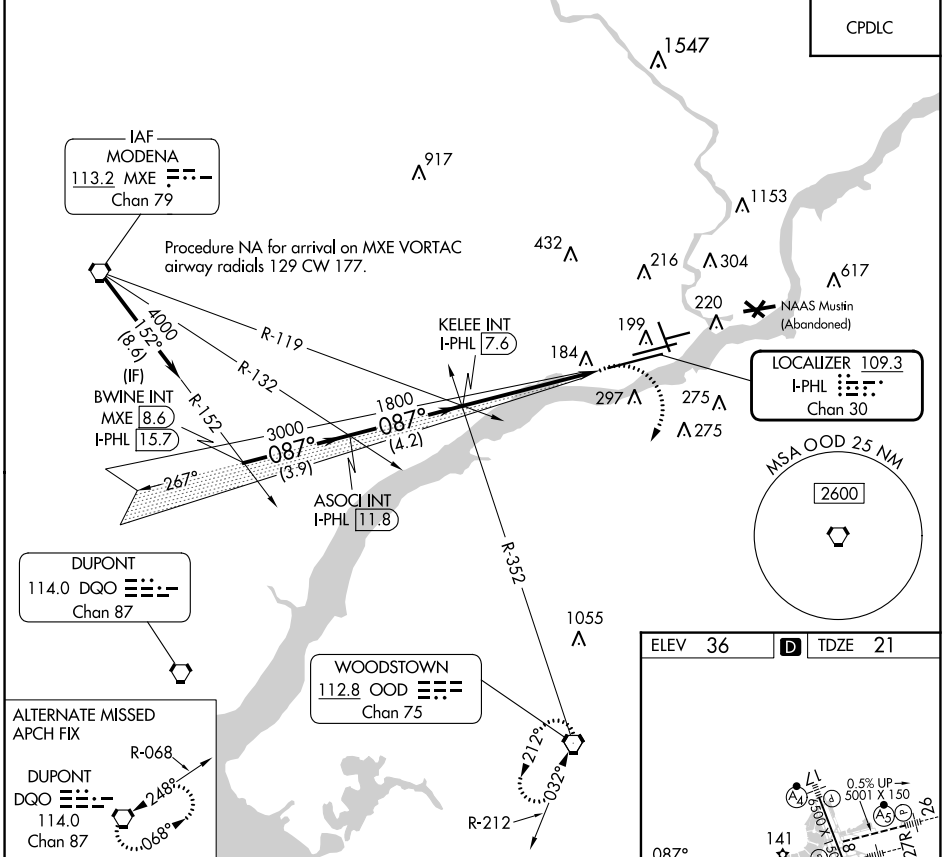


LOC/DME I-PHL <b>109.3</b> Chan <b>30</b>	APP CRS <b>087°</b>	Rwy Idg <b>12000</b> TDZE <b>21</b> Apt Elev <b>36</b>
---	------------------------	--

# ILS V RWY 9R (CONVERGING)

PHILADELPHIA INTL (PHL)

RADAR required.		ALS-F-2	MISSED APPROACH: Climbing right turn to 3000 direct OOD VORTAC and hold.	
<p>Simultaneous approach authorized. For inop ALS, increase S-ILS 9R all Cats visibility to RVR 6000.</p>				
D-ATIS ARR <b>133.4</b> DEP <b>135.925</b>	PHILADELPHIA APP CON <b>124.35 319.15</b>	PHILADELPHIA TOWER <b>118.5 327.05</b> (Rwys 9L/27R, 8/26 and 17/35) <b>135.1 327.05</b> (Rwy 9R/27L)	GND CON <b>121.9 348.6</b>	CLNC DEL <b>118.85 348.6</b>



NE-4, 11 JUL 2024 to 08 AUG 2024

NE-4, 11 JUL 2024 to 08 AUG 2024