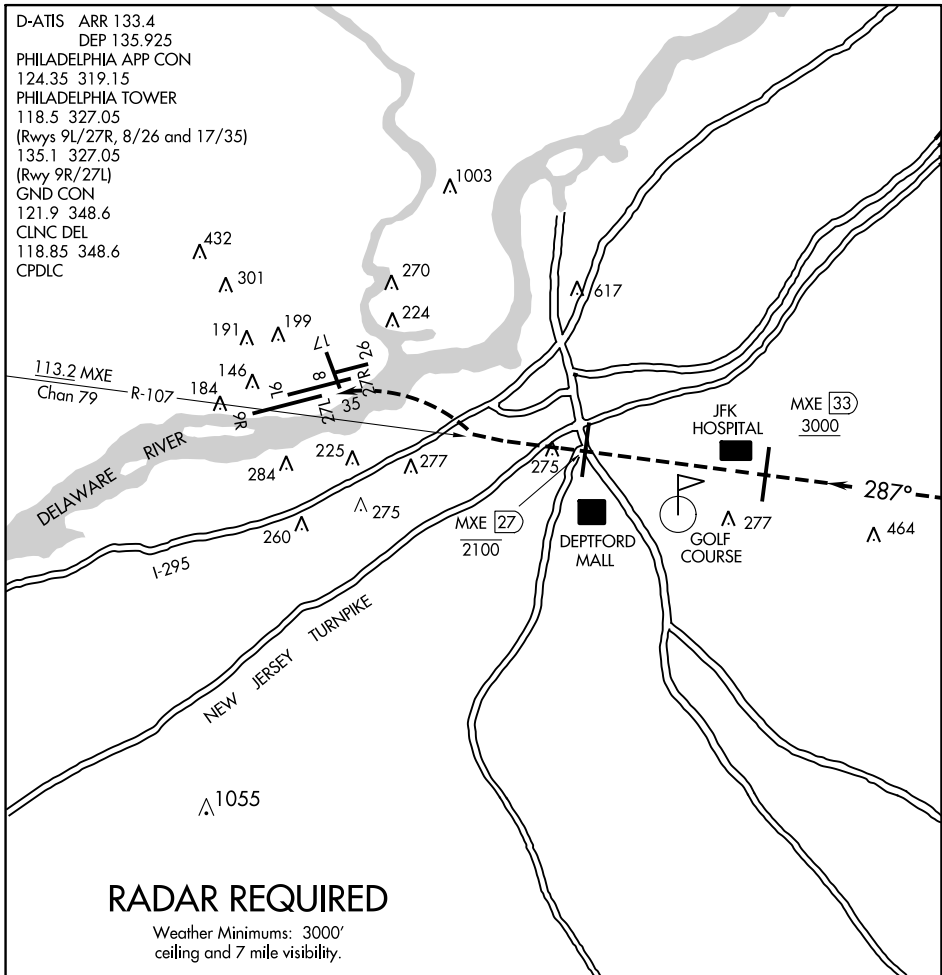


# LIBERTY VISUAL RWY 27L

AL-320 (FAA)

PHILADELPHIA INTL (PHL)  
PHILADELPHIA, PENNSYLVANIA

D-ATIS ARR 133.4  
 DEP 135.925  
 PHILADELPHIA APP CON  
 124.35 319.15  
 PHILADELPHIA TOWER  
 118.5 327.05  
 (Rwys 9L/27R, 8/26 and 17/35)  
 135.1 327.05  
 (Rwy 9R/27L)  
 GND CON  
 121.9 348.6  
 CLNC DEL  
 118.85 348.6  
 CPDLC



NE-4, 11 JUL 2024 to 08 AUG 2024

NE-4, 11 JUL 2024 to 08 AUG 2024

1	2	3	4	5	6	7	8	9	10	11	12	13	14	15	16	17	18	19	20	21	22	23
---	---	---	---	---	---	---	---	---	----	----	----	----	----	----	----	----	----	----	----	----	----	----

## LIBERTY VISUAL RWY 27L

Expect RADAR vectors to the MXE R-107.  
 Proceed Northwest on the MXE R-107 inbound for Rwy 27L.  
 Report the airport in sight to final controller.  
 Aircraft must remain on the MXE R-107 until the MXE R-107/27 DME;  
 then proceed visually to Rwy 27L or as assigned by the tower.  
 Expect aircraft to be utilizing a simultaneous visual or ILS approach  
 to Rwy 27R during this operation.

# LIBERTY VISUAL RWY 27L

39°52'N-75°14'W

PHILADELPHIA, PENNSYLVANIA  
PHILADELPHIA INTL (PHL)