

# HI-TACAN Y RWY 12

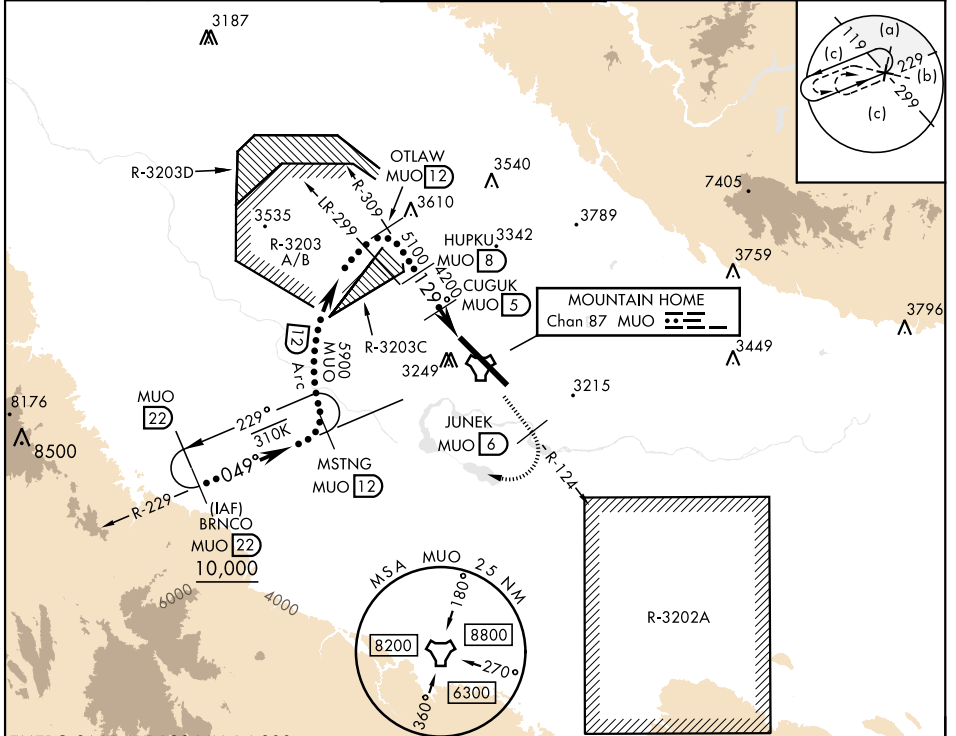
TACAN MUO Chan <b>87</b>	APCH CRS <b>129°</b>	Rwy ldg <b>13,510</b> TDZE <b>2987</b> Arprt Elev <b>2996</b>
--------------------------	----------------------	---

[USAF]

MOUNTAIN HOME AFB (KMUO)

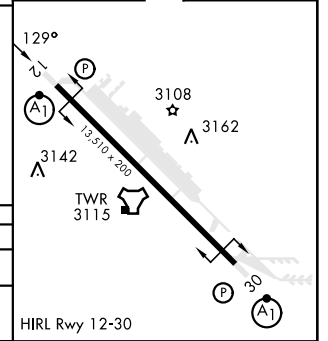
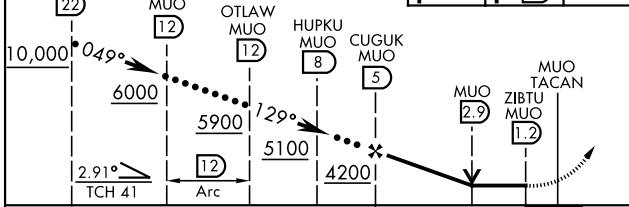
<p>▼ * When ALS inop, increase CAT CDE vis to 1 3/8 miles. ** Circling NA NE of Rwy 12-30.</p>	<p>ALSF-1 A1</p>	<p>MISSED APPROACH: Climb to 10,000 via MUO R-124 to JUNEK/6 DME, turn right and intercept MUO R-229 to MSTNG/12 DME and hold. Continue climb in hold to 10,000.</p>
--	----------------------	--

ATIS <b>273.5</b>	MOUNTAIN HOME APP CON <b>124.8 259.1</b>	MOUNTAIN HOME TOWER <b>133.85 253.5</b>	GND CON <b>120.5 275.8</b>	CLNC DEL <b>127.1 290.425</b>
-------------------	--	---	----------------------------	-------------------------------



EMERG SAFE ALT 100 NM 14,200

VGSi and descent angles not coincident (VGSi Angle 2.50/TCH 41).		10,000 MUO R-124	JUNEK MUO 6	MSTNG MUO 12	ELEV 2996	TDZE 2987
--	--	---------------------	----------------	-----------------	-----------	-----------



CATEGORY	C	D	E
S-12 *	3480/50	493 (500-1)	
CIRCLING **	3560-1 1/2 564 (600-1 1/2)	3560-2 564 (600-2)	3700-2 1/2 704 (800-2 1/2)

HIRL Rwy 12-30

# HI-TACAN Y RWY 12

NW-1, 11 JUL 2024 to 08 AUG 2024

NW-1, 11 JUL 2024 to 08 AUG 2024