

# HI-TACAN Y RWY 30

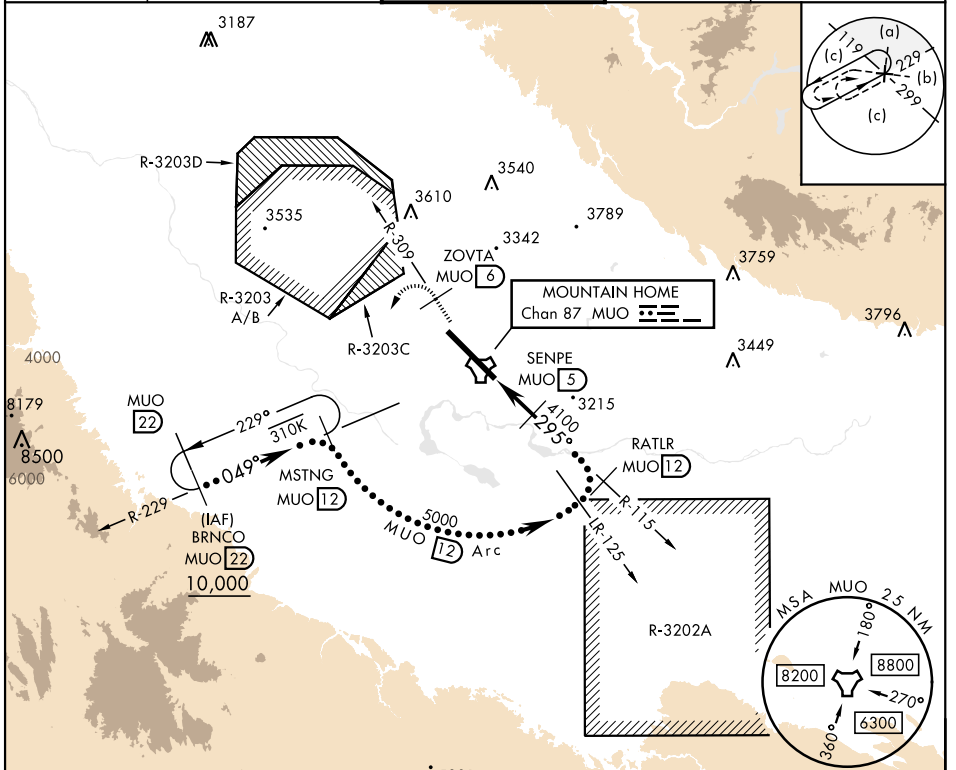
TACAN MUO Chan <b>87</b>	APCH CRS <b>295°</b>	Rwy Idg <b>13,510</b> TDZE <b>2996</b> Arprt Elev <b>2996</b>
-----------------------------	-------------------------	---

[USAF]

MOUNTAIN HOME AFB (KMUO)

<p>▼ * When ALS inop, increase CAT CDE vis to 1 3/8 miles. ** Circling NA NE of Rwy 12-30.</p>	<p>ALSF-1 A1</p>	<p>MISSED APPROACH: Climb to 10,000 via MUO R-309 to ZOVRTA/6 DME, turn left and intercept MUO R-229 to MSTNG/12 DME and hold. Continue climb in hold to 10,000.</p>
--	----------------------	--

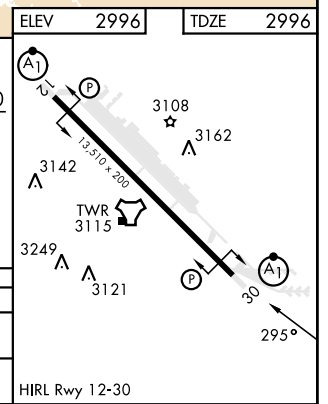
ATIS <b>273.5</b>	MOUNTAIN HOME APP CON <b>124.8 259.1</b>	MOUNTAIN HOME TOWER <b>133.85 253.5</b>	GND CON <b>120.5 275.8</b>	CLNC DEL <b>127.1 290.425</b>
----------------------	---	--	-------------------------------	----------------------------------



NW-1, 11 JUL 2024 to 08 AUG 2024

NW-1, 11 JUL 2024 to 08 AUG 2024

EMERG SAFE ALT 100 NM 14,200			* 5201		
10,000 ↑ MUO R-309	ZOVRTA MUO 6	MSTNG MUO 12	MSTNG MUO 12	RATLR MUO 12	BRNCO MUO 22
MUO TACAN	JERLU MUO 1.1	MUO 27	SENPE MUO 5	4100	6100
3.9 NM			5000	6100	10,000
CATEGORY			C	D	E
S-30 *			3480/50	484 (500-1)	
CIRCLING **			3560-1 1/2 564 (600-1 1/2)	3560-2 564 (600-2)	3700-2 1/2 704 (800-2 1/2)



# HI-TACAN Y RWY 30