

# TACAN Z RWY 12

MOUNTAIN HOME AFB (KMUO)

TACAN MUO Chan <b>87</b>	APCH CRS <b>129°</b>	Rwy Idg <b>13,510</b> TDZE <b>2987</b> Arprt Elev <b>2996</b>
--------------------------	----------------------	---

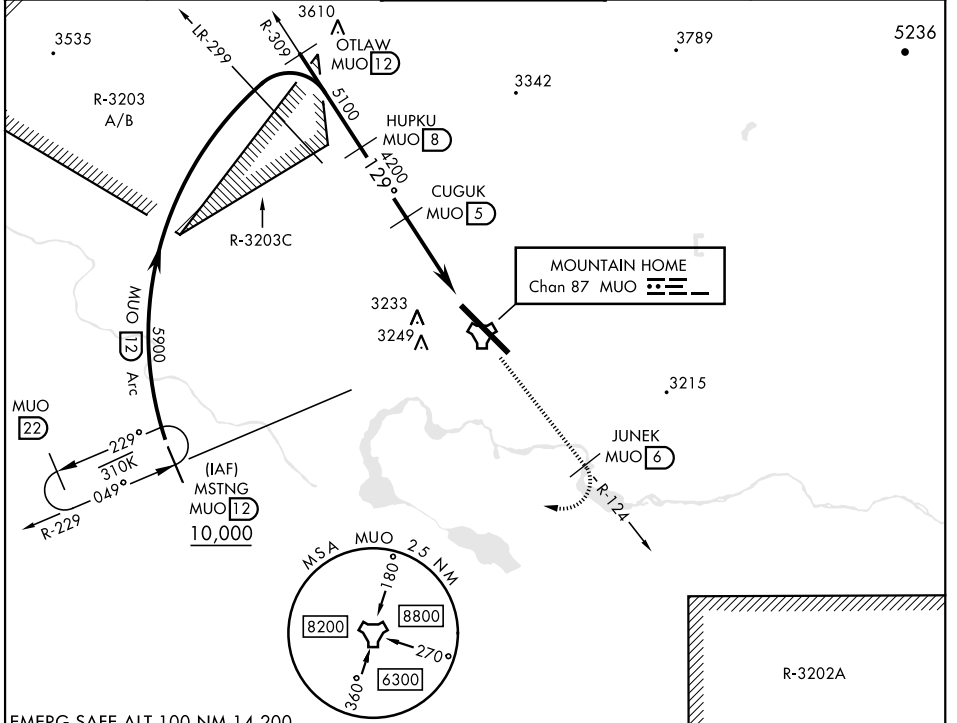
[USAF]

▼ \* When ALS inop, increase CAT AB RVR to 55 and vis to 1 mile, CAT CDE vis to 1½ miles.  
 \*\* Circling NA NE of Rwy 12-30.



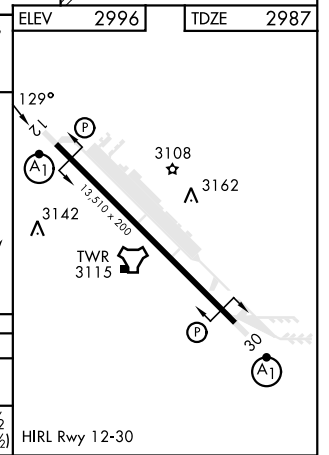
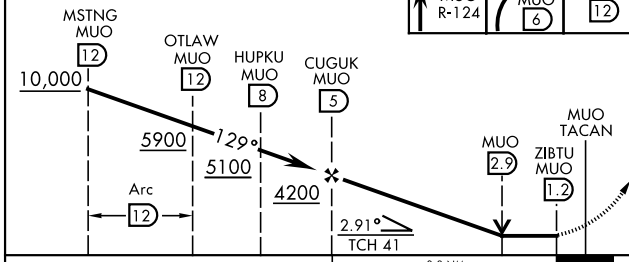
**MISSED APPROACH:** Climb to 10,000 via MUO R-124 to JUNEK/6 DME, turn right and intercept MUO R-229 to MSTNG/12 DME and hold. Continue climb in hold to 10,000.

ATIS <b>273.5</b>	MOUNTAIN HOME APP CON <b>124.8 259.1</b>	MOUNTAIN HOME TOWER <b>133.85 253.5</b>	GND CON <b>120.5 275.8</b>	CLNC DEL <b>127.1 290.425</b>
-------------------	--	---	----------------------------	-------------------------------



EMERG SAFE ALT 100 NM 14,200

VGSI and descent angles not coincident (VGSI Angle 2.50/TCH 41).



CATEGORY	A	B	C	D	E
S-12 *	3480/40	493 (500-¾)	3480/50	493 (500-1)	
<b>C</b> CIRCLING **	3520-1 524 (600-1)	3560-1 564 (600-1)	3560-1½ 564 (600-1½)	3560-2 564 (600-2)	3700-2½ 704 (800-2½)

HIRL Rwy 12-30

# TACAN Z RWY 12

NW-1, 11 JUL 2024 to 08 AUG 2024

NW-1, 11 JUL 2024 to 08 AUG 2024