

ROCKIES SIX DEPARTURE
(ROCK6, DEN) 16MAY24

(ROCK6, DEN) 24137
ROCKIES SIX DEPARTURE

AL-325 (FAA)

GREELEY-WELD COUNTY (GXY)
GREELEY, COLORADO

DENVER DEP CON
134.85 251.125
CLNC DEL
126.65

RADAR required.

**TOP ALTITUDE:
ASSIGNED BY ATC**

TAKEOFF MINIMUMS
All Runways: Standard.



MEEKER
115.2 EKR [M] [M] [M] [M]
Chan 99

KREMLING
113.8 RLG [M] [M] [M] [M]
Chan 85

GILL
114.2 GLL [M] [M] [M] [M]
Chan 89

RIFLE
113.35 RIL [M] [M] [M] [M]
Chan 80(Y)

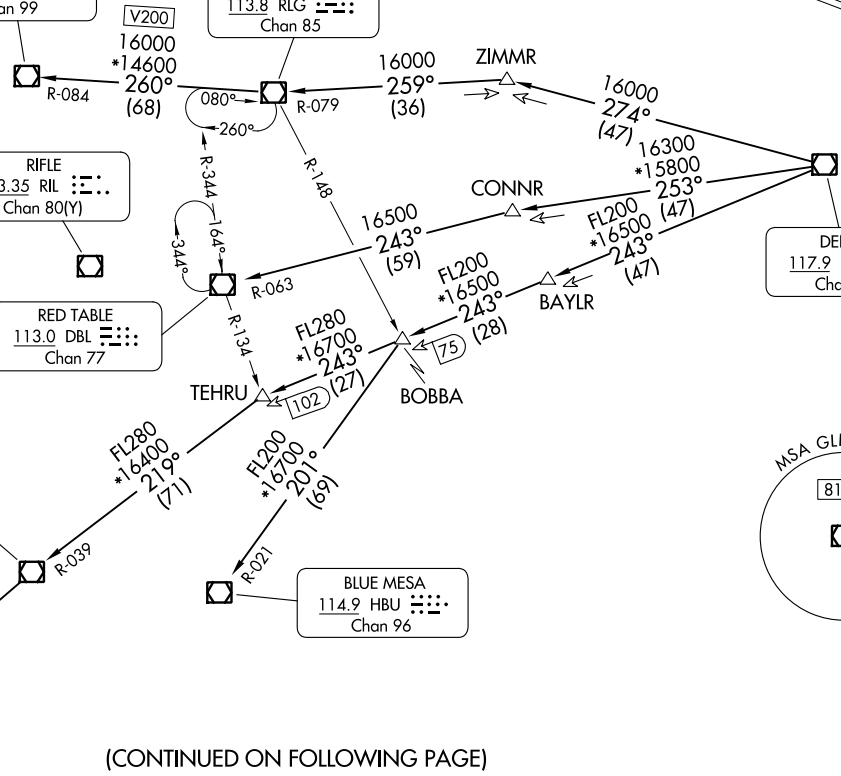
RED TABLE
113.0 DBL [M] [M] [M] [M]
Chan 77

MSA GLL 25 NM
8100

MONTROSE
117.1 MTJ [M] [M] [M] [M]
Chan 118

DOVE CREEK
114.6 DVC [M] [M] [M] [M]
Chan 93

BLUE MESA
114.9 HBU [M] [M] [M] [M]
Chan 96



(CONTINUED ON FOLLOWING PAGE)

NOTE: Chart not to scale.

GREELEY, COLORADO
GREELEY-WELD COUNTY (GXY)



DEPARTURE ROUTE DESCRIPTION

TAKEOFF ALL RUNWAYS: Fly assigned heading and altitude for RADAR vectors to assigned route, maintain ATC assigned altitude. Expect filed altitude 10 minutes after departure.

LOST COMMUNICATIONS: If no transmissions are received within one minute after departure, maintain assigned heading until 7000 feet, then climb to filed altitude direct DEN VOR/DME, then on assigned transition. If filed altitude is above 10000 feet, cross DEN VOR/DME at or above 11000 feet.

BLUE MESA TRANSITION (ROCKI6.HBU): From over DEN VOR/DME on DEN R-243 and HBU R-021 to HBU VOR/DME.

DOVE CREEK TRANSITION (ROCKI6.DVC): From over DEN VOR/DME on DEN R-243 and MTJ R-039 to MTJ VOR/DME, then on MTJ R-218 and DVC R-035 to DVC VORTAC.

KREMMLING TRANSITION (ROCKI6.RLG): From over DEN VOR/DME on DEN R-274 and RLG R-079 to RLG VOR/DME.

MEEKER TRANSITION (ROCKI6.EKR): From over DEN VOR/DME on DEN R-274 and RLG R-079 to RLG VOR/DME, then on RLG R-260 and EKR R-084 to EKR VOR/DME.

MONTROSE TRANSITION (ROCKI6.MTJ): From over DEN VOR/DME on DEN R-243 and MTJ R-039 to MTJ VOR/DME.

RED TABLE TRANSITION (ROCKI6.DBL): From over DEN VOR/DME on DEN R-253 and DBL R-063 to DBL VOR/DME.

SW-1, 11 JUL 2024 to 08 AUG 2024

SW-1, 11 JUL 2024 to 08 AUG 2024