

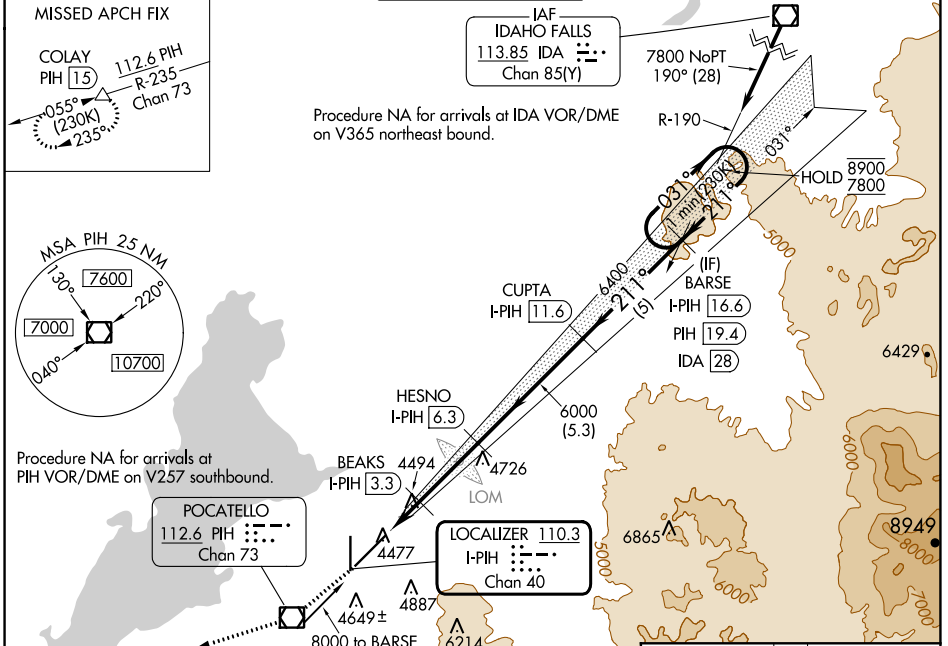
LOC/DME I-PIH 110.3 Chan 40	APP CRS 211°	Rwy Idg TDZE Apt Elev	9059 4452 4452
---	------------------------	-----------------------------	---

ILS or LOC RWY 21

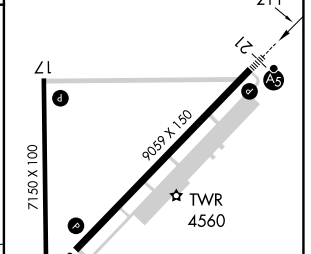
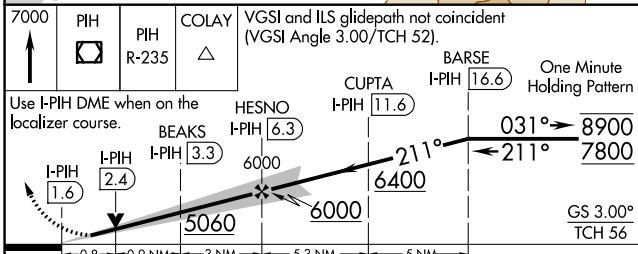
POCATELLO RGNL (PIH)

DME required.	MALSR	MISSED APPROACH: Climb to 7000 direct PIH VOR/DME and on PIH R-235 to COLAY/PIH 1.5 DME and hold, do not exceed 230K in holding pattern.
<p>⚠ Circling NA southeast of Rwy 3-21. For inop ALS, increase S-ILS-21 Cat E visibility to RVR 4000, S-LOC-21 Cat C/D/E to RVR 4500.</p> <p>*RVR 1800 authorized with use of FD or AP or HUD to DA.</p>		

ATIS 135.625	SALT LAKE CENTER 128.35 239.25	POCATELLO TOWER * 119.1 (CTAF) 257.8	GND CON 121.9	UNICOM 122.95
------------------------	--	--	-------------------------	-------------------------



ELEV 4452	TDZE 4452
-----------	-----------



CATEGORY	A	B	C	D	E
S-ILS 21*		4652/24	200 (200-½)		
S-LOC 21		4760/24	308 (400-½)		
CIRCLING	4860-1 408 (500-1)	4920-1 468 (500-1)	4920-1½ 468 (500-1½)	5020-2 568 (600-2)	5060-2¼ 608 (700-2¼)

HIRL Rwy 3-21
MIRL Rwy 17-35
REIL Rws 3 and 17

NW-1, 11 JUL 2024 to 08 AUG 2024

NW-1, 11 JUL 2024 to 08 AUG 2024