

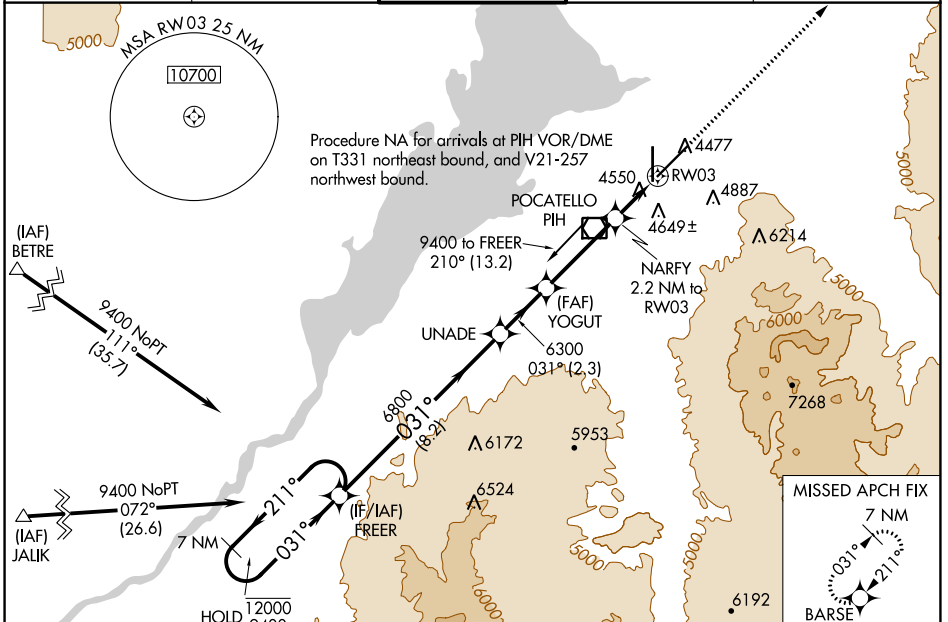
WAAS CH <b>97502</b> <b>W03A</b>	APP CRS <b>031°</b>	Rwy Idg <b>9059</b> TDZE <b>4444</b> Apt Elev <b>4452</b>
--	------------------------	---

# RNAV (GPS) RWY 3

POCATELLO RGNL (PIH)

RNP APCH - GPS.	MISSED APPROACH: Climb to 7800 direct BARSE and hold.
<p><b>▽</b> For uncompensated Baro-VNAV systems, LNAV/VNAV NA below -22°C or above 54°C. Circling NA southeast of Rwy 3-21.</p>	

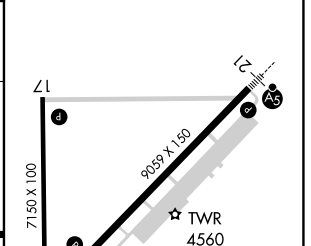
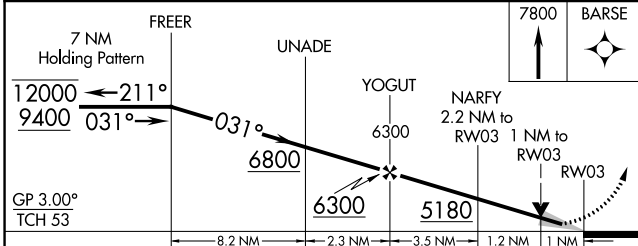
ATIS <b>135.625</b>	SALT LAKE CENTER <b>128.35 239.25</b>	<b>POCATELLO TOWER*</b> <b>119.1 (CTAF) 257.8</b>	GND CON <b>121.9</b>	UNICOM <b>122.95</b>
------------------------	--	--	-------------------------	-------------------------



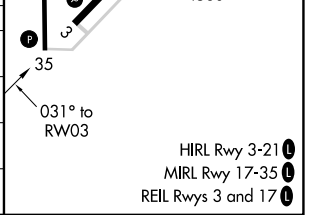
NW-1, 11 JUL 2024 to 08 AUG 2024

NW-1, 11 JUL 2024 to 08 AUG 2024

ELEV 4452	TDZE 4444
-----------	-----------



CATEGORY	A	B	C	D
LPV DA		4694- <sup>3</sup> / <sub>4</sub>	250 (300- <sup>3</sup> / <sub>4</sub> )	
LNAV/VNAV DA		4712- <sup>7</sup> / <sub>8</sub>	268 (300- <sup>7</sup> / <sub>8</sub> )	
LNAV MDA		4800-1	356 (400-1)	
CIRCLING	4860-1 408 (500-1)	4920-1 468 (500-1)	4920-1 <sup>1</sup> / <sub>2</sub> 468 (500-1 <sup>1</sup> / <sub>2</sub> )	5020-2 568 (600-2)



HIRL Rwy 3-21  
MIRL Rwy 17-35  
REIL Rws 3 and 17