

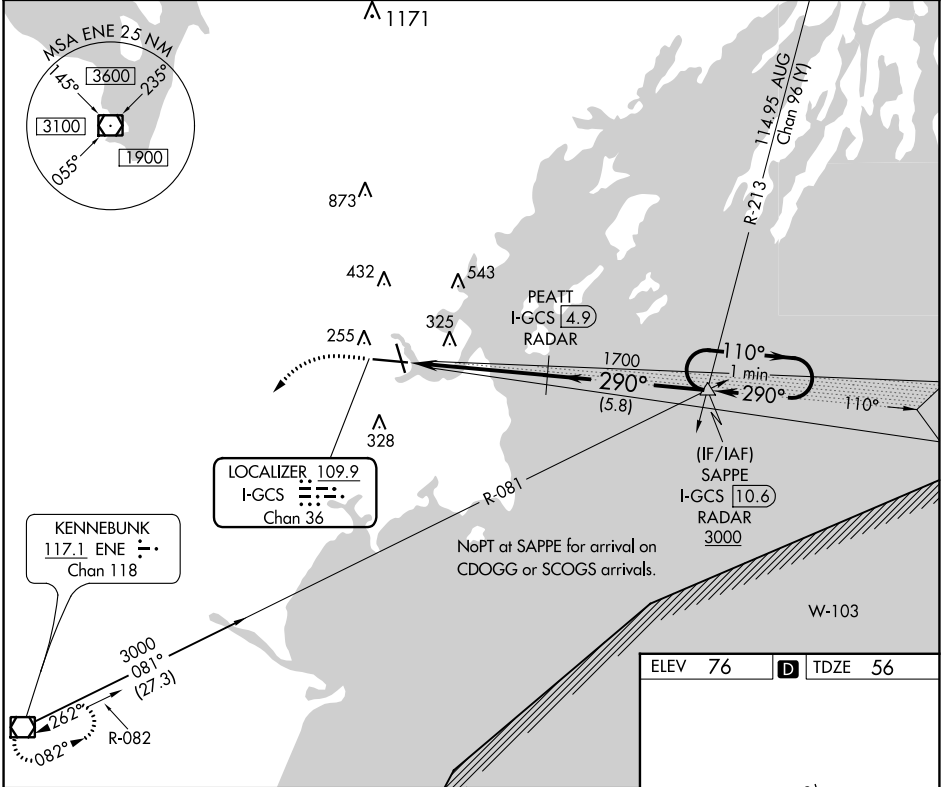
LOC/DME I-GCS 109.9 Chan 36	APP CRS 290°	Rwy Idg 7200 TDZE 56 Apt Elev 76
--	------------------------	---

ILS or LOC RWY 29

PORTLAND INTL JETPORT (P^WM)

	** RVR 1800 authorized with use of FD or AP or HUD to DA. DME or RADAR required.	MALSR 	MISSED APPROACH: Climb to 700 then climbing left turn to 3000 direct ENE VOR/DME and hold.
--	---	-----------	--

ATIS 119.05	PORTLAND APP CON * 119.75 269.35	PORTLAND TOWER * 120.9 (CTAF) 257.8	GND CON 121.9	CLNC DEL 121.9	UNICOM 122.95
-----------------------	--	--	-------------------------	--------------------------	-------------------------



	700	3000	ENE	PEATT I-GCS [4.9] RADAR	SAPPE I-GCS [10.6] RADAR	One Minute Holding Pattern
* LOC only	I-GCS DME ANTENNA [0.2]	* I-GCS [1.4]		1700		
				290°	110°	3000
				1700		GS 3.00° TCH 50
				1.5 NM	3.5 NM	5.8 NM
CATEGORY	A	B	C	D		
S-ILS 29**	256/24		200 (200-½)			
S-LOC 29	580/24	524 (600-½)	580/55	524 (600-1)		
CIRCLING	620-1 544 (600-1)	640-1 564 (600-1)	740-1¾ 664 (700-1¾)	860-2½ 784 (800-2½)		

ELEV 76	D	TDZE 56
---------	---	---------

TWR 162

81

110

0.5% UP

7200 X 150

36

290°

TDZ/CL Rwy 11

MIRL Rwy 18-36

HIRL Rwy 11-29

REIL Rws 18 and 36

FAF to MAP 5.1 NM

Knots	60	90	120	150	180
Min:Sec	5:06	3:24	2:33	2:02	1:42

NE-1, 11 JUL 2024 to 08 AUG 2024

NE-1, 11 JUL 2024 to 08 AUG 2024