

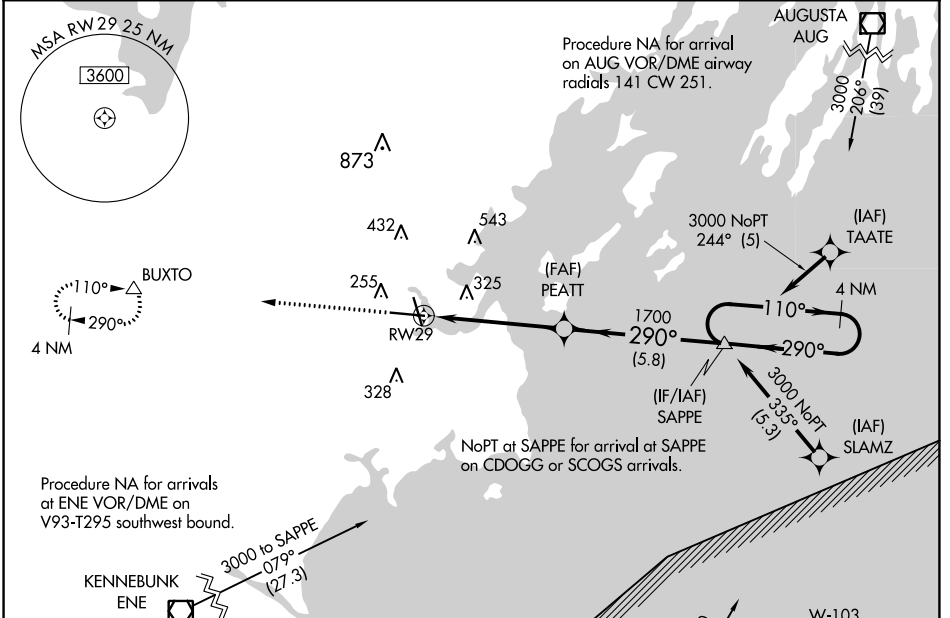
WAAS CH 65626 W29A	APP CRS 290°	Rwy Idg 7200 TDZE 56 Apt Elev 76
----------------------------------------	------------------------	-------------------------------------------------------------

RNAV (GPS) RWY 29

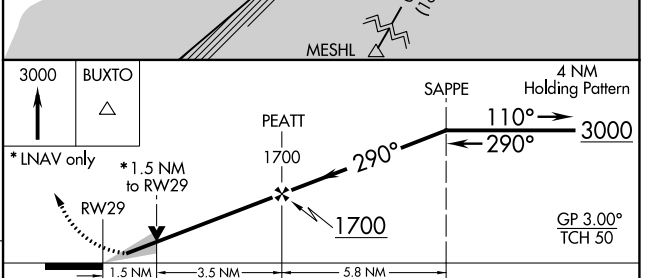
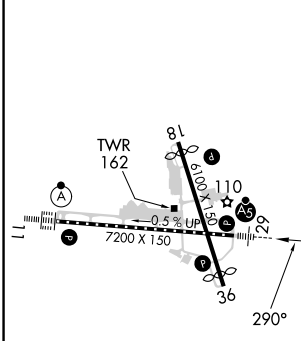
PORTLAND INTL JETPORT (PWM)

RNP APCH		MALSRL	MISSED APPROACH: Climb to 3000 direct BUXTO and hold, continue climb-in-hold to 3000.		
<p>▼ For uncompensated Baro-VNAV systems, LNAV/VNAV NA below -18°C or above 54°C. For inop MALSRL, increase LNAV/VNAV all Cats visibility to 1½ mile, increase LNAV Cat C/D visibility to 1¾ mile. **RVR 1800 authorized with use of FD or AP or HUD to DA.</p>					

ATIS 119.05	PORTLAND APP CON ★ 119.75 269.35	PORTLAND TOWER ★ 120.9 (CTAF) 257.8	GND CON 121.9	CLNC DEL 121.9	UNICOM 122.95
-----------------------	--------------------------------------------	-----------------------------------------------	-------------------------	--------------------------	-------------------------



ELEV 76	D	TDZE 56
---------	----------	---------



CATEGORY	A	B	C	D
LPV DA	** 256/24 200 (200-½)			
LNAV/VNAV DA	567-1¾ 511 (500-1¾)			
LNAV MDA	580/24	524 (600-½)	580/55	524 (600-1)
C CIRCLING	620-1 544 (600-1)	640-1 564 (600-1)	740-1¾ 664 (700-1¾)	860-2½ 784 (800-2½)

TDZ/CL Rwy 11 **Ⓛ**

MIRL Rwy 18-36 **Ⓛ**

HIRL Rwy 11-29 **Ⓛ**

REIL Rws 18 and 36 **Ⓛ**

NE-1, 11 JUL 2024 to 08 AUG 2024

NE-1, 11 JUL 2024 to 08 AUG 2024