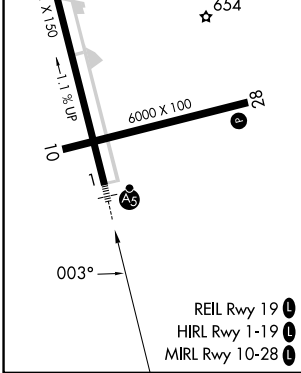
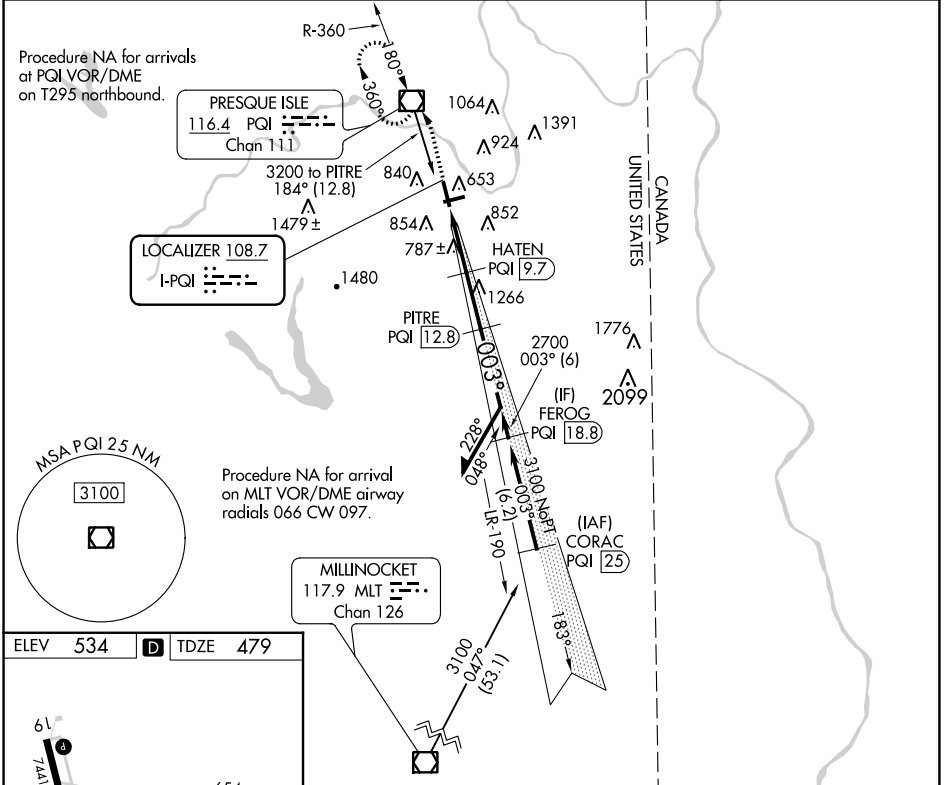


LOC I-PQI 108.7	APP CRS 003°	Rwy Idg TDZE Apt Elev	7441 479 534
---------------------------	------------------------	-----------------------------	---

ILS or LOC RWY 1

PRESQUE ISLE INTL (PQI)

DME required for LOC only.		MALSR 	MISSED APPROACH: Climb to 1100 then climbing left turn to 3000 direct PQI VOR/DME and hold, continue climb-in-hold to 3000.	
AWOS-3PT 118.025	BOSTON CENTER 124.75 239.05	CLNC DEL 121.6	UNICOM 122.8 (CTAF)	122.6



ELEV 534	D	TDZE 479																				
<table border="1"> <thead> <tr> <th>CATEGORY</th> <th>A</th> <th>B</th> <th>C</th> <th>D</th> </tr> </thead> <tbody> <tr> <td>S-ILS 1</td> <td colspan="4">679-1/2 200 (200-1/2)</td> </tr> <tr> <td>S-LOC 1</td> <td>1040-1/2</td> <td>561 (600-1/2)</td> <td>1040-1 1/4</td> <td>561 (600-1 1/4)</td> </tr> <tr> <td>C CIRCLING</td> <td>1140-1 606 (700-1)</td> <td>1160-1 626 (700-1)</td> <td>1300-2 1/4 766 (800-2 1/4)</td> <td>1360-2 3/4 826 (900-2 3/4)</td> </tr> </tbody> </table>			CATEGORY	A	B	C	D	S-ILS 1	679-1/2 200 (200-1/2)				S-LOC 1	1040-1/2	561 (600-1/2)	1040-1 1/4	561 (600-1 1/4)	C CIRCLING	1140-1 606 (700-1)	1160-1 626 (700-1)	1300-2 1/4 766 (800-2 1/4)	1360-2 3/4 826 (900-2 3/4)
CATEGORY	A	B	C	D																		
S-ILS 1	679-1/2 200 (200-1/2)																					
S-LOC 1	1040-1/2	561 (600-1/2)	1040-1 1/4	561 (600-1 1/4)																		
C CIRCLING	1140-1 606 (700-1)	1160-1 626 (700-1)	1300-2 1/4 766 (800-2 1/4)	1360-2 3/4 826 (900-2 3/4)																		

NE-1, 11 JUL 2024 to 08 AUG 2024

NE-1, 11 JUL 2024 to 08 AUG 2024