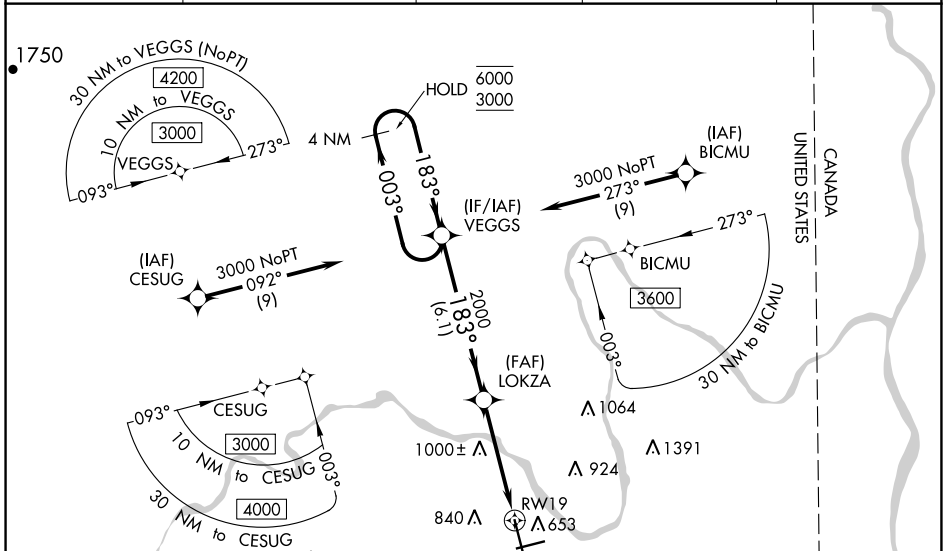


WAAS CH <b>99712</b> <b>W19A</b>	APP CRS <b>183°</b>	Rwy Idg TDZE Apt Elev	<b>7441</b> <b>534</b> <b>534</b>
--	------------------------	-----------------------------	---

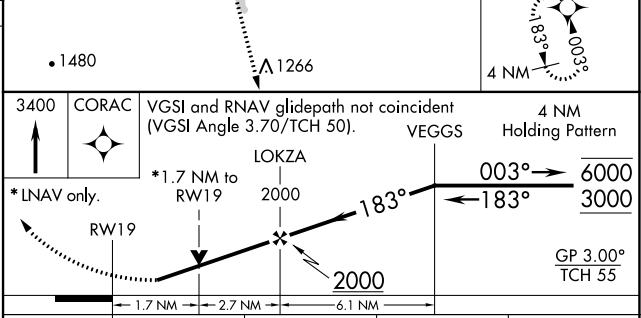
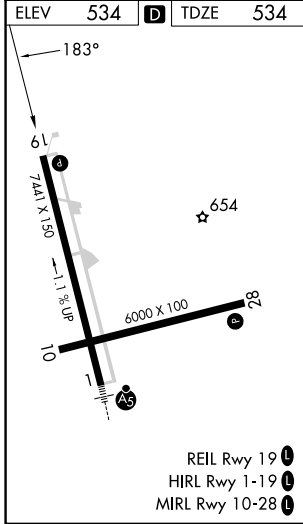
# RNAV (GPS) RWY 19

PRESQUE ISLE INTL (PQI)

RNP APCH.		MISSED APPROACH: Climb to 3400 direct CORAC and hold.	
<p><b>▽</b> Rwy 19 helicopter visibility reduction below 3/4 SM NA.  <b>▲</b> For uncompensated Baro-VNAV systems, LNAV/VNAV NA below -16°C or above 54°C.</p>			
AWOS-3PT <b>118.025</b>	BOSTON CENTER <b>124.75 239.05</b>	CLNC DEL <b>121.6</b>	UNICOM <b>122.8 (CTAF)</b>
			<b>122.6</b>



ELEV 534	<b>D</b>	TDZE 534
----------	----------	----------



CATEGORY	A	B	C	D
LPV DA	926-1 1/8		392 (400-1 1/8)	
LNAV/VNAV DA	1115-1 3/4		581 (600-1 3/4)	
LNAV MDA	1240-1 706 (800-1)		1240-2 706 (800-2)	
<b>C</b> CIRCLING	1240-1 706 (800-1)		1300-2 1/4 766 (800-2 1/4)	1360-2 3/4 826 (900-2 3/4)

NE-1, 11 JUL 2024 to 08 AUG 2024

NE-1, 11 JUL 2024 to 08 AUG 2024