

HI-ILS or LOC Z RWY 15L

LOC I-TRT 109.9	APCH CRS 145°	Rwy ldg TDZE Arprt Elev 8351 742 761	[USAF]	RANDOLPH AFB (KRND)
---------------------------	-------------------------	--	--------	---------------------

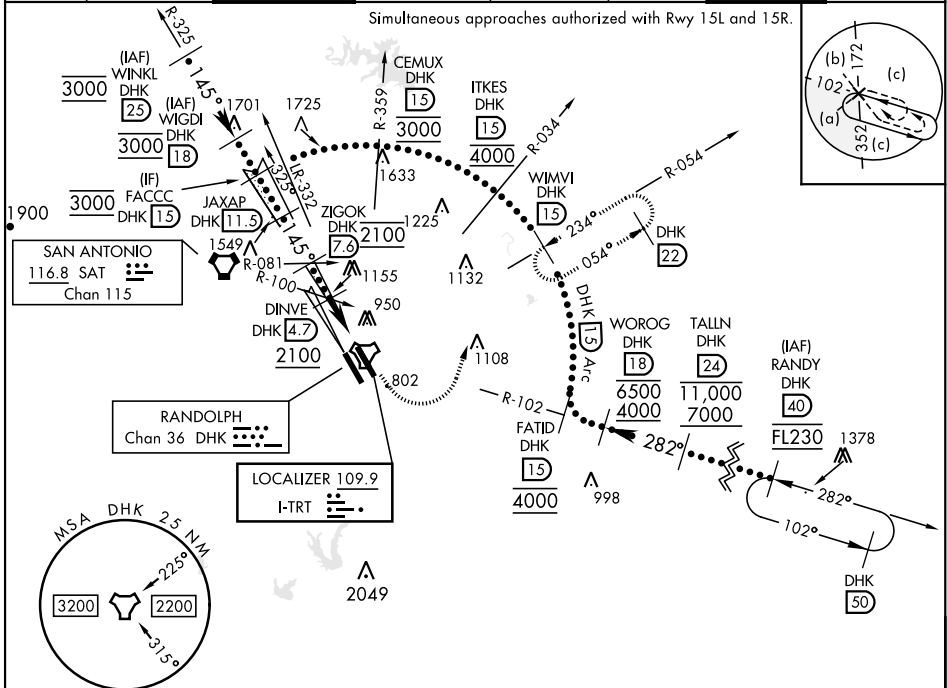
RADAR or DME required

* When ALS inop, increase CAT CDE vis to 1 1/2 miles.
** Circling NA SW of Rwy 15L-33R.

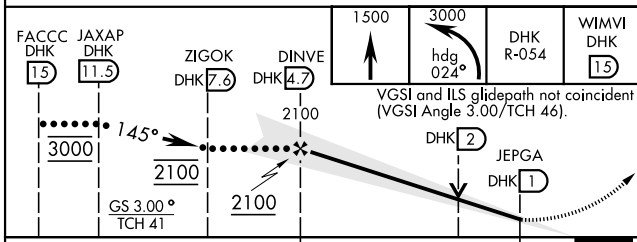
ALSF-1
A1

MISSED APPROACH: Climb to 1500, then climbing left turn heading 024° to 3000, intercept DHK TACAN R-054 to WIMVI and hold.

ATIS ★ 290.525	SAN ANTONIO APP CON 128.05 318.1	TOWER ★ 128.25 294.7	GND CON 119.65 275.8	CLNC DEL (RWY 15L-33R) 338.35	HANGOVER ATIS ★ 327.8	HANGOVER TOWER ★ 120.5 291.1	HANGOVER GND CON 124.75 353.75
--------------------------	--	--------------------------------	--------------------------------	---	---------------------------------	--	--



EMERG SAFE ALT 100 NM 4100



ELEV 761	TDZE 742
----------	----------

HIRL all rwys
ALS Rwy 15L nstd len 2100'

FAF to MAP 3.7 NM

Knots	120	140	160	180	200
Min:Sec	1:51	1:35	1:23	1:14	1:07

CATEGORY	C	D	E
S-ILS 15L	942/40	200	(200-34)
S-LOC 15L*	1260-1 1/4	518	(500-1 1/4)
CIRCLING**	1260-1 1/2 499 (500-1 1/2)	1800-3	1039 (1100-3)

HI-ILS or LOC Z RWY 15L

SC-3, 11 JUL 2024 to 08 AUG 2024

SC-3, 11 JUL 2024 to 08 AUG 2024