

ILS or LOC RWY 15R

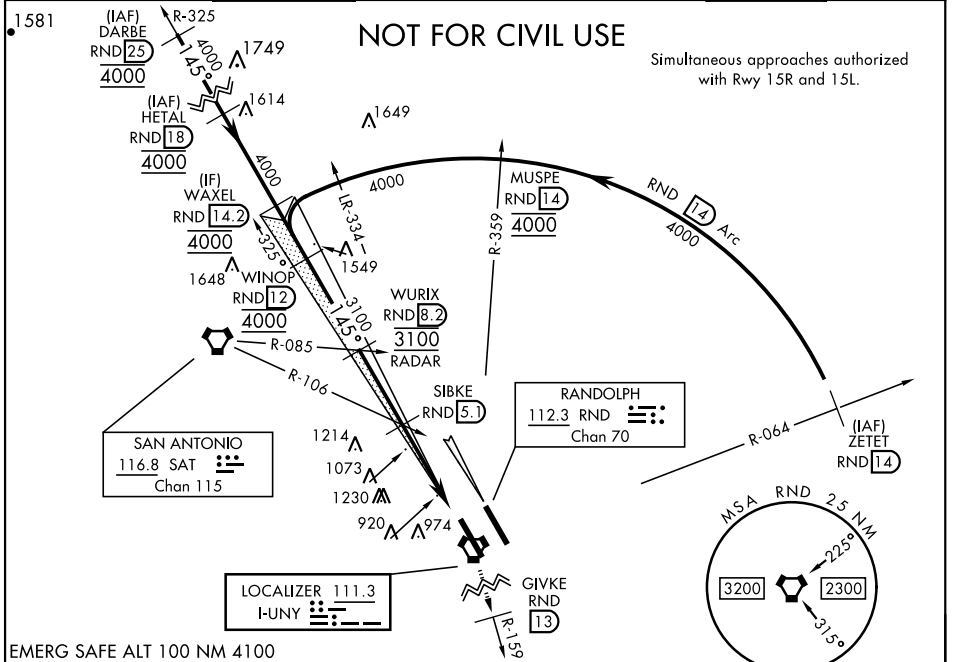
LOC I-UNY 111.3	APCH CRS 145°	Rwy Idg TDZE Arpt Elev 8352 761 761	[USAF]	RANDOLPH AFB (KRND)
---------------------------	-------------------------	-------------------------------------------------------------------------	--------	---------------------

RADAR or DME required.

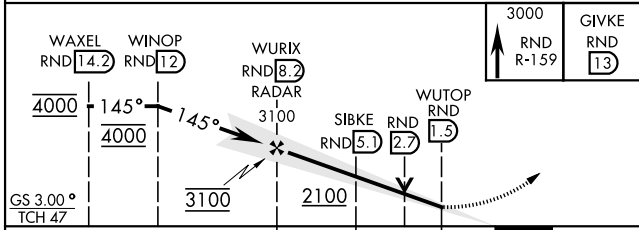
* Circling not authorized NE of Rwy 15R-33L.

MISSED APPROACH: Climb to 3000 out RND VORTAC R-159 to 13 DME (GIVKE). Expect ATC instructions.

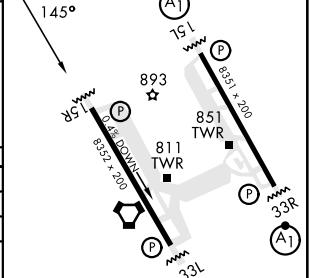
ATIS ★ 290.525	SAN ANTONIO APP CON 128.05 318.1	TOWER ★ 128.25 294.7	GND CON 119.65 275.8	CLNC DEL (RWY 15L-33R) 338.35	HANGOVER ATIS ★ 327.8	HANGOVER TOWER ★ 120.5 291.1	HANGOVER GND CON 124.75 353.75
--------------------------	--------------------------------------------	--------------------------------	--------------------------------	-----------------------------------------	---------------------------------	----------------------------------------	------------------------------------------



EMERG SAFE ALT 100 NM 4100



ELEV	761	TDZE	761
------	-----	------	-----



CATEGORY	A	B	C	D	E
S-ILS 15R	961/40		200	(200-¾)	
S-LOC 15R	1340/55	579 (600-1)	1340-1⅞	579 (600-1⅝)	
CIRCLING*	1340-1	579 (600-1)	1500-2 739 (800-2)	1800-3	1039 (1100-3)
WITHOUT LAST STEP DOWN FIX					
S-LOC 15R	1540/55 779 (800-1)	1540-1¼ 779 (800-1¼)	1540-2½	779	(800-2½)
CIRCLING*	1540-1 779 (800-1)	1540-1¼ 779 (800-1¼)	1540-2½	1800-3	1039 (1100-3)

HIRL all rwy's
ALS Rwy 15L nstd len 2100'

FAF to MAP 6.7 NM

Knots	60	90	120	150	180
Min:Sec	6:42	4:28	3:21	2:41	2:14

ILS or LOC RWY 15R

SC-3, 11 JUL 2024 to 08 AUG 2024

SC-3, 11 JUL 2024 to 08 AUG 2024