

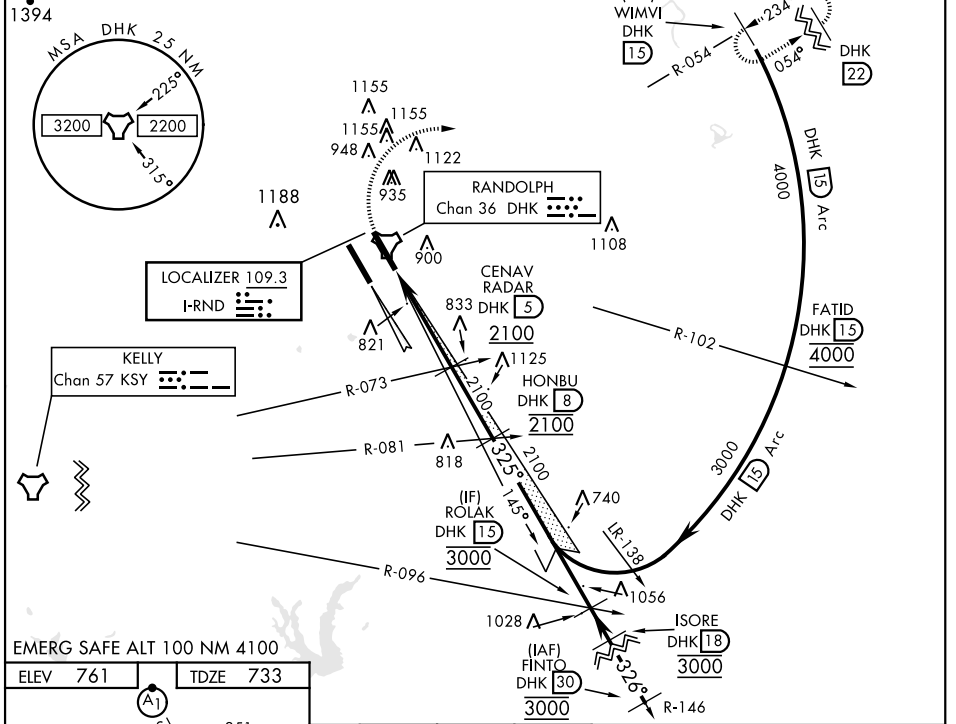
ILS or LOC Y RWY 33R

LOC I-RND 109.3	APCH CRS 325°	Rwy ldg TDZE Arprt Elev 8351 733 761	[USAF]	RANDOLPH AFB (KRND)
---------------------------	-------------------------	--	--------	---------------------

RADAR or DME required		ALSF-1 A1	MISSED APPROACH: Climb to 1500, then climbing right turn hdg 084° to 3000. Intercept DHK R-054 to WIMVI and hold.
* When ALS inop, increase RVR to 40 and vis to ¼ mile. ** When ALS inop, increase CAT AB RVR to 55, vis to 1 mile; CAT CDE vis to 1½ miles. *** Circling not authorized SW of Rwy 15L-33R.			

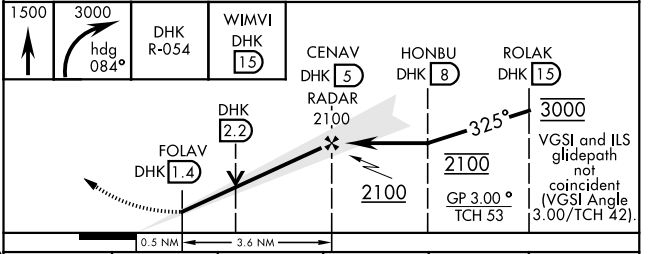
ATIS ★ 290.525	SAN ANTONIO APP CON 128.05 318.1	TOWER ★ 128.25 294.7	GND CON 119.65 275.8	CLNC DEL (RWY 15L-33R) 338.35	HANGOVER ATIS ★ 327.8	HANGOVER TOWER ★ 120.5 291.1	HANGOVER GND CON 124.75 353.75
--------------------------	--	--------------------------------	--------------------------------	---	---------------------------------	--	--

Simultaneous approaches authorized with Rwy 33R and 33L.



EMERG SAFE ALT 100 NM 4100

ELEV 761	TDZE 733
HIRL all rwys ALS Rwy 15L nstd len 2100' 821'	
FAF to MAP 3.6 NM	
Knots	60 90 120 150 180
Min:Sec	3:36 2:24 1:48 1:26 1:12



CATEGORY	A	B	C	D	E
S-ILS 33R *	933/24		200	(200-½)	
S-LOC 33R **	1180/24	447 (500-½)	1180/45	447 (500-¾)	
CIRCLING ***	1240-1	479 (500-1)	1260-1½ 499 (500-1½)	1800-3	1039 (1100-3)

ILS or LOC Y RWY 33R

SC-3, 11 JUL 2024 to 08 AUG 2024

SC-3, 11 JUL 2024 to 08 AUG 2024