

UNIVERSAL CITY, TEXAS

RNAV (GPS) RWY 15L

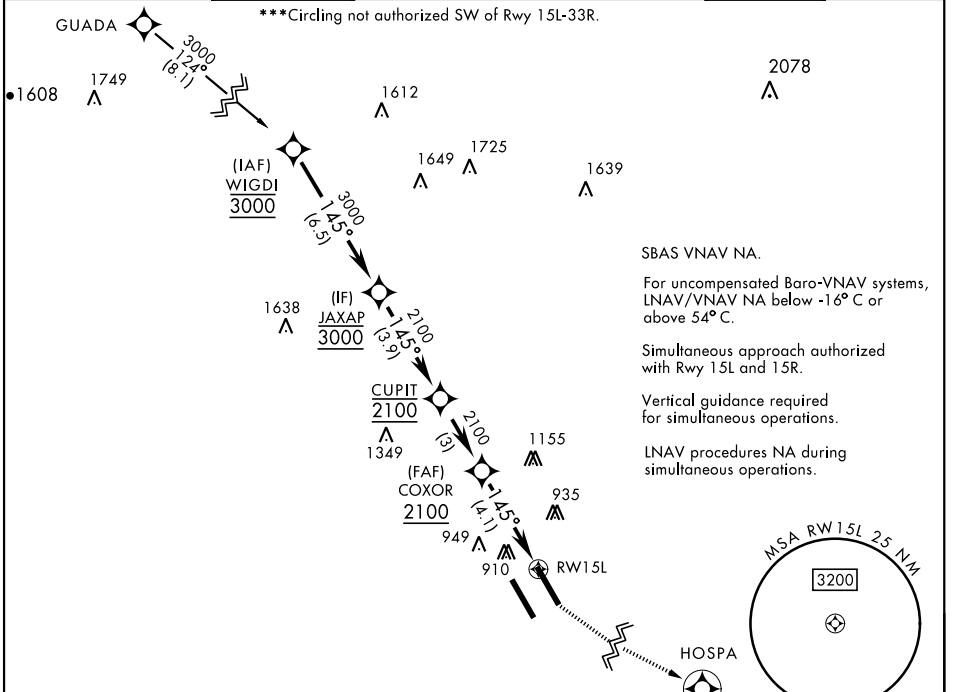
APCH CRS	Rwy Idg	8351
145°	TDZE	742
	Arpt Elev	761

[USAF]

RANDOLPH AFB (KRND)

RNP APCH - GPS		ALSF-1 	MISSED APPROACH: Climb to 1500, then climbing left turn to 3000 direct HOSPA. Expect ATC instructions.
----------------	--	------------	--

ATIS ★	SAN ANTONIO APP CON	TOWER ★	GND CON	CLNC DEL (RWY 15L-33R)	HANGOVER ATIS ★	HANGOVER TOWER ★	HANGOVER GND CON
290.525	128.05 318.1	128.25 294.7	119.65 275.8	338.35	327.8	120.5 291.1	124.75 353.75



EMERG SAFE ALT 100 NM 4100

WIGDI		JAXAP		CUPIT		COXOR		RW15L		HOSPA	
3000		3000		2100		2100		1500		3000	
GP 3.00° TCH 46		145°		145°		1.5 NM to RW15L		4.1 NM		ELEV 761 TDZE 742	
CATEGORY	A	B	C	D	E						
LNAV/VNAV DA *	1043/40 301 (300-¾)	1054/40 312 (300-¾)	1062/40 320 (400-¾)	1073/40 331 (400-¾)							
LNAV MDA**	1260/40 518 (500-¾)		1260-1¼ 518 (500-1¼)								
CIRCLING ***	1260-1	499 (500-1)	1260-1½ 499 (500-1½)		1800-3		1039 (1100-3)		HIRL all rwys ALS Rwy 15L nstd len 2100'		

SC-3, 11 JUL 2024 to 08 AUG 2024

SC-3, 11 JUL 2024 to 08 AUG 2024

UNIVERSAL CITY, TEXAS

29°32'N-98°17'W

RANDOLPH AFB (KRND)

Amtd 4 28DEC23

RNAV (GPS) RWY 15L