

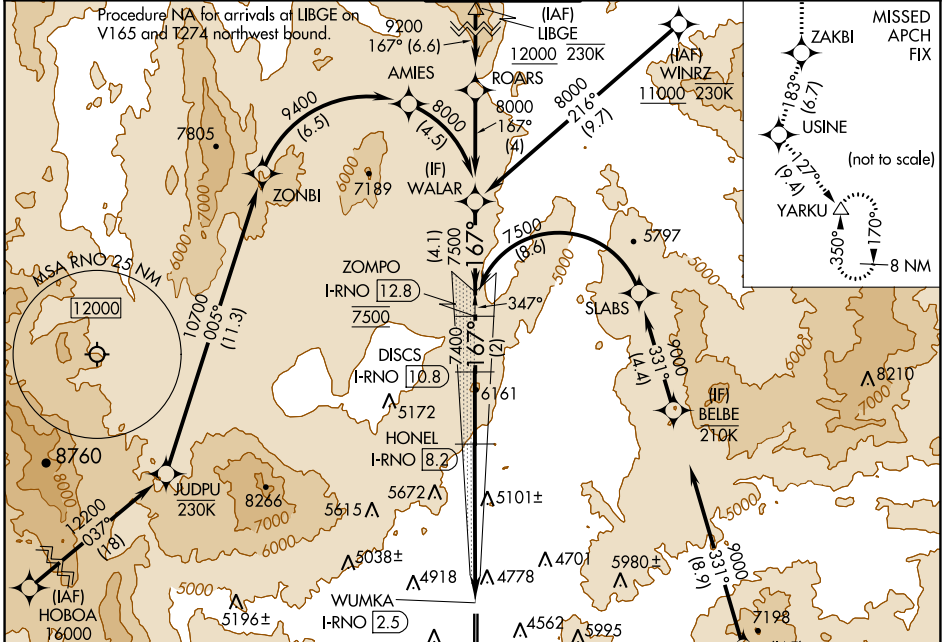
LOC/DME I-RNO	APP CRS	Rwy Idg	1001
110.9	167°	TDZE	4415
Chan 46		Apt Elev	4415

ILS Z or LOC Z RWY 17R

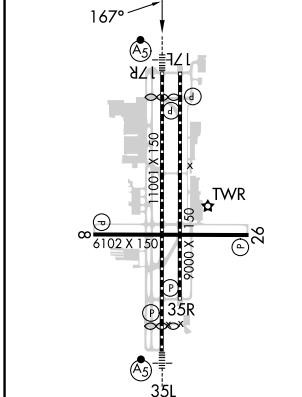
RENO/TAHOE INTL (RNO)

DME required. RNP APCH - GPS. From HOBOA or KLOCK: RF		MALS R	MISSED APPROACH: Climb to 13000 on the RNAV missed approach route to YARKU and hold, continue climb-in-hold to 13000. *Missed approach requires minimum climb of 390 feet per NM to 8000.
<p>▼ Circling Rwy 8 NA at night.</p> <p>▲ # For inop ALS, increase S-ILS 17R all Cats visibility to 2 SM.</p> <p>* RVR 1800 authorized with use of FD or AP or HUD to DA.</p>			

D-ATIS	NORCAL APP CON	RENO TOWER	GND CON	CLNC DEL	CPDLC
135.8 363.0	119.2 279.55 126.3 353.9	118.7 257.8	121.9 348.6	124.9 370.85	



ELEV 4415	TDZE 4415
-----------	-----------



13000	ZAKBI	USINE	YARKU	VGSI and ILS glidepath not coincident (VGSI Angle 3.06/TCH 77).		
↑	✧ tr 183°	✧ tr 127°	△	DISCS	ZOMPO	WALAR
				I-RNO [10.8]	I-RNO [12.8]	
See planview for multiple IF locations.				HONEL		
				I-RNO [8.2]	7400	8000
				WUMKA		
				I-RNO [2.5]	6540	7400
						GS 3.10° TCH 59

CATEGORY	A	B	C	D
S-ILS 17R*		4615/24	200 (200-1/2)	
S-ILS 17R#		5138-1 5/8	723 (800-1%)	
S-LOC 17R	5420/40 1005 (1100-3/4)	5420/55 1005 (1100-1)	5420-2 1/2	1005 (1100-2 1/2)
CIRCLING	5420-1 1/4 1005 (1100-1 1/4)	5420-1 1/2 1005 (1100-1 1/2)	6480-3	2065 (2100-3)

MIRL Rwy 8-26
REIL Rwy 8, 17L, 26, and 35R
HIRL Rwy 17R-35L and 17L-35R

SW-4, 11 JUL 2024 to 08 AUG 2024

SW-4, 11 JUL 2024 to 08 AUG 2024