

LOC/DME I-RNO	APP CRS	Rwy Idg	17R	17L
<b>110.9</b>	<b>167°</b>	TDZE	<b>10001 4415</b>	<b>9000 4415</b>
Chan <b>46</b>		Apt Elev	<b>4415 4415</b>	

# LOC Y RWY 17R

RENO/TAHOE INTL (RNO)

**DME required.**

▼ Circling Rwy 8 NA at night. For inop ALS, increase S-LOC 17R\* Cat E visibility to 3 SM. Circling NA for Cat E southwest of Rwy 8 and 35L.

# Inop table does not apply to Cats C, D and E.

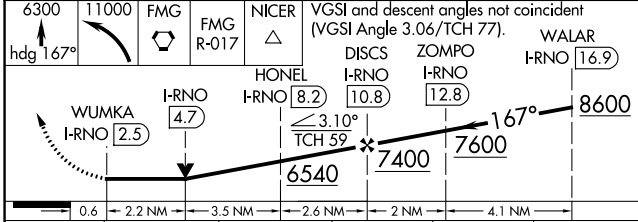
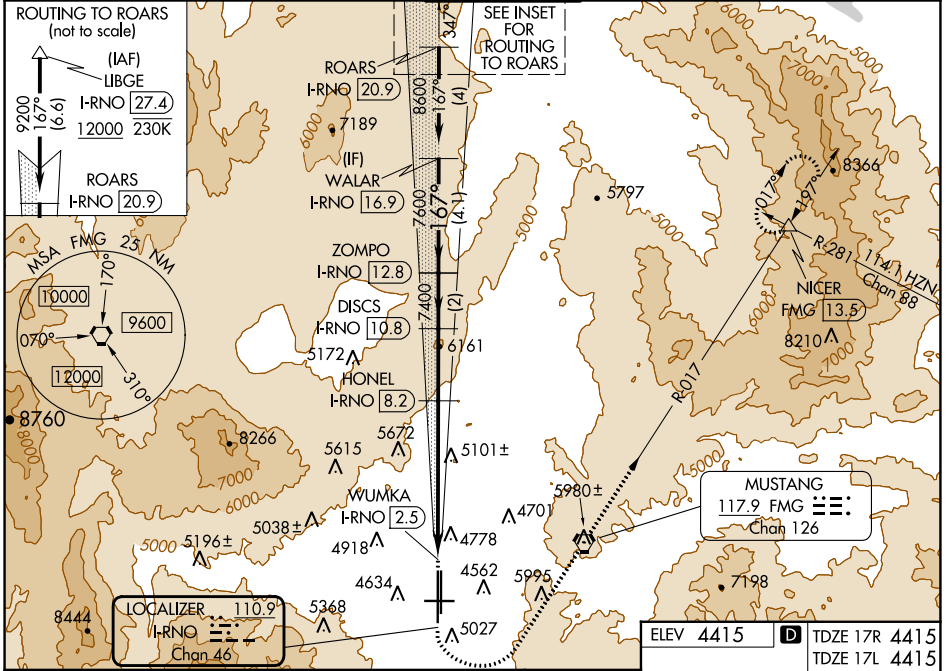
MALSR 17R

MISSED APPROACH: Climb to 6300 on heading 167° then climbing left turn 11000 direct FMG VORTAC and on FMG VORTAC R-017 to NICER INT and hold, continue climb-in-hold to 11000.

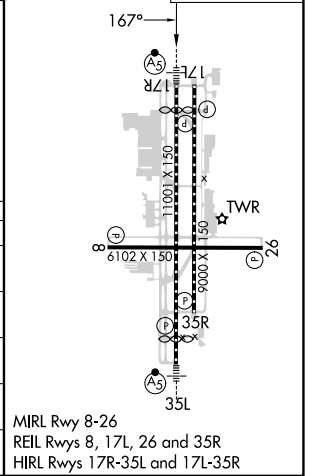
\* Missed approach requires minimum climb of 320 feet per NM to 8000.

† Missed approach requires minimum climb of 260 feet per NM to 8000.

D-ATIS	NORCAL APP CON	RENO TOWER	GND CON	CLNC DEL	CPDLC
<b>135.8 363.0</b>	<b>119.2 279.55 126.3 353.9</b>	<b>118.7 257.8</b>	<b>121.9 348.6</b>	<b>124.9 370.85</b>	



ELEV 4415	D TDZE 17R 4415	TDZE 17L 4415
-----------	-----------------	---------------



CATEGORY	A	B	C	D	E
S-LOC 17R*	5420/40 1005 (1100-¾)	5420/55 1005 (1100-1)	5420-2½	1005 (1100-2½)	
SIDESTEP 17L*#	5420-1¼ 1005 (1100-1¼)	5420-1½ 1005 (1100-1½)	5420-3	1005 (1100-3)	
S-LOC 17RT#	5720/40 1305 (1400-¾)	5720/55 1305 (1400-1)	5720-3	1305 (1400-3)	
S-LOC 17R#	5920/40 1505 (1600-¾)	5920/55 1505 (1600-1)	5920-3	1505 (1600-3)	6180-3 1765 (1800-3)
CIRCLING	5920-1¼ 1505 (1600-1¼)	5920-1½ 1505 (1600-1½)	6480-3	2065 (2100-3)	6700-3 2285 (2300-3)

SW-4, 11 JUL 2024 to 08 AUG 2024

SW-4, 11 JUL 2024 to 08 AUG 2024