

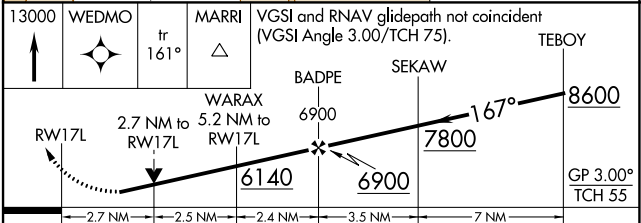
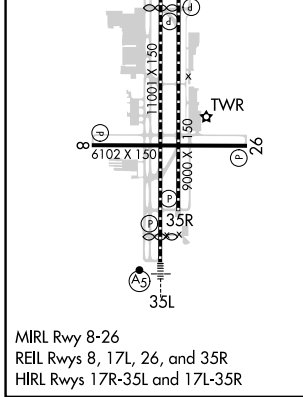
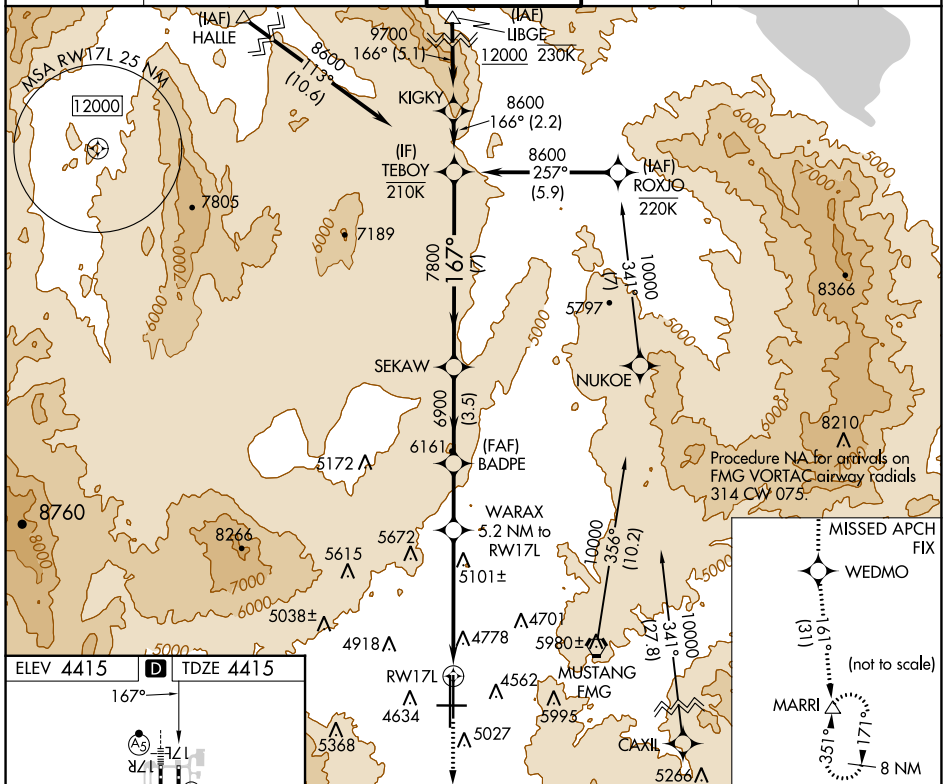
WAAS CH 72909 W17A	APP CRS 167°	Rwy Idg TDZE Apt Elev	9000 4415 4415
--	------------------------	-----------------------------	---

RNAV (GPS) X RWY 17L

RENO/TAHOE INTL (RNO)

RNP APCH - GPS.	<p>▼ Circling Rwy 8 NA at night. Rwy 17L helicopter visibility reduction below 3/4 SM NA.</p> <p>▲ For uncompensated Baro-VNAV systems, LNAV/VNAV NA below -9°C or above 54°C.</p>	MISSED APPROACH: Climb to 13000 direct WEDMO and on track 161° to MARRI and hold.
-----------------	--	---

D-ATIS 135.8 363.0	NORCAL APP CON 119.2 279.55 126.3 353.9	RENO TOWER 118.7 257.8	GND CON 121.9 348.6	CLNC DEL 124.9 370.85	CPDLC
------------------------------	---	----------------------------------	-------------------------------	---------------------------------	-------



<p>13000 WEDMO</p> <p>MARRI</p> <p>TEBOY</p> <p>↑</p> <p>tr 161°</p> <p>△</p>	<p>VGSI and RNAV glidepath not coincident (VGSI Angle 3.00/TCH 75).</p>			
<p>↑</p> <p>167°</p> <p>8600</p> <p>7800</p> <p>6140</p> <p>6900</p> <p>2.7 NM</p> <p>2.5 NM</p> <p>2.4 NM</p> <p>3.5 NM</p> <p>7 NM</p> <p>GP 3.00°</p> <p>TCH 55</p>				
CATEGORY	A	B	C	D
LPV DA	5109-2		694 (700-2)	
LNAV/VNAV DA	5094-1 7/8		679 (700-1 7/8)	
LNAV MDA	5360-1 1/4	945 (1000-1 1/4)	5360-2 1/2	945 (1000-2 1/2)
C CIRCLING	5360-1 1/4	945 (1000-1 1/4)	5360-1 1/2	945 (1000-1 1/2)
	6460-3		2045 (2100-3)	

SW-4, 11 JUL 2024 to 08 AUG 2024

SW-4, 11 JUL 2024 to 08 AUG 2024