

(ZEFFR9.ZEFFF) 24193

# ZEFFR NINE DEPARTURE (RNAV)

RENO/TAHOE INTL (RNO)  
RENO, NEVADA

AL-346 (FAA)

RNAV 1 - GPS.

**TOP ALTITUDE:  
FL190**

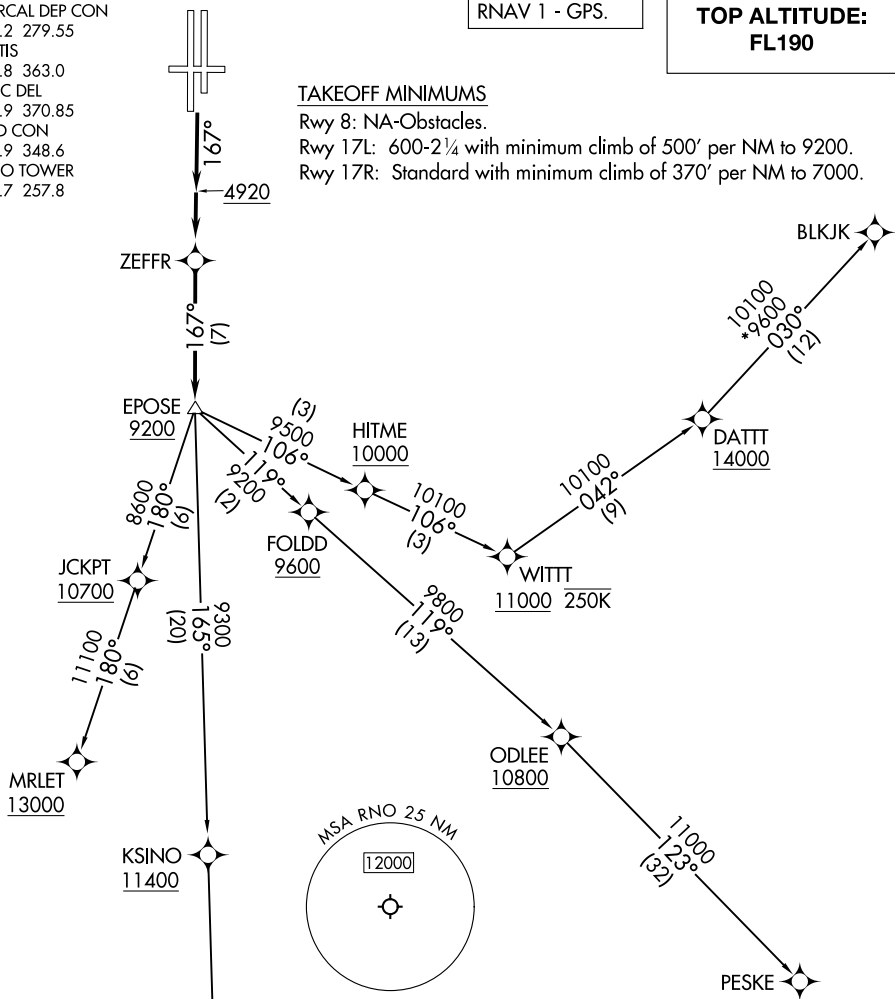
NORCAL DEP CON  
119.2 279.55  
D-ATIS  
135.8 363.0  
CLNC DEL  
124.9 370.85  
GND CON  
121.9 348.6  
RENO TOWER  
118.7 257.8

### TAKEOFF MINIMUMS

Rwy 8: NA-Obstacles.  
Rwy 17L: 600-2¼ with minimum climb of 500' per NM to 9200.  
Rwy 17R: Standard with minimum climb of 370' per NM to 7000.

SW-4, 11 JUL 2024 to 08 AUG 2024

SW-4, 11 JUL 2024 to 08 AUG 2024



**DEPARTURE ROUTE DESCRIPTION**

TAKEOFF RUNWAYS 17L/R: Climb on heading 167° to 4920, then direct ZEFFR, then on depicted route, thence . . . .  
. . . .maintain FL190 or assigned altitude. Expect filed altitude 5 minutes after departure.

BLKJK TRANSITION (ZEFFR9.BLKJK)  
DARBI TRANSITION (ZEFFR9.DARBI)  
MRLET TRANSITION (ZEFFR9.MRLET)  
PESKE TRANSITION (ZEFFR9.PESKE)

NOTE: Chart not to scale.

# ZEFFR NINE DEPARTURE (RNAV)

(ZEFFR9.ZEFFF) 11JUL24

RENO, NEVADA  
RENO/TAHOE INTL (RNO)