

HI-VOR Z RWY 32

VOR HDF 112.05	APCH CRS 315°	Rwy Idg 13,302 TDZE 1497 Arpt Elev 1536
--------------------------	-------------------------	--

AL-348 [USAF]

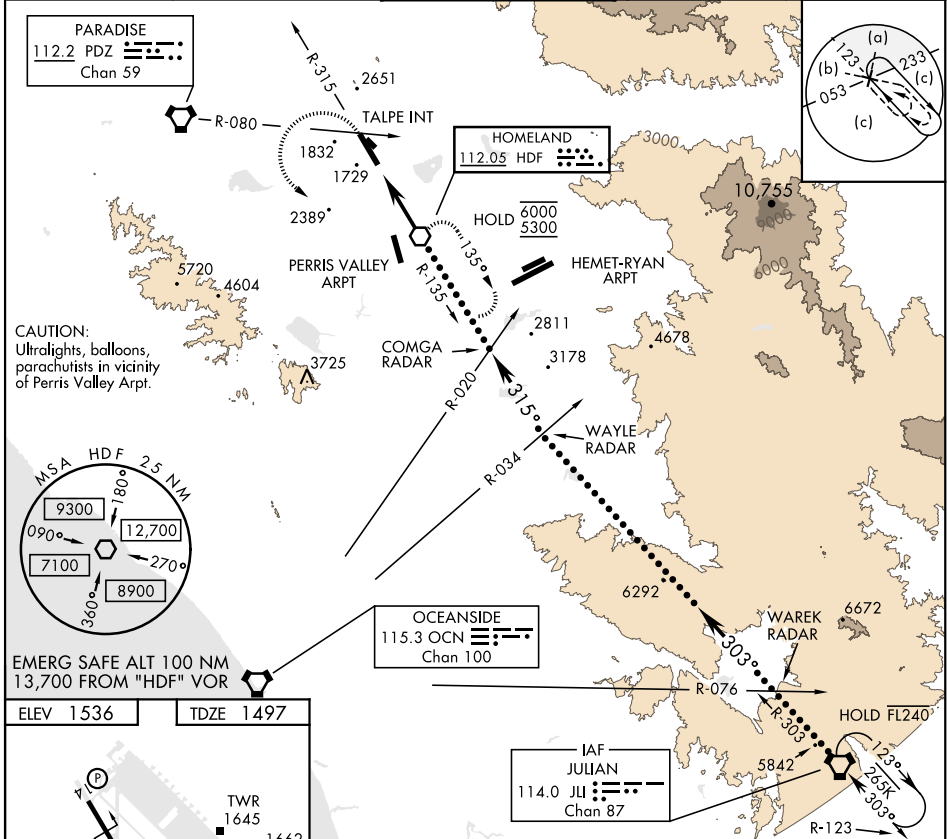
MARCH ARB (KRIV)

* When ALS inop, increase CAT CDE vis to 1½ miles.
 ** Circling not authorized NE of Rwy 14-32. Rapid rising terrain.

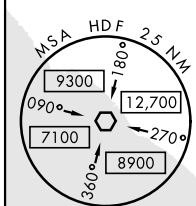
 ALSF-1

 MISSED APPROACH: Climb to 5300 on HDF VOR R-315 to TALPE, then turn left direct HDF, continue climb in hold to 5300.

ATIS 134.75 239.05	APP/DEP CON★ 133.5 306.975	TOWER 127.65 253.5	GND CON 121.75 335.8	CLNC DEL 127.775 268.7
------------------------------	--------------------------------------	------------------------------	--------------------------------	----------------------------------

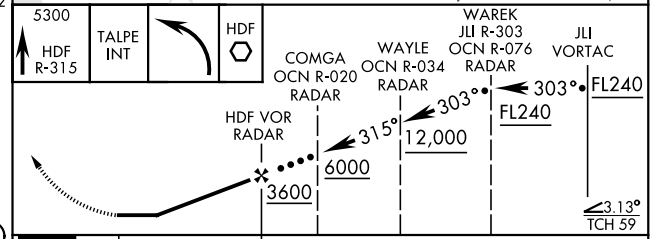
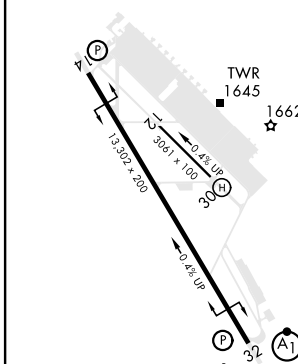


CAUTION:
Ultralights, balloons,
parachutists in vicinity
of Perris Valley Arpt.



EMERG SAFE ALT 100 NM
13,700 FROM "HDF" VOR

ELEV 1536	TDZE 1497
-----------	-----------



FAF to MAP 5.2 NM	CATEGORY		C	D	E
Knots 120 140 160 180 200	S-32 *	2040/60		543 (600-1½)	
Min:Sec 2:36 2:14 1:57 1:44 1:34	<input checked="" type="checkbox"/> CIRCLING **	2300-2¼ 764 (800-2¼)	2440-3 904 (1000-3)	2840-3 1304 (1400-3)	

HI-VOR Z RWY 32

SW-3, 11 JUL 2024 to 08 AUG 2024

SW-3, 11 JUL 2024 to 08 AUG 2024