

ILS or LOC X RWY 32

LOC I-RIV 110.1	APCH CRS 315°	Rwy Ldg 13,302 TDZE 1497 Arpt Elev 1536	AL-348 [USAF]	MARCH ARB (KRIV)
---------------------------	-------------------------	--	---------------	------------------

▽ *When ALS inop, increase RVR to 40 and vis to ¼ mile.
 **When ALS inop, increase CAT AB RVR to 55 and vis to 1 mile and CAT CDE RVR to 60 and vis to 1½ miles.

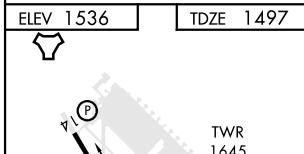
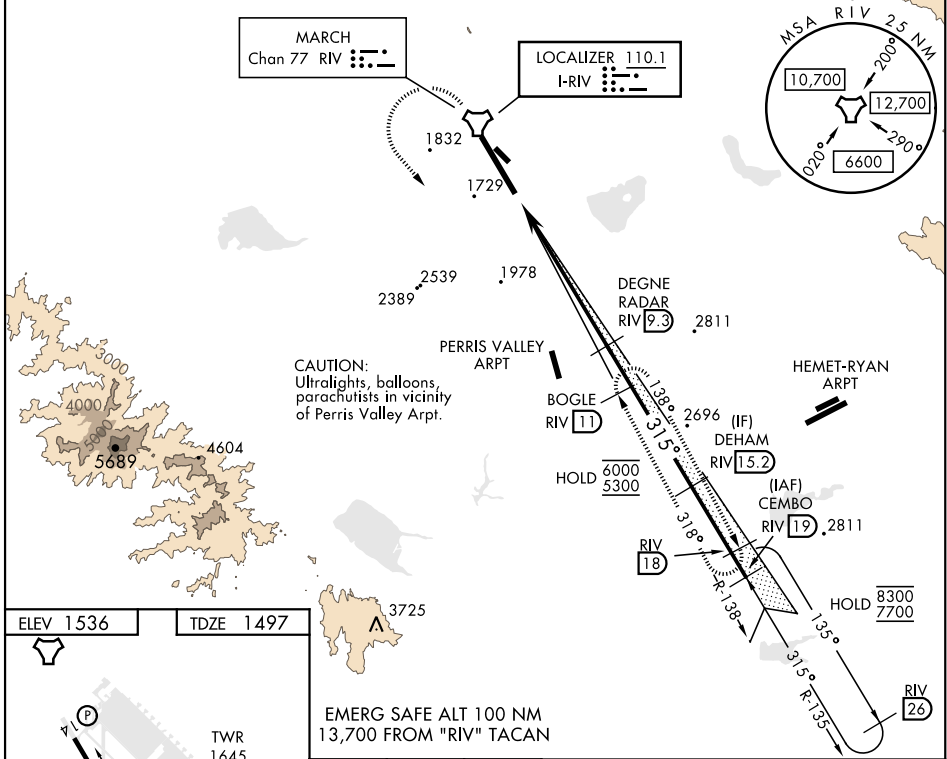


† MISSED APPROACH: Climb to 5300 direct RIV TACAN, then turn left to intercept RIV R-138 direct BOGLE, continue climb in hold to 5300.

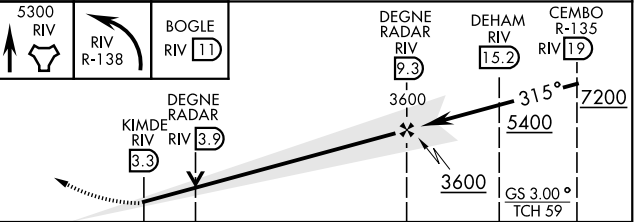
ATIS 134.75 239.05	APP/DEP CON ★ 133.5 306.975	TOWER 127.65 253.5	GND CON 121.75 335.8	CLNC DEL 127.775 268.7
------------------------------	---------------------------------------	------------------------------	--------------------------------	----------------------------------

*** Circling not authorized NE of Rwy 14-32. Rapid rising terrain.

† Missed approach requires use of RNAV or ATC monitoring.



EMERG SAFE ALT 100 NM
13,700 FROM "RIV" TACAN



CATEGORY S-ILS 32 * S-LOC 32 ** HIRL Rwy 14-32 FAF to MAP 5.9 NM Knots: 60 90 120 150 180 Min:Sec: 5:54 3:56 2:57 2:22 1:58	A 1900/24 403 (400-½)	B 2260-1 724 (800-1)	C 2300-2¼ 764 (800-2¼)	D 2440-3 904 (1000-3)	E 2840-3 1304 (1400-3)
---	--------------------------	-------------------------	---------------------------	--------------------------	---------------------------

ILS or LOC X RWY 32

SW-3, 11 JUL 2024 to 08 AUG 2024

SW-3, 11 JUL 2024 to 08 AUG 2024