

ILS or LOC Y RWY 32

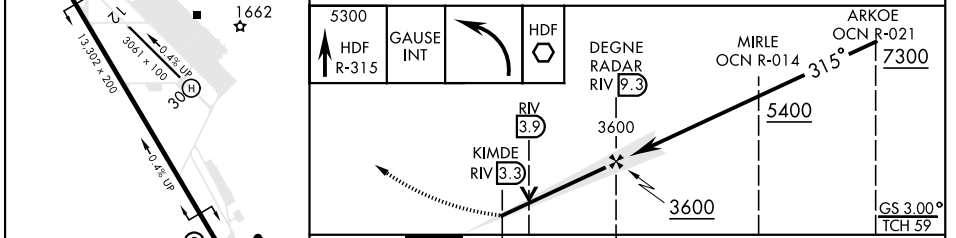
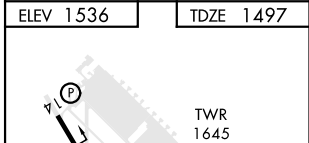
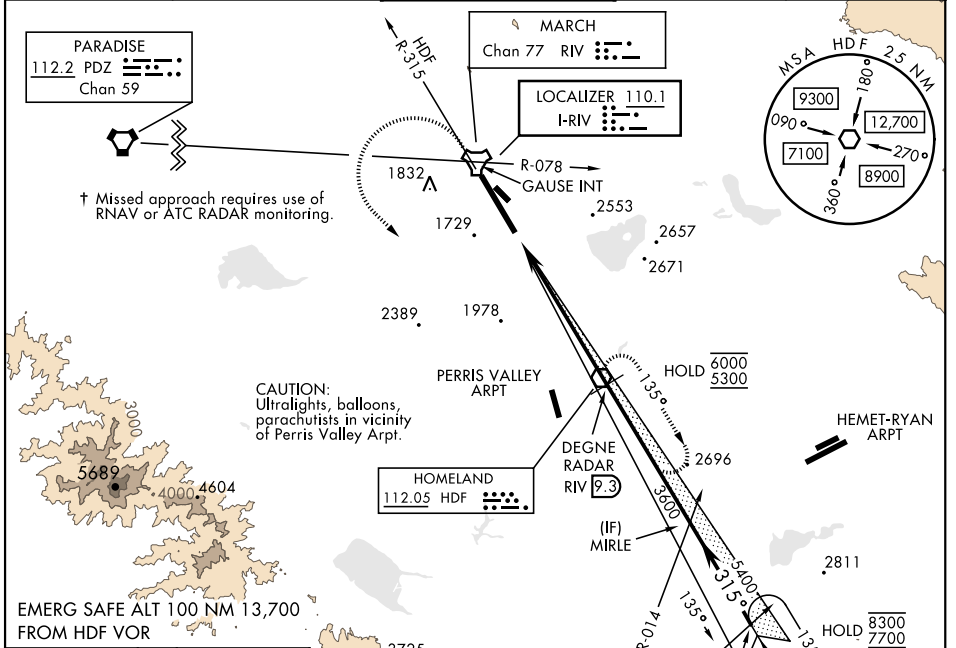
LOC I-RIV 110.1	APCH CRS 315°	Rwy Ldg 13,302 TDZE 1497 Arpt Elev 1536	AL-348 [USAF]	MARCH ARB (KRIV)
---------------------------	-------------------------	--	---------------	------------------

▼ *When ALS inop, increase RVR to 40 and vis to ¾ mile.
 **When ALS inop, increase CAT AB RVR to 55 and vis to 1 mile, CAT CDE RVR to 60 and vis to 1½ miles.
 ***Circling not authorized NE of Rwy 14-32. Rapid rising terrain.

ALSF-1

† MISSED APPROACH: Climb to 5300 on HDF VOR R-315 to GAUSE, turn left direct HDF continue climb in hold to 5300.

ATIS 134.75 239.05	APP/DEP CON ★ 133.5 306.975	TOWER 127.65 253.5	GND CON 121.75 335.8	CLNC DEL 127.775 268.7
------------------------------	---------------------------------------	------------------------------	--------------------------------	----------------------------------



ELEV 1536	TDZE 1497																																		
<table border="1"> <tr> <th>CATEGORY</th> <th>A</th> <th>B</th> <th>C</th> <th>D</th> <th>E</th> </tr> <tr> <td>S-ILS 32 *</td> <td colspan="2">1697/24</td> <td>200</td> <td colspan="2">(200-½)</td> </tr> <tr> <td>S-LOC 32 **</td> <td colspan="2">1900/24 403 (400-½)</td> <td colspan="3">1900/40 403 (400-¾)</td> </tr> <tr> <td rowspan="2">CIRCLING ***</td> <td>2180-1</td> <td>2260-1</td> <td>2300-2¼</td> <td>2440-3</td> <td>2840-3</td> </tr> <tr> <td>644 (700-1)</td> <td>724 (800-1)</td> <td>764 (800-2¼)</td> <td>904 (1000-3)</td> <td>1304 (1400-3)</td> </tr> </table>		CATEGORY	A	B	C	D	E	S-ILS 32 *	1697/24		200	(200-½)		S-LOC 32 **	1900/24 403 (400-½)		1900/40 403 (400-¾)			CIRCLING ***	2180-1	2260-1	2300-2¼	2440-3	2840-3	644 (700-1)	724 (800-1)	764 (800-2¼)	904 (1000-3)	1304 (1400-3)	TWR 1645 1662 3725 OCEANSIDE 115.3 OCN Chan 100 DEGNE RADAR RIV 9.3 MIRLE (IF) ARKOE (IAF) 7300 5400 3600 3600 0.5 NM 6 NM GS 3.00° TCH 59				
CATEGORY	A	B	C	D	E																														
S-ILS 32 *	1697/24		200	(200-½)																															
S-LOC 32 **	1900/24 403 (400-½)		1900/40 403 (400-¾)																																
CIRCLING ***	2180-1	2260-1	2300-2¼	2440-3	2840-3																														
	644 (700-1)	724 (800-1)	764 (800-2¼)	904 (1000-3)	1304 (1400-3)																														

ILS or LOC Y RWY 32

SW-3, 11 JUL 2024 to 08 AUG 2024

SW-3, 11 JUL 2024 to 08 AUG 2024