

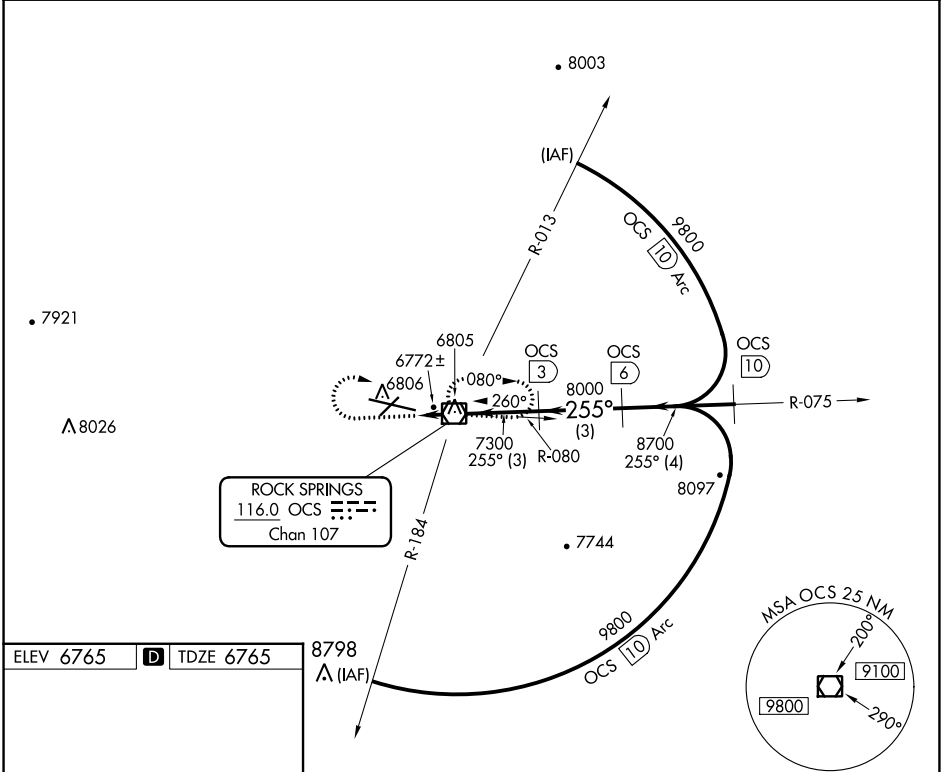
VOR/DME OCS <b>116.0</b> Chan <b>107</b>	APP CRS <b>255°</b>	Rwy Idg TDZE Apt Elev	<b>10000</b> <b>6765</b> <b>6765</b>
--	------------------------	-----------------------------	--

# VOR/DME RWY 27

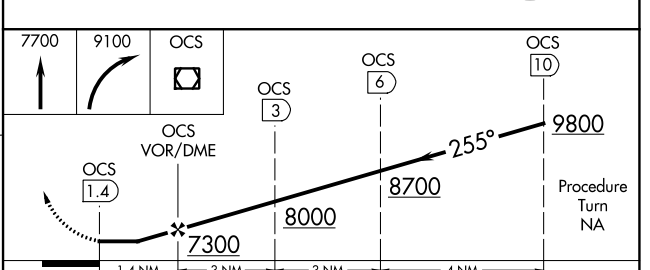
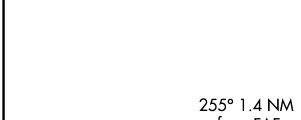
SOUTHWEST WYOMING RGNL (R.K.S)

<b>▼</b> Inoperative table does not apply to Cat D.	MALSR 	MISSED APPROACH: Climb to 7700, then climbing right turn to 9100 direct OCS VOR/DME and hold.
--	-----------	---

ASOS <b>118.375</b>	SALT LAKE CENTER <b>124.35 353.5</b>	UNICOM <b>122.8 (CTAF) ①</b>
------------------------	---	---------------------------------



ELEV 6765	<b>D</b>	TDZE 6765
-----------	----------	-----------



CATEGORY	A	B	C	D
S-27	7040-½ 275 (300-½)			7040-1 275 (300-1)
<b>C</b> CIRCLING	7140-1 375 (400-1)	7220-1 455 (500-1)	7220-1½ 455 (500-1½)	NA

MIRL Rwy 3-21  
HIRL Rwy 9-27 ①  
REIL Rwy 3 and 21 ①

NW-1, 11 JUL 2024 to 08 AUG 2024

NW-1, 11 JUL 2024 to 08 AUG 2024