

HI-ILS Y or LOC Y RWY 21

LOC/DME I-ROW 109.9 Chan 36	APCH CRS 215°	Rwy ldg 13,001 TDZE 3633 Arprt Elev 3671
---	-------------------------	---

AL-354 [USAF]

ROSWELL AIR CENTER (KROW)

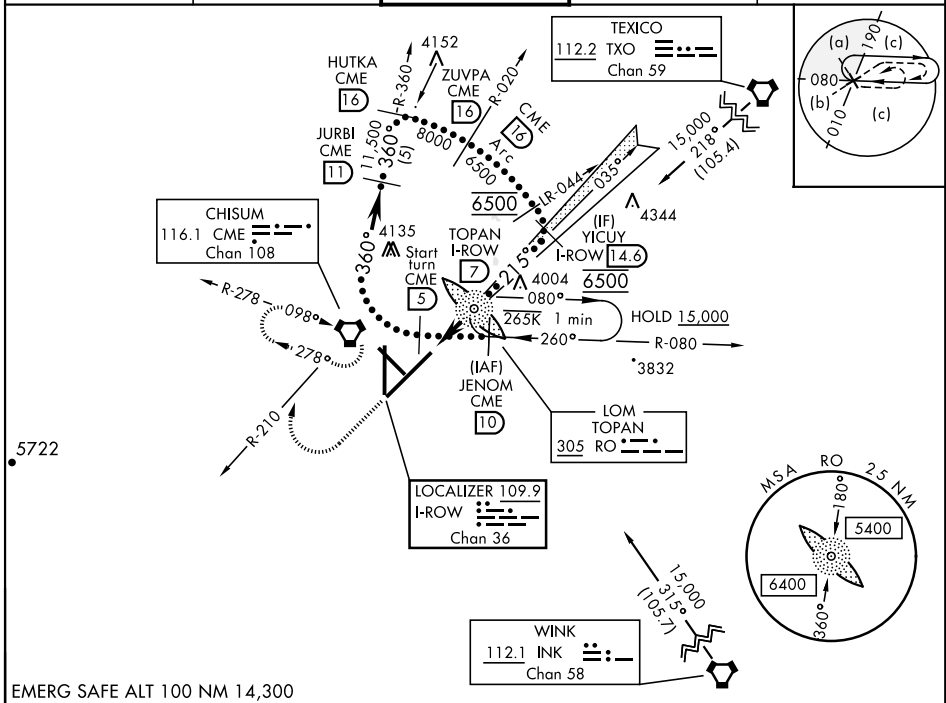
DME required.



MISSED APPROACH: Climb to 5000 then climbing right turn to 6500 on CME VORTAC R-210 to CME and hold, continue climb-in-hold to 6500.

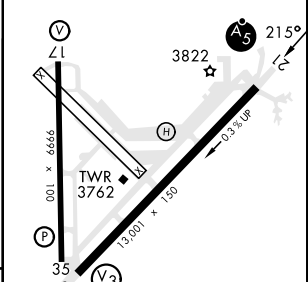
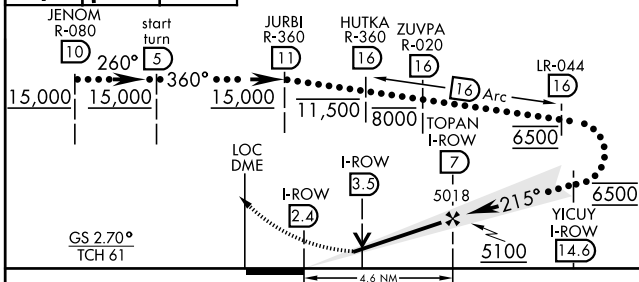
▲NA * When ALS inop, increase CAT E vis to 3/4 mile.
** When ALS inop, increase CAT E vis to 1/8 miles.

ATIS 128.45 306.2	APP CON 119.6 239.0	TOWER * 118.5 (CTAF) 0 233.7	GND CON 121.9 348.6	CLNC DEL 132.875 282.25
-----------------------------	-------------------------------	--	-------------------------------	-----------------------------------



EMERG SAFE ALT 100 NM 14,300

5000	6500	CME	Use I-ROW DME when on localizer course.	ELEV 3671	TDZE 3633
------	------	-----	---	-----------	-----------



CATEGORY	C	D	E
S-ILS 21 *	3833-1/2	200	(200-1/2)
S-LOC 21 **	4020-5/8	387	(400-3/8)
CIRCLING	4140-1 1/2 469 (500-1 1/2)	4300-2 629 (700-2)	4400-2 1/2 729 (800-2 1/2)

MIRL Rwy 3-21 and 17-35					
FAF to MAP 4.6 NM					
Knots	60	90	120	150	180
Min:Sec	4:36	3:04	2:18	1:50	1:32

HI-ILS Y or LOC Y RWY 21

SW-1, 11 JUL 2024 to 08 AUG 2024

SW-1, 11 JUL 2024 to 08 AUG 2024