

LOC/DME I-ROW 109.9 Chan 36	APP CRS 035°	Rwy Idg 13000 TDZE 3667 Apt Elev 3671
---	------------------------	--

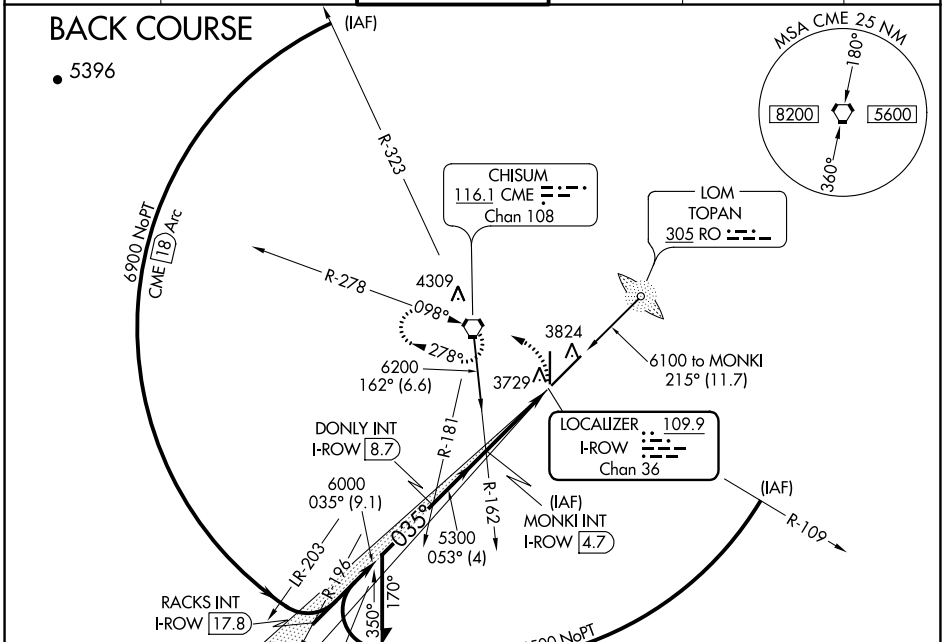
LOC BC RWY 3

ROSWELL AIR CENTER (ROW)

ASR

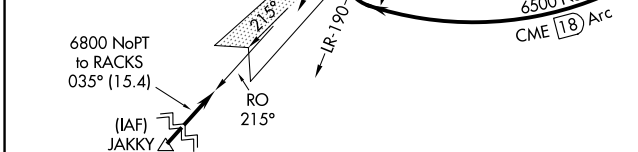
MISSED APPROACH: Climbing left turn to 6000 direct CME VORTAC and hold.

ATIS 128.45 306.2	ROSWELL APP CON* 119.6 239.0	ROSWELL TOWER* 118.5 (CTAF) 233.7	GND CON 121.9 348.6	CLNC DEL 132.875 282.25	UNICOM 122.95
-----------------------------	--	---	-------------------------------	-----------------------------------	-------------------------

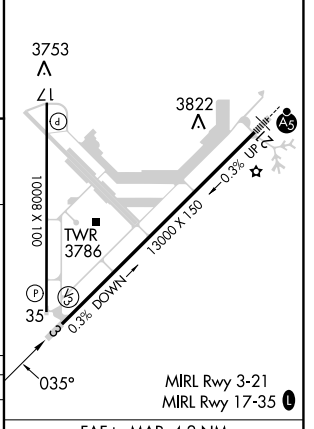


SW-1, 11 JUL 2024 to 08 AUG 2024

SW-1, 11 JUL 2024 to 08 AUG 2024



ELEV 3671	D TDZE 3667
-----------	--------------------



Use I-ROW DME when on localizer course.	MONKI INT I-ROW 4.7	6000 CME
Remain within 10 NM	DONLY INT I-ROW 8.7	
Disregard glide slope indications.	5300	3.00° TCH 50
	4 NM	4.2 NM

CATEGORY	A	B	C	D
S-3	4100-1	433 (500-1)	4100-1¼ 433 (500-1¼)	4100-1½ 433 (500-1½)
CIRCLING	4140-1	469 (500-1)	4140-1½ 469 (500-1½)	4300-2 629 (700-2)

FAF to MAP 4.2 NM					
Knots	60	90	120	150	180
Min:Sec	4:12	2:48	2:06	1:41	1:24