

VOR/DME MCC <b>109.2</b> Chan <b>29</b>	APP CRS <b>333°</b>	Rwy Idg <b>10599</b> TDZE <b>72</b> Apt Elev <b>77</b>
---	------------------------	--

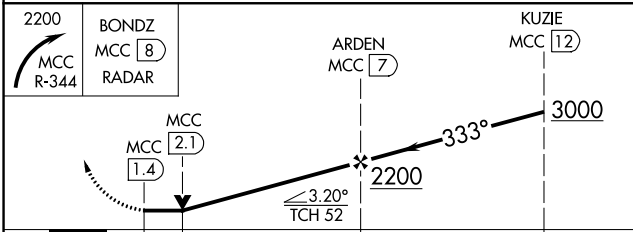
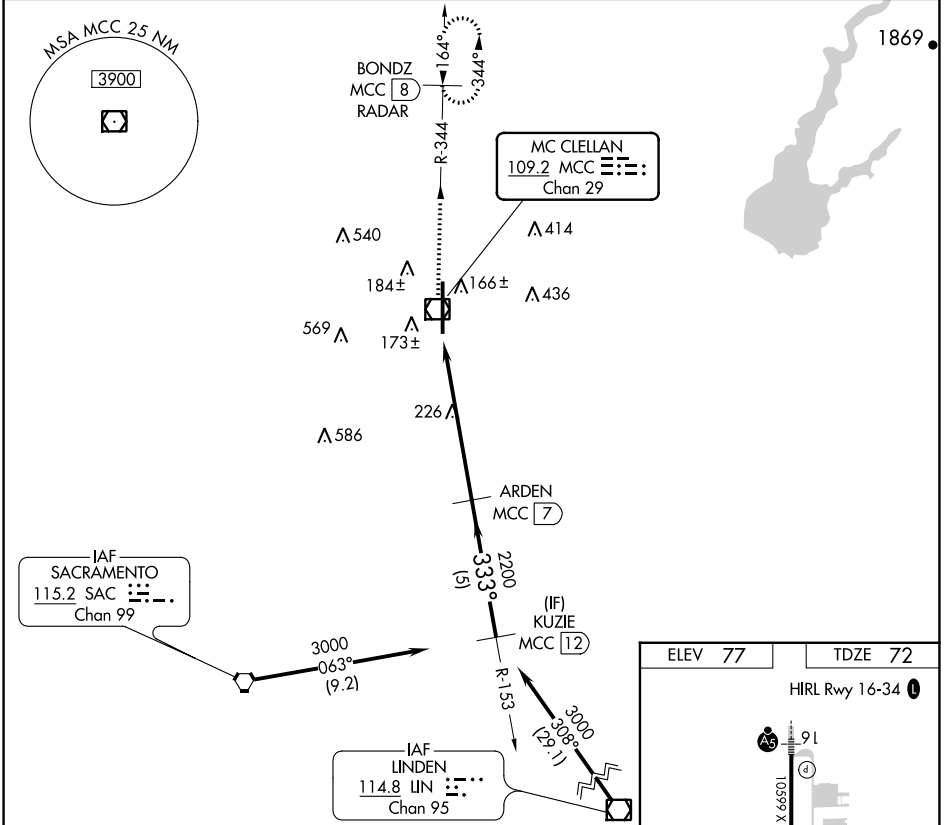
# VOR/DME RWY 34

MC CLELLAN AIRFIELD (MCC)

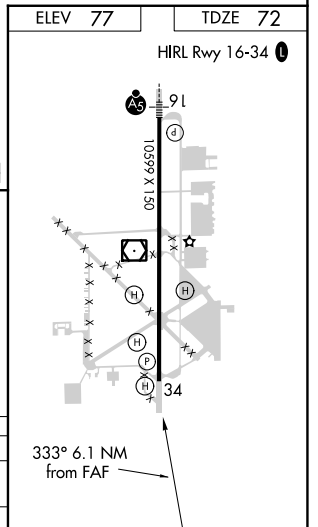
**NA** VDP NA when using Sacramento Intl altimeter setting. When local altimeter setting not received, use Sacramento Intl altimeter setting and increase all MDAs 40 feet.

**MISSED APPROACH:** Climbing right turn to 2200 via MCC R-344 to BONDZ/MCC 8 DME/RADAR and hold.

AWOS-3 <b>125.975</b>	NORCAL APP CON <b>127.4 317.5</b>	CLNC DEL <b>119.825</b>	UNICOM <b>122.975 (CTAF) 0</b>
--------------------------	--------------------------------------	----------------------------	-----------------------------------



CATEGORY	A	B	C	D
S-34	500-1	428 (500-1)	500-1½ 428 (500-1½)	500-1½ 428 (500-1½)
CIRCLING	NA			



SW-2, 11 JUL 2024 to 08 AUG 2024

SW-2, 11 JUL 2024 to 08 AUG 2024