

VORTAC SNS <b>117.3</b> Chan <b>120</b>	APP CRS <b>122°</b>	Rwy Idg TDZE <b>84</b> Apt Elev <b>84</b>	<b>4825</b>
---	------------------------	---	-------------

# VOR RWY 13

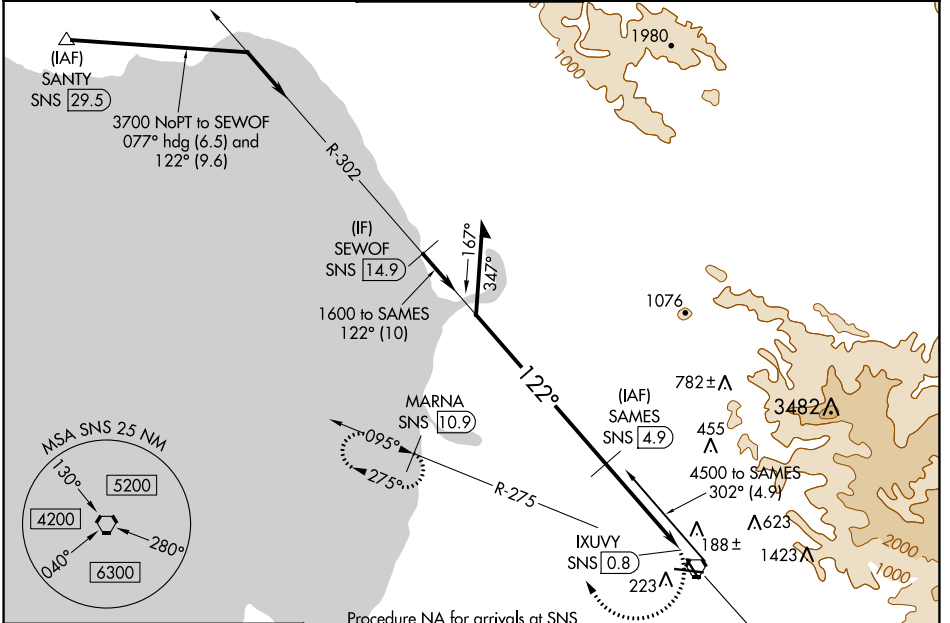
SALINAS MUNI (SNS)

**DME required.**

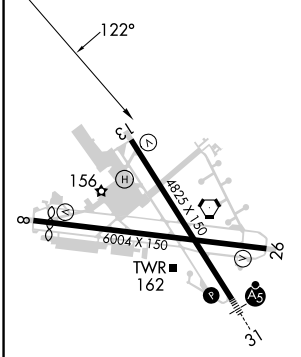
**▼** Rwy 13 helicopter visibility reduction below 1 SM NA. Circling NA for Cat C northeast of Rwy 13 and north of Rwy 26 and NA for Cat D northeast of Rwy 13-31.

**▲** MISSED APPROACH: Climbing right turn to 3000 on SNS VORTAC R-275 to MARNA/SNS 10.9 DME and hold, continue climb-in-hold to 3000.

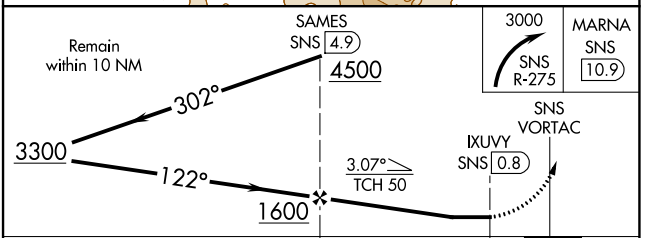
ATIS <b>124.85</b>	NORCAL APP CON <b>133.0 251.15</b>	SALINAS TOWER* <b>119.525 (CTAF) 239.3</b>	GND CON <b>121.7</b>	UNICOM <b>123.0</b>
-----------------------	---------------------------------------	---	-------------------------	------------------------



ELEV <b>84</b>	TDZE <b>84</b>
----------------	----------------



Procedure NA for arrivals at SNS VORTAC on V25-87 southeast bound and V230 east bound



CATEGORY	A	B	C	D
S-13	600-1	516 (600-1)	600-1 <sup>3</sup> / <sub>8</sub> 516 (600-1 <sup>3</sup> / <sub>8</sub> )	760-1 <sup>7</sup> / <sub>8</sub> 676 (700-1 <sup>7</sup> / <sub>8</sub> )
CIRCLING	600-1	516 (600-1)	800-2 716 (800-2)	960-2 <sup>3</sup> / <sub>4</sub> 876 (900-2 <sup>3</sup> / <sub>4</sub> )

HIRL Rwy 13-31  
MIRL Rwy 8-26  
REIL Rwy 13 and 26

SW-2, 11 JUL 2024 to 08 AUG 2024

SW-2, 11 JUL 2024 to 08 AUG 2024