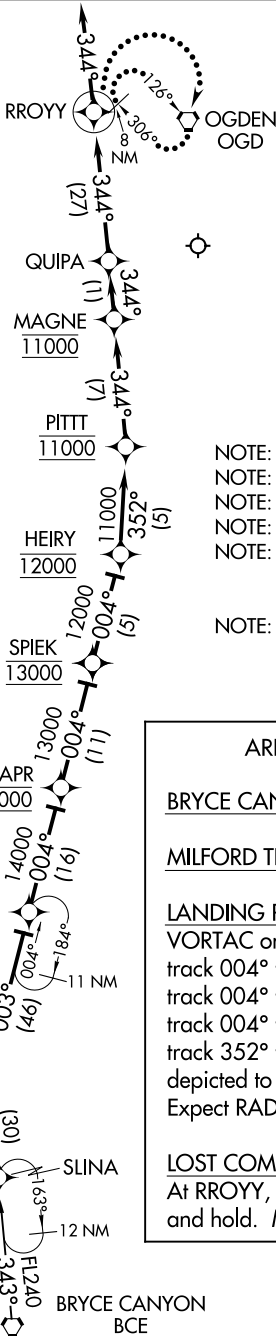


DELTA SIX ARRIVAL (RNAV)

AL-365 (FAA)

SALT LAKE CITY INTL (SLC)
SALT LAKE CITY, UTAH

SALT LAKE CITY APP CON
128.1 307.05
D-ATIS
124.75 125.625



- NOTE: RADAR required.
- NOTE: RNAV 1.
- NOTE: DME/DME/IRU or GPS required.
- NOTE: Turbojet aircraft only.
- NOTE: BCE TRANSITION: For non-GPS equipped aircraft, BVL, FFU, TCH, and OGD DMEs must be operational.
- NOTE: MLF TRANSITION: For non-GPS equipped aircraft, BVL, TCH, and OGD DMEs must be operational.

ARRIVAL ROUTE DESCRIPTION

BRYCE CANYON TRANSITION (BCE.DELTA6)

MILFORD TRANSITION (MLF.DELTA6)

LANDING RUNWAYS 16L/R, 17: From DTA VORTAC on track 003° to JAMMN, then on track 004° to cross DRAPR at 14000, then on track 004° to cross SPIEK at 13000, then on track 004° to cross HEIRY at 12000, then on track 352° to cross PITTT at 11000, then as depicted to RROYY, then on heading 344°. Expect RADAR vectors to final approach course.

LOST COMMUNICATIONS:

At RROYY, turn right direct OGD VORTAC and hold. Maintain 11000.

NOTE: Chart not to scale.

SW-4, 11 JUL 2024 to 08 AUG 2024

SW-4, 11 JUL 2024 to 08 AUG 2024

DELTA SIX ARRIVAL (RNAV)

(DTA.DELTA6) 12AUG21

SALT LAKE CITY, UTAH
SALT LAKE CITY INTL (SLC)