

LOC/DME I-MOY 109.5 Chan 32	APP CRS 164°	Rwy Idg 12002 TDZE 4227 Apt Elev 4227
--	------------------------	--

ILS RWY 16L (CAT II & III)

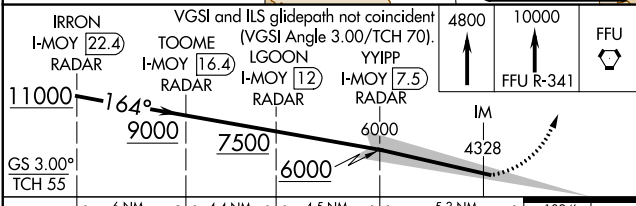
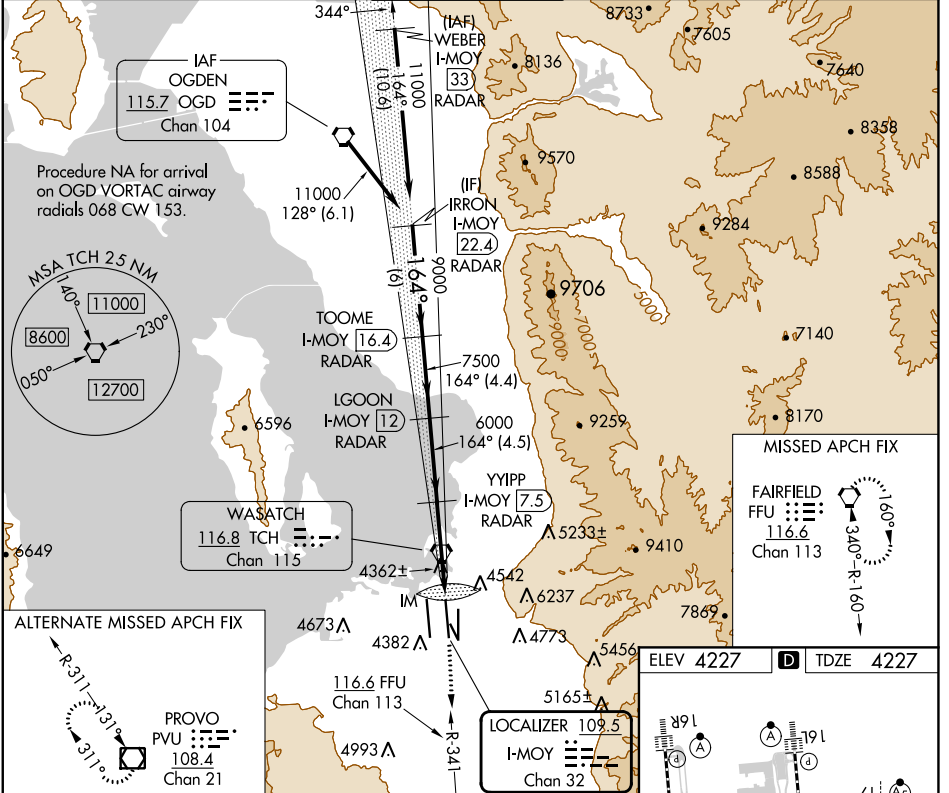
SALT LAKE CITY INTL (SLC)

Simultaneous approach authorized. DME or RADAR required.
 CAT II: RVR 1000 authorized with specific OPSPEC, MSPEC, or LOA approval and use of autoland or HUD to touchdown.

ALS-F-2

MISSED APPROACH: Climb to 4800 then climb to 10000 on FFU VORTAC R-341 to FFU VORTAC and hold.

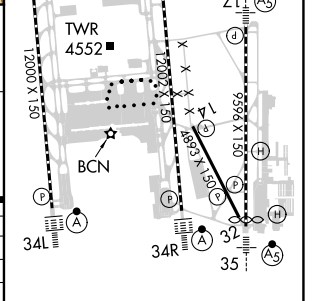
D-ATIS 124.75 125.625	SALT LAKE CITY APP CON 125.7 284.6	SALT LAKE CITY TOWER 119.05 257.8	GND CON 123.775 348.6	CLNC DEL 127.3 379.975	CPDLC
---------------------------------	--	---	---------------------------------	----------------------------------	-------



IRRON I-MOY 22.4 RADAR	TOOME I-MOY 16.4 RADAR	LGOON I-MOY 12 RADAR	YVIPP I-MOY 7.5 RADAR	IM	4800	10000	FFU
VGSI and ILS glidepath not coincident (VGSI Angle 3.00/TCH 70).					4800	10000	FFU R-341
GS 3.00° TCH 55	6 NM	4.4 NM	4.5 NM	5.3 NM	1024'		

CATEGORY	A	B	C	D
S-ILS 16L	CAT II RA 108/12 100 DA 4327			
S-ILS 16L	CAT IIIa RVR 07			
S-ILS 16L	CAT IIIb RVR 03			
S-ILS 16L	CAT IIIc NA			

CATEGORY II & III ILS - SPECIAL AIRCREW & AIRCRAFT CERTIFICATION REQUIRED



HIRL all Rwws
 TDZ/CL Rwws 16L, 16R, 17, 34L, 34R and 35

SW-4, 11 JUL 2024 to 08 AUG 2024

SW-4, 11 JUL 2024 to 08 AUG 2024