

LOC/DME I-UAT <b>111.9</b> Chan <b>56</b>	APP CRS <b>164°</b>	Rwy ldg <b>12000</b> TDZE <b>4223</b> Apt Elev <b>4227</b>
---	------------------------	---

# ILS RWY 16R (CAT II & III)

SALT LAKE CITY INTL (SLC)

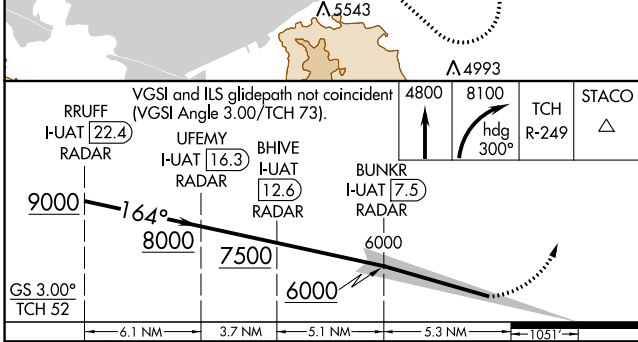
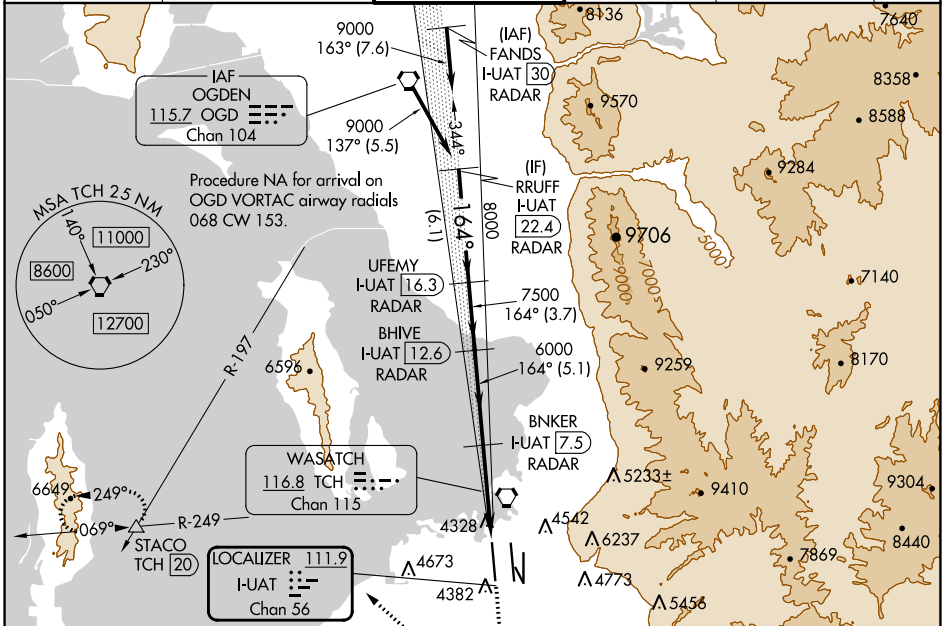
DME or RADAR required.

Simultaneous approach authorized.  
CAT II: RVR 1000 authorized with specific OPSPEC, MSPEC, or LOA approval and use of autoland or HUD to touchdown.

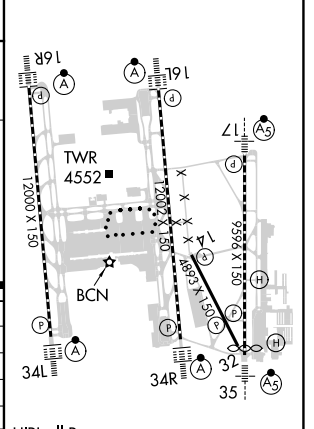
ALSF-2

MISSED APPROACH: Climb to 4800 then climbing right turn to 8100 on heading 300° and on TCH VORTAC R-249 to STACO INT/TCH 20 DME and hold.

D-ATIS <b>124.75 125.625</b>	SALT LAKE CITY APP CON <b>125.7 284.6</b>	SALT LAKE CITY TOWER <b>132.65 336.4</b>	GND CON <b>123.775 348.6</b>	CLNC DEL <b>127.3 379.975</b>	CPDLC
---------------------------------	--	---	---------------------------------	----------------------------------	-------



ELEV 4227	D	TDZE 4223
-----------	---	-----------



CATEGORY	A	B	C	D
S-ILS 16R	CAT II RA 108/12 100 DA 4323			
S-ILS 16R		Cat IIIa	RVR 07	
S-ILS 16R		Cat IIIb	RVR 03	
S-ILS 16R		Cat IIIc	NA	

## CATEGORY II & III ILS - SPECIAL AIRCREW & AIRCRAFT CERTIFICATION REQUIRED

HIRL all Rwws  
TDZ/CL Rwws 16L, 16R, 17, 34L, 34R, and 35

SW-4, 11 JUL 2024 to 08 AUG 2024

SW-4, 11 JUL 2024 to 08 AUG 2024