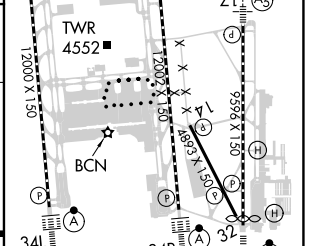
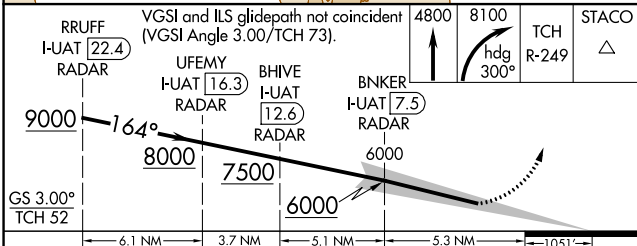
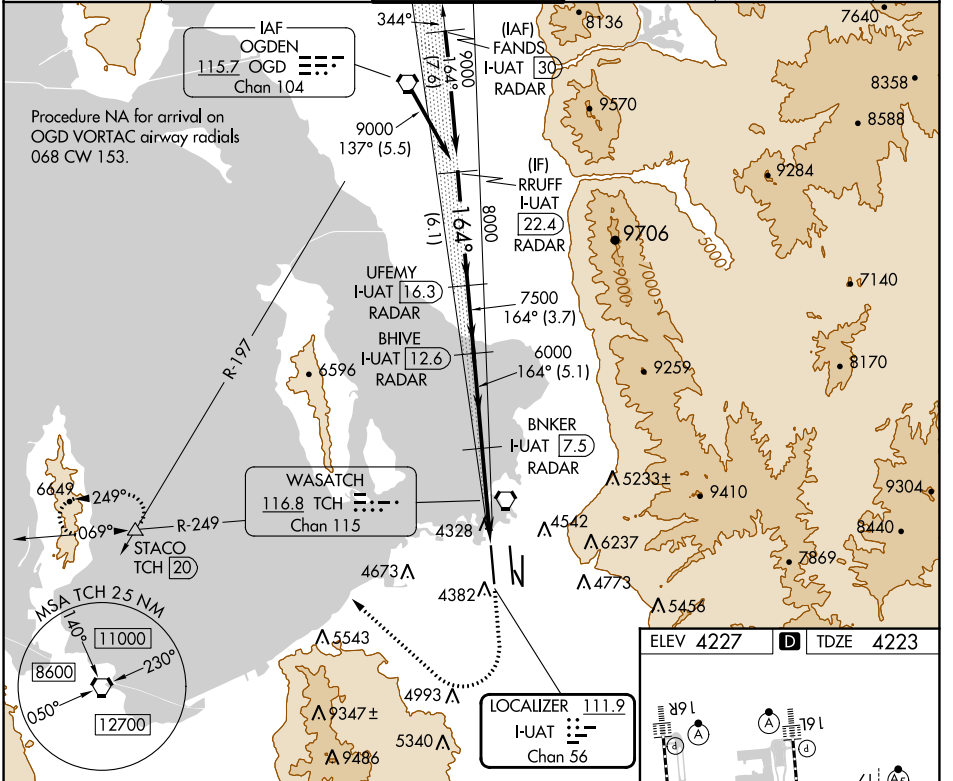


LOC/DME I-UAT 111.9 Chan 56	APP CRS 164°	Rwy ldg 12000
	TDZE 4223	
	Apt Elev 4227	

ILS RWY 16R (SA CAT I)

SALT LAKE CITY INTL (SLC)

DME or RADAR required.		ALSIF-2	MISSED APPROACH: Climb to 4800 then climbing right turn to 8100 on heading 300° and on TCH VORTAC R-249 to STACO INT/TCH 20 DME and hold.		
▼ Simultaneous approach authorized. Requires specific OPSPEC, MSPEC, or LOA approval and use of HUD to DH.		(A)			
D-ATIS 124.75 125.625	SALT LAKE CITY APP CON 125.7 284.6	SALT LAKE CITY TOWER 132.65 336.4	GND CON 123.775 348.6	CLNC DEL 127.3 379.975	CPDLC



RRUFF I-UAT 22.4 RADAR	VFSL and ILS glidepath not coincident (VFSL Angle 3.00/TCH 73).	4800	8100	TCH	STACO
9000	UFEMY I-UAT 16.3 RADAR	↑	hdg 300°	R-249	△
8000	BHIVE I-UAT 12.6 RADAR				
7500	BNKER I-UAT 7.5 RADAR				
6000					
6.1 NM	3.7 NM	5.1 NM	5.3 NM	1051'	
CATEGORY	A	B	C	D	
S-ILS 16R	RA 157/14 150 DA 4373				

HIRL all Rwws
TDZ/CL Rwws 16L, 16R, 17, 34L, 34R, and 35

SW-4, 11 JUL 2024 to 08 AUG 2024

SW-4, 11 JUL 2024 to 08 AUG 2024