

LOC/DME I-UUJH 111.9 Chan 56	APP CRS 344°	Rwy Idg TDZE 12000 4229 Apt Elev 4231
---	------------------------	--

ILS RWY 34L (SA CAT I)

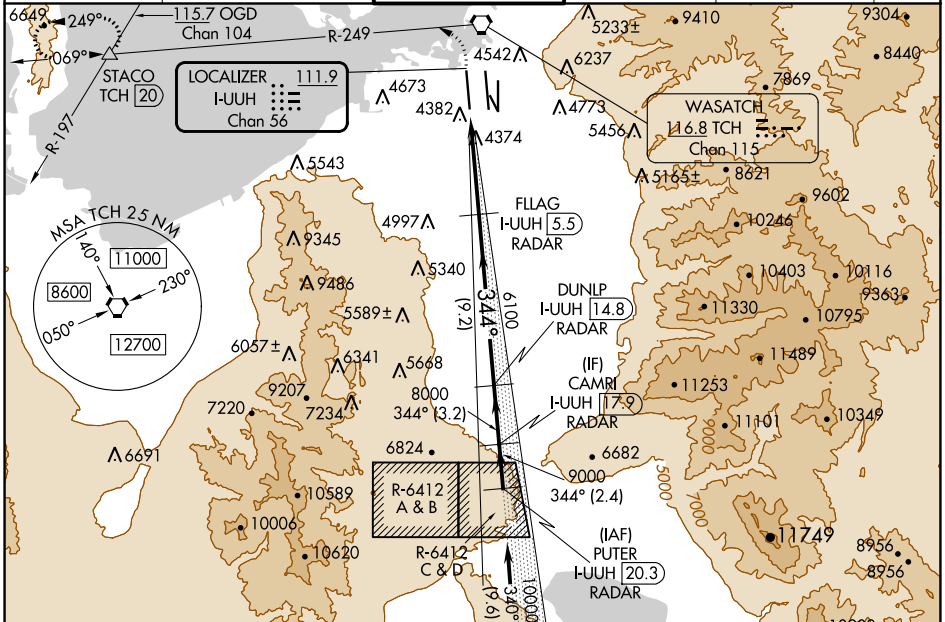
SALT LAKE CITY INTL (SLC)

RADAR required for arrivals at PUTER. DME or RADAR required.

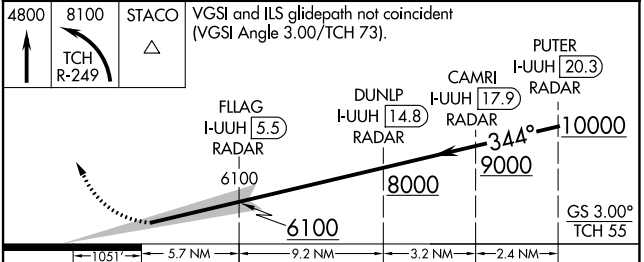
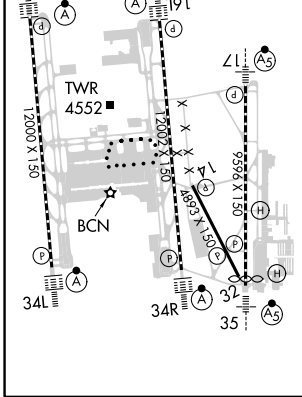
ALSF-2

MISSED APPROACH: Climb to 4800 then climbing left turn to 8100 on TCH VORTAC R-249 to STACO INT/TCH 20 DME and hold.

D-ATIS 124.75 125.625	SALT LAKE CITY APP CON 125.7 284.6	SALT LAKE CITY TOWER 132.65 336.4	GND CON 123.775 348.6	CLNC DEL 127.3 379.975	CPDLC
---------------------------------	--	---	---------------------------------	----------------------------------	-------



ELEV 4231	TDZE 4229
HIRL all Rwys TDZ/CL Rwys 16L, 16R, 17, 35, 34L, and 34R	



CATEGORY	A	B	C	D
S-ILS 34L	RA 158/14 150 DA 4379			

SA CATEGORY I ILS - SPECIAL AIRCREW & AIRCRAFT CERTIFICATION REQUIRED

SW-4, 11 JUL 2024 to 08 AUG 2024

SW-4, 11 JUL 2024 to 08 AUG 2024