

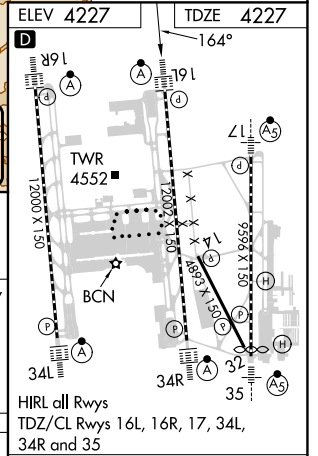
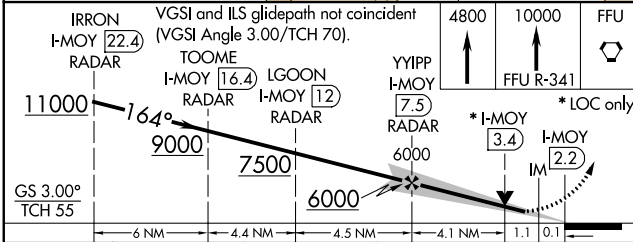
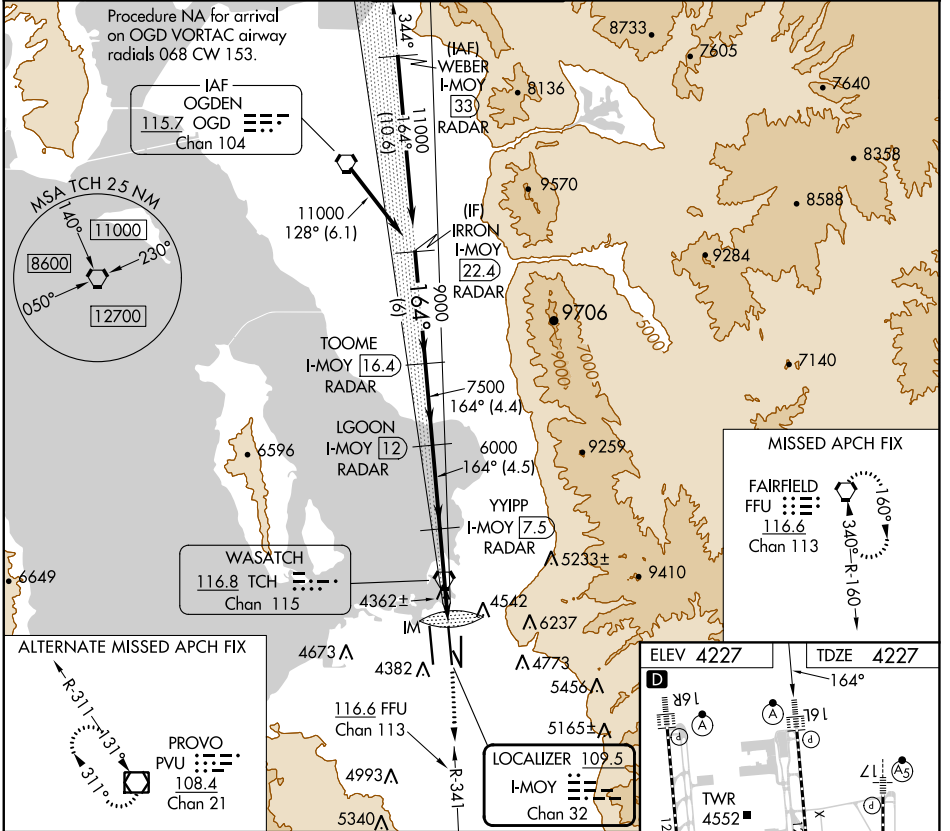
LOC/DME I-MOY 109.5 Chan 32	APP CRS 164°	Rwy Idg 12002 TDZE 4227 Apt Elev 4227
---	------------------------	--

ILS or LOC RWY 16L

SALT LAKE CITY INTL (SLC)

Simultaneous approach authorized. DME or RADAR required.	ALSIF-2	MISSED APPROACH: Climb to 4800 then climb to 10000 on FFU VORTAC R-341 to FFU VORTAC and hold.

D-ATIS 124.75 125.625	SALT LAKE CITY APP CON 125.7 284.6	SALT LAKE CITY TOWER 119.05 257.8	GND CON 123.775 348.6	CLNC DEL 127.3 379.975	CPDLC
---------------------------------	--	---	---------------------------------	----------------------------------	-------



CATEGORY	A	B	C	D
S-ILS 16L		4427/18	200 (200-½)	
S-LOC 16L	4680/24	453 (500-½)	4680/40 453 (500-¾)	4680/50 453 (500-1)

Knots	60	90	120	150	180
Min:Sec	5:18	3:32	2:39	2:07	1:46

SW-4, 11 JUL 2024 to 08 AUG 2024

SW-4, 11 JUL 2024 to 08 AUG 2024