

# JAMMN FIVE ARRIVAL

AL-365 (FAA)

SALT LAKE CITY APP CON  
128.1 307.05

OGDEN  
115.7 OGD  
Chan 104

WASATCH  
116.8 TCH  
Chan 115

NOTE: After CHHIP, fly heading 343° for vectors to ILS or LOC RWY 16R or VISUAL RWY 16R approach.

FAIRFIELD  
116.6 FFU  
Chan 113

DELTA  
116.1 DTA  
Chan 108

MILFORD  
112.1 MLF  
Chan 58

BRYCE CANYON  
112.8 BCE  
Chan 75

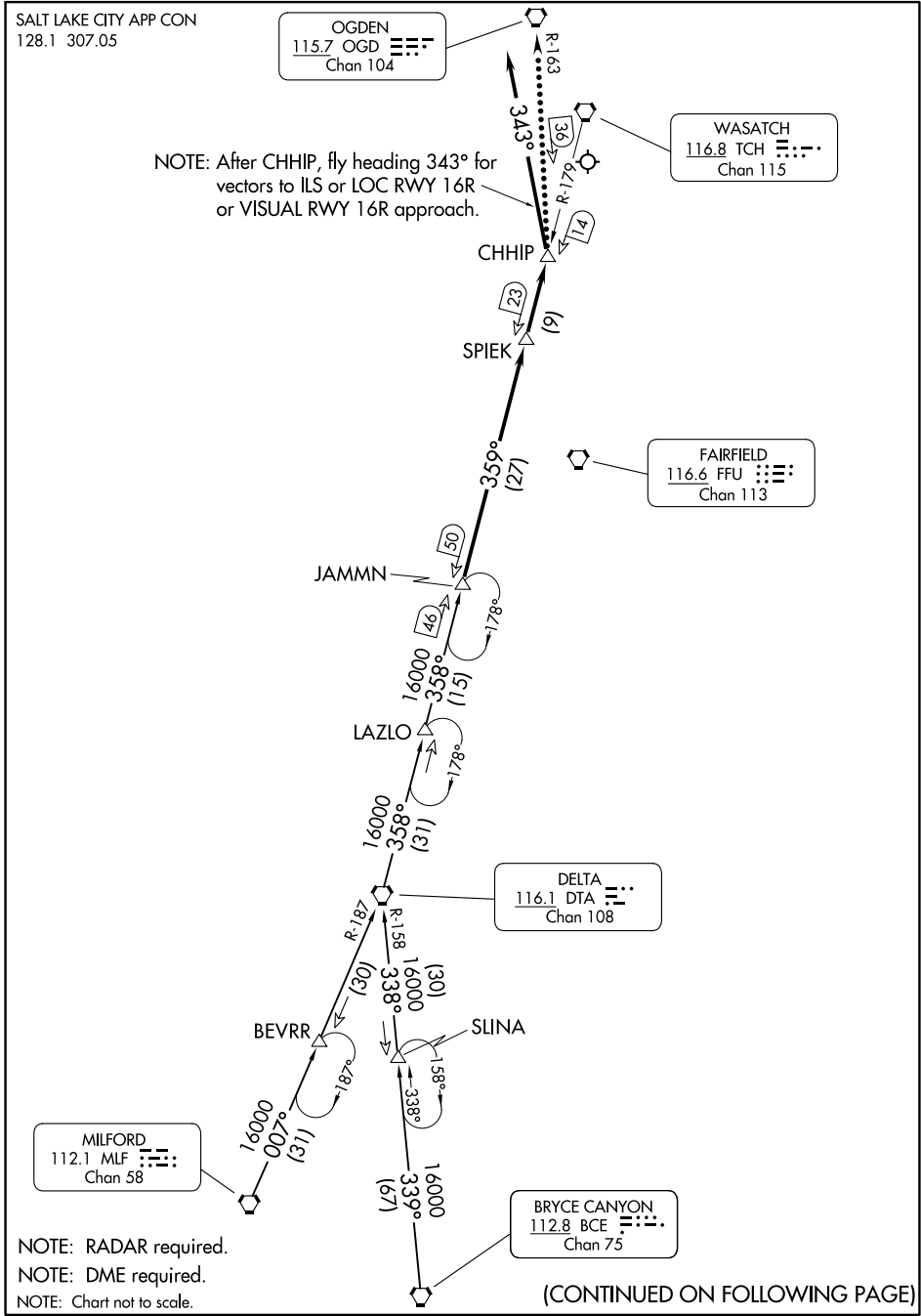
NOTE: RADAR required.  
NOTE: DME required.  
NOTE: Chart not to scale.

(CONTINUED ON FOLLOWING PAGE)

# JAMMN FIVE ARRIVAL

SW-4, 11 JUL 2024 to 08 AUG 2024

SW-4, 11 JUL 2024 to 08 AUG 2024



ARRIVAL ROUTE DESCRIPTION

BRYCE CANYON TRANSITION (BCE.JAMMN5): From over BCE VORTAC via BCE R-339 and DTA R-158 to DTA VORTAC. Then via DTA R-358 to JAMMN. Thence. . . .

MILFORD TRANSITION (MLF.JAMMN5): From over MLF VORTAC via MLF R-007 and DTA R-187 to DTA VORTAC. Then via DTA R-358 to JAMMN. Thence. . . .

. . . .From JAMMN on TCH VORTAC R-179 to CHHIP, then fly heading 343° for vectors to ILS or LOC RWY 16R or VISUAL Rwy 16R approach.

LOST COMMUNICATIONS

In the event of lost communications, at CHHIP proceed direct OGD VORTAC. Maintain 11000 until OGD VORTAC.

SW-4, 11 JUL 2024 to 08 AUG 2024

SW-4, 11 JUL 2024 to 08 AUG 2024