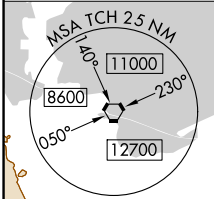
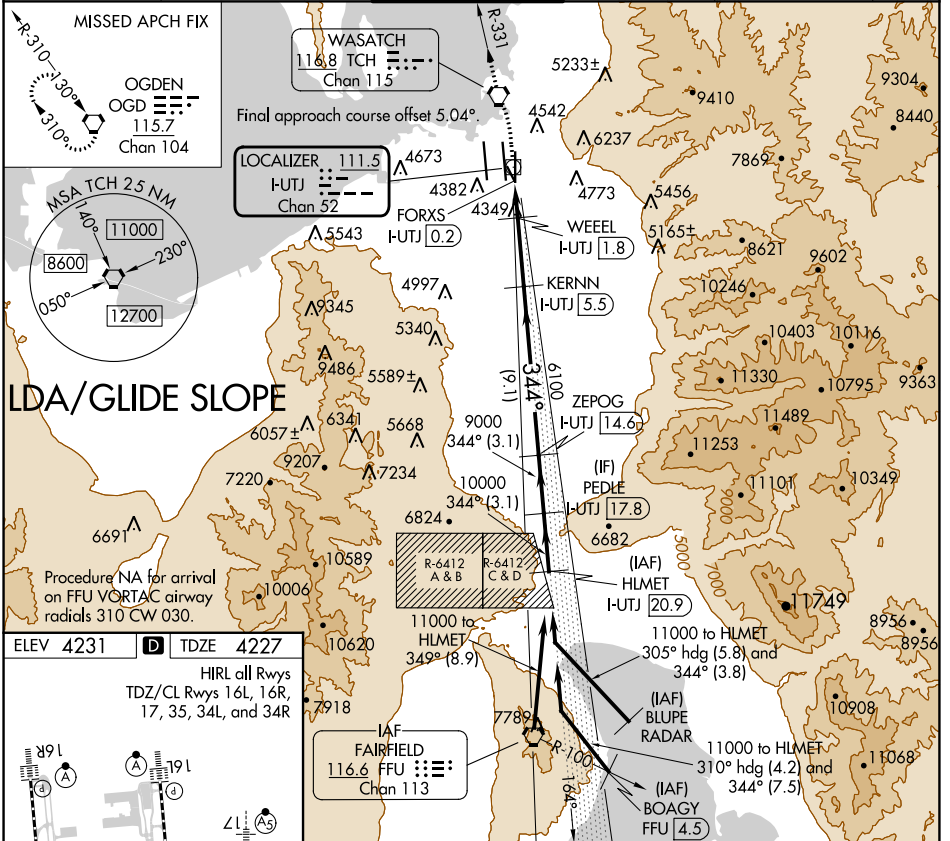


LOC/DME I-UTJ 111.5	APP CRS 344°	Rwy Idg 9272
Chan 52		TDZE 4227
		Apt Elev 4231

LDA RWY 35

SALT LAKE CITY INTL (SLC)

DME required.		MALS/R	MISSED APPROACH: Climb to 4800 then climbing left turn to 9000 direct TCH VORTAC and on TCH VORTAC R-331 to OGD VORTAC and hold.					
Simultaneous approach authorized. For inop ALS, increase S-LDA/GS 35 Cat E visibility to RVR 4000, increase S-LDA 35 Cat E visibility to 1/4 SM.			D-ATIS 124.75 125.625	SALT LAKE CITY APP CON 125.7 284.6	SALT LAKE CITY TOWER 118.3 257.8	GND CON 121.9 348.6	CLNC DEL 127.3 379.975	CPDLC

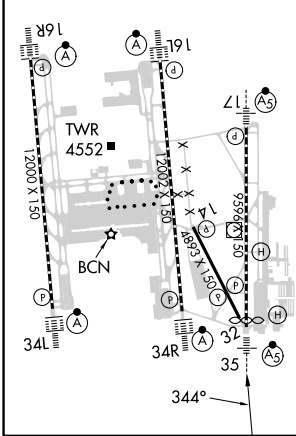


LDA/GLIDE SLOPE

Procedure NA for arrival on FFU VORTAC airway radials 310 CW 030.

ELEV 4231	D	TDZE 4227
-----------	----------	-----------

HIRL all Rwys
TDZ/CL Rwys 16L, 16R,
17, 35, 34L, and 34R



4800	9000	TCH	TCH	OGD	VGSI and LDA glidepath not coincident (VGSI Angle 3.00/TCH 74).	
		R-331				
I-UTJ DME ANT. FORXS I-UTJ 0.2		WEEL I-UTJ 1.8	KERNN I-UTJ 5.5	ZEPOG I-UTJ 14.6	PEDLE I-UTJ 17.8	HELMET I-UTJ 20.9
1.1 NM		0.9 NM	3.7 NM	9.1 NM	3.1 NM	3.1 NM
CATEGORY		A	B	C	D	E
S-LDA/GS 35		4477/24 250 (300-1/2)				
S-LDA 35		4660/24	433 (500-1/2)	4660/40	433 (500-3/4)	

SW-4, 11 JUL 2024 to 08 AUG 2024

SW-4, 11 JUL 2024 to 08 AUG 2024