

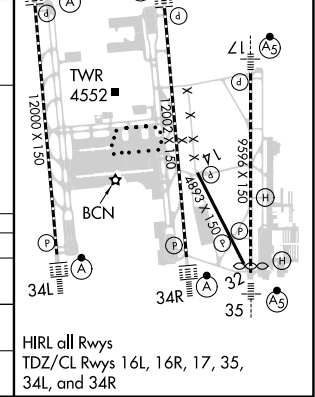
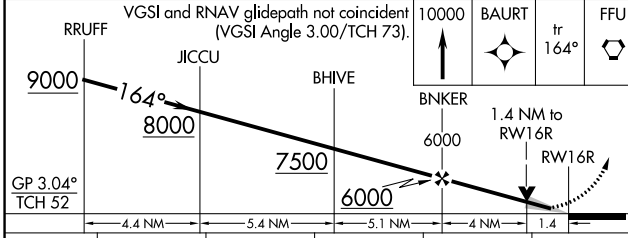
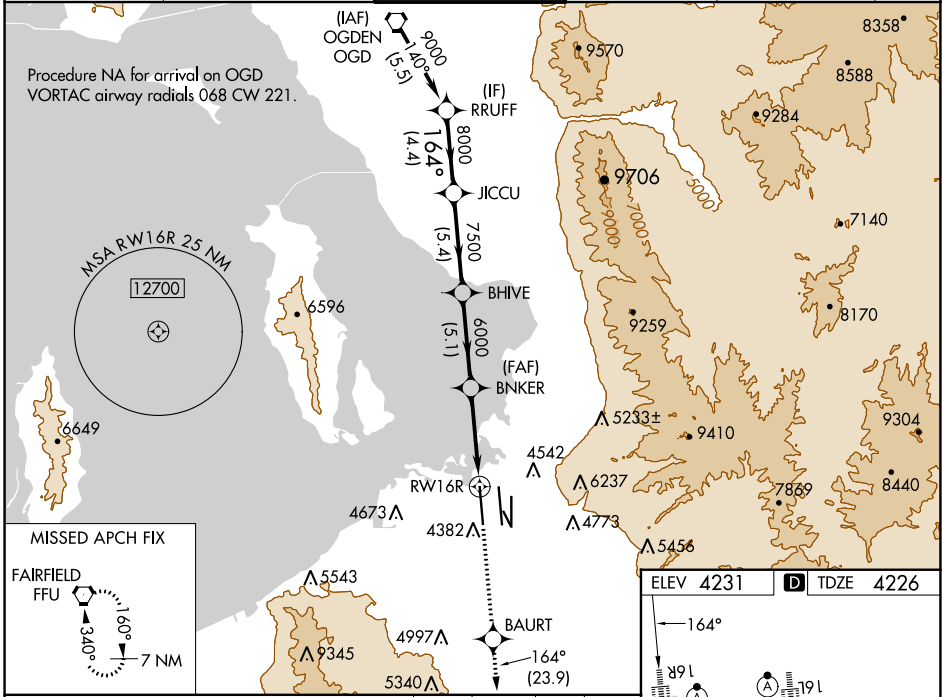
WAAS CH 42746 W16A	APP CRS 164°	Rwy Idg 12000 TDZE 4226 Apt Elev 4231
--	------------------------	--

RNAV (GPS) RWY 16R

SALT LAKE CITY INTL (SLC)

RNP APCH - GPS. Simultaneous approach authorized. LNAV procedure NA during simultaneous operations. Use of FD or AP required during simultaneous operations. For uncompensated Baro-VNAV systems, LNAV/VNAV NA below -10°C or above 46°C. For inop ALS, increase LPV Cat E visibility to RVR 4000, increase LNAV/VNAV Cat E visibility to RVR 6000, and increase LNAV Cat C/D/E visibility to 1½ SM.		ALSF-2 	MISSED APPROACH: Climb to 10000 direct BAURT and on track 164° to FFU VORTAC and hold.
--	--	-------------------	---

D-ATIS 124.75 125.625	SALT LAKE CITY APP CON 125.7 284.6	SALT LAKE CITY TOWER 132.65 336.4	GND CON 123.775 348.6	CLNC DEL 127.3 379.975	CPDLC
---------------------------------	--	---	---------------------------------	----------------------------------	-------



CATEGORY	A	B	C	D	E
LPV DA		4426/18	200 (200-½)		
LNAV/VNAV DA		4620/35	394 (400-¾)		
LNAV MDA	4740/24	514 (600-½)		4740/55	514 (600-1)

SW-4, 11 JUL 2024 to 08 AUG 2024

SW-4, 11 JUL 2024 to 08 AUG 2024